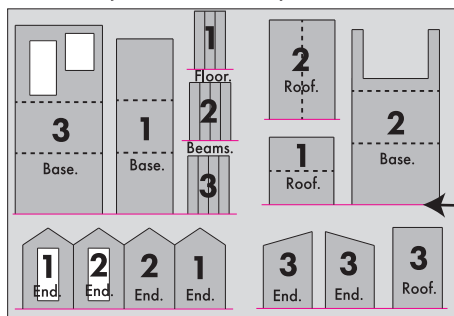


Contents:

- 1 x Printed card sheet (Components for SHEDS 1, 2, & 3).
- 1 x Grey card die cut with inner strengthening components.
- 2 x Instruction sheets (in the kit - there are three sheets online).
- 1 x Small plain sheet clear plastic - for windows.



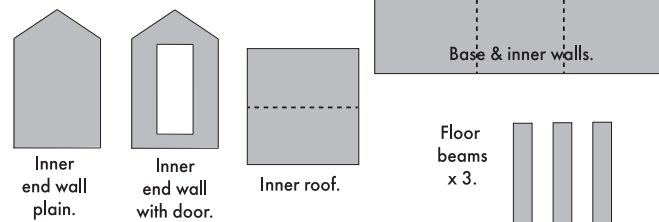
Grey card

Numbers indicate which shed each component is to be used for.

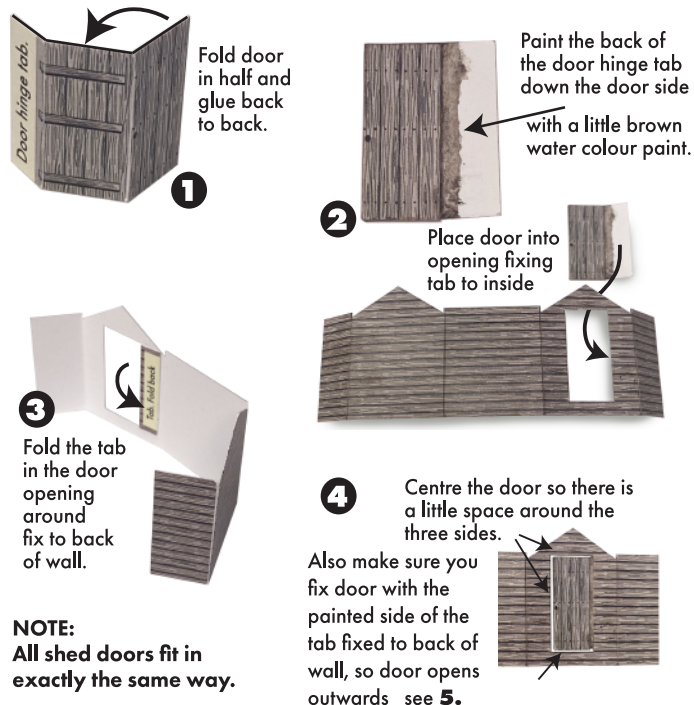
Cut score lines indicated here in red to detach.

Dotted lines indicate folds - don't cut.

From the Grey sheet extract:



Start with the door.



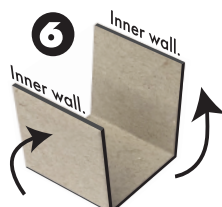
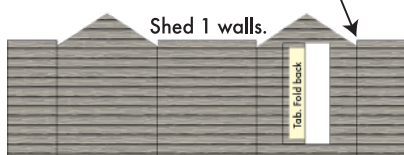
NOTE:
All shed doors fit in exactly the same way.

SHED 1. From the printed sheet carefully extract:

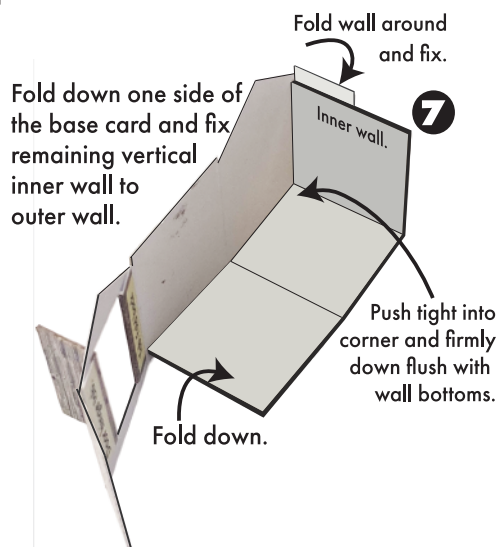
Door with hinge tab.



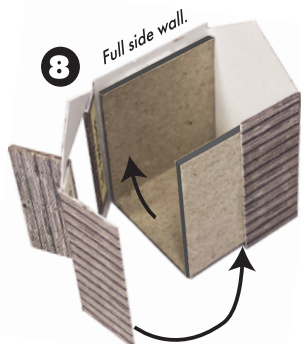
Extract by cutting along the score lines indicated with blue arrows. →
Note: The side walls stand a little taller than the end walls.
Take extra care when removing.



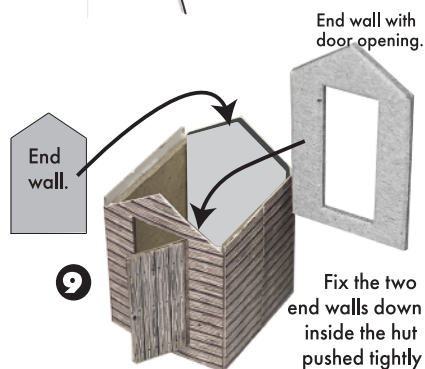
Fold the two sides of the base card up at right angles.



Fold the base back up and fix the full side wall to it.



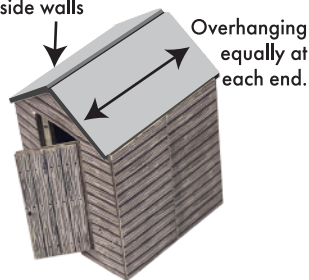
Fold walls around and fix the two half walls butt ended together. Make sure base card is pushed firmly down inside the shed flush to base of outer walls.



Note how the door opening is slightly smaller to allow the door to shut against it.

Instructions SHEET 2

Fit inner roof so it is sitting down inside the shed on top of the inner side walls



Overhanging equally at each end.

Fit the printed roof so it overhangs equally over the inner roof on all edges.



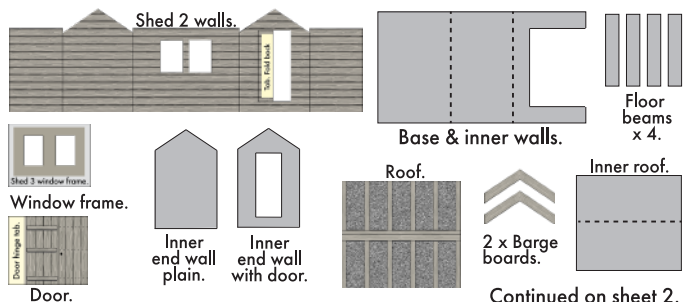
Then fit the barge boards up under the printed roof and against the edges of the inner roof.



Fix the three floor beams to the underside of the shed spaced equally.



SHED 2. You will need these components

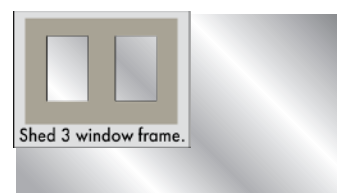


Continued on sheet 2.

SHED 2.

1

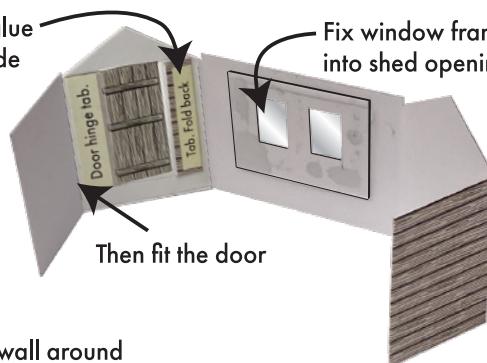
Fix the window frame onto the corner of the plastic sheet. When fast trim plastic to same size as frame.



2

Fold back and glue the tab at this side

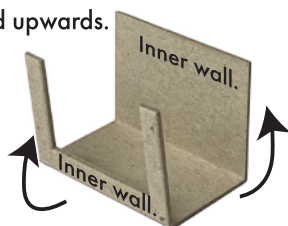
Fix window frame centred into shed openings.



Then fit the door

3

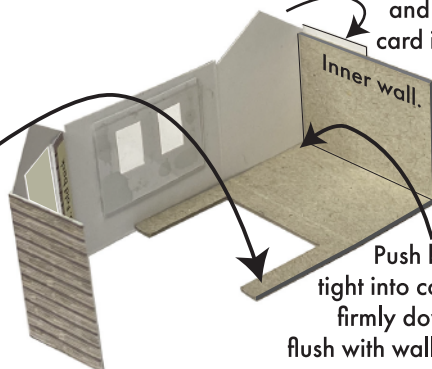
Fold inner walls of base card upwards.



4

Fold outer wall around and fix to base card inner wall.

Fold down this side of the base card.



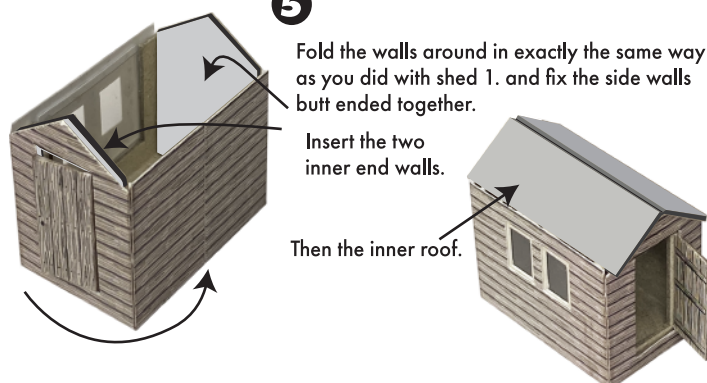
Push base card tight into corner and firmly down so it is flush with wall bottoms.

5

Fold the walls around in exactly the same way as you did with shed 1. and fix the side walls butt ended together.

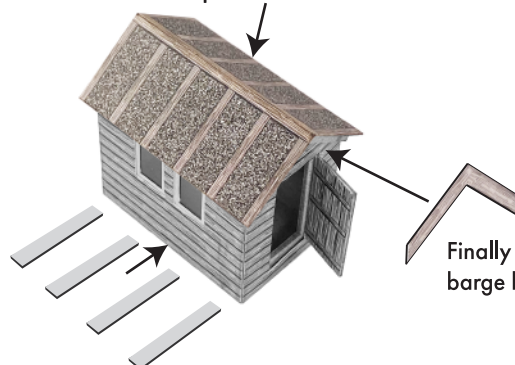
Insert the two inner end walls.

Then the inner roof.



Then the printed roof.

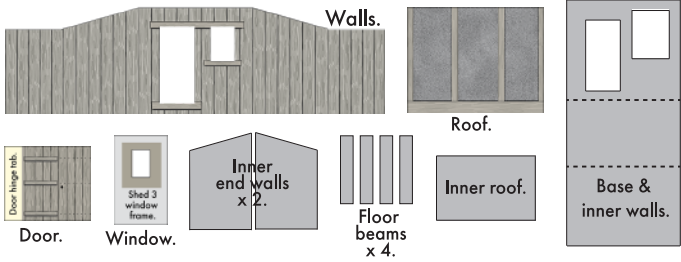
Fix the four floor beams underneath.



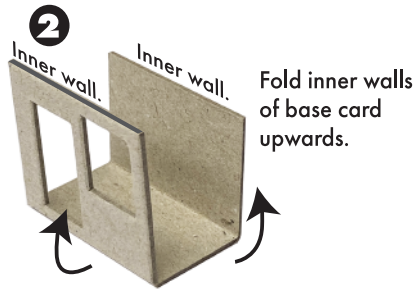
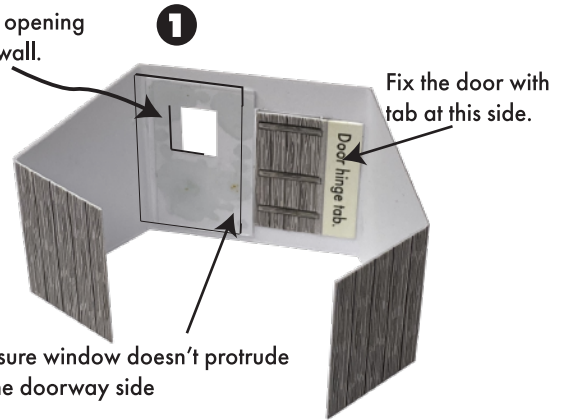
Finally the barge boards.

Instructions SHEET 3

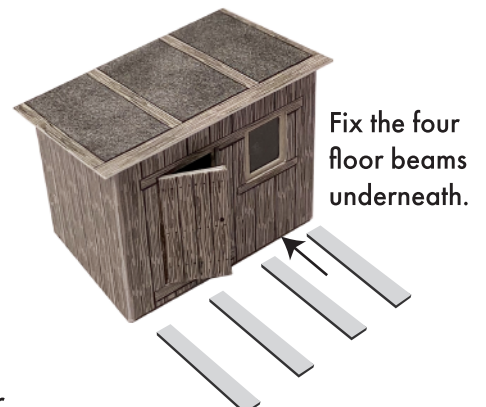
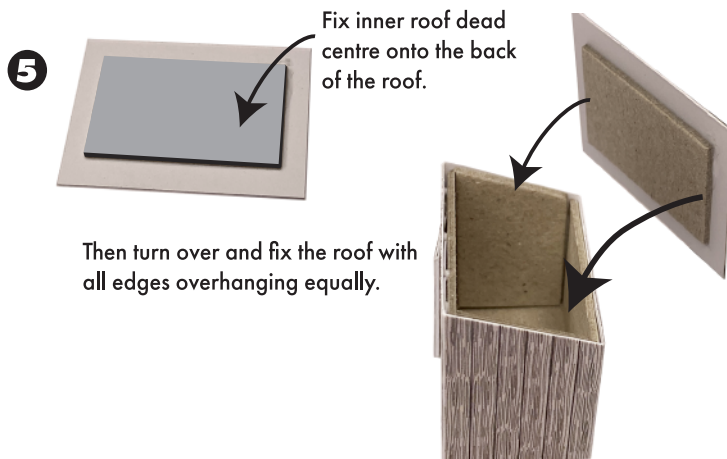
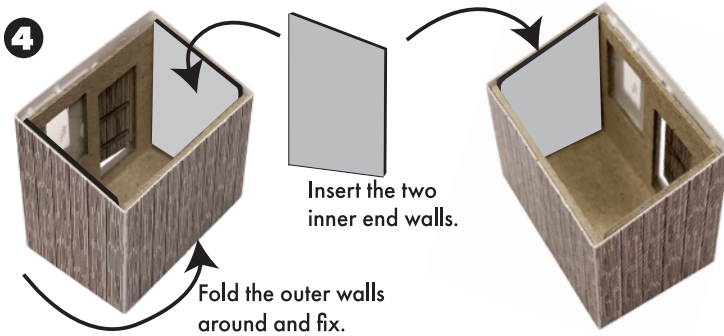
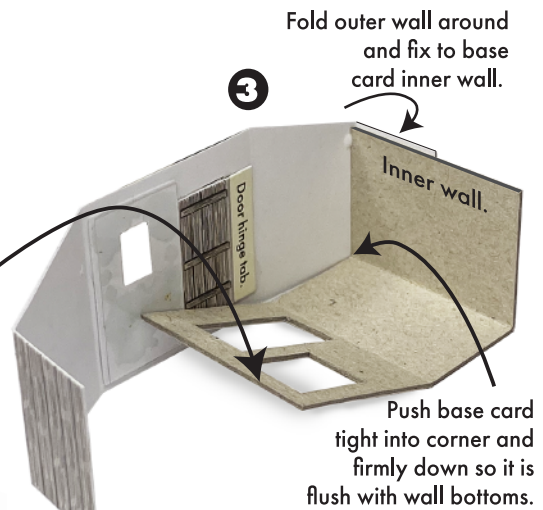
SHED 3. You will need these components



Fix glazing to back of window frame and fit to back of window opening in shed wall.



Fold down this side of the base card.



And that's your three sheds done!