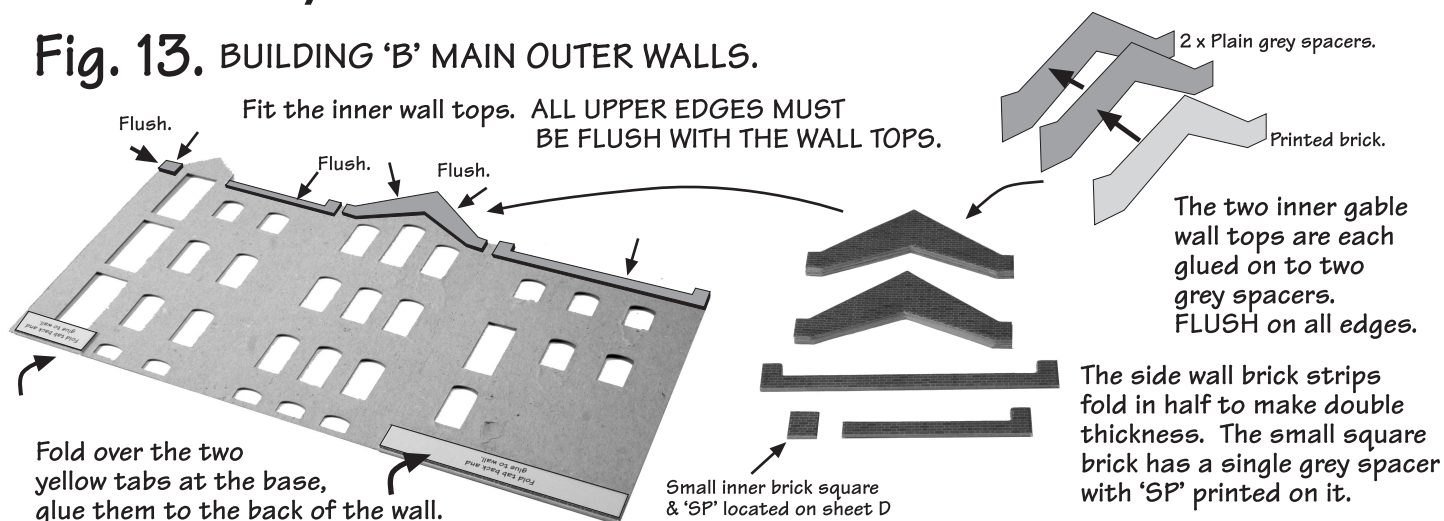


# PO283 00/HO SMALL FACTORY

## SHEET 2

**Fig. 13. BUILDING 'B' MAIN OUTER WALLS.**

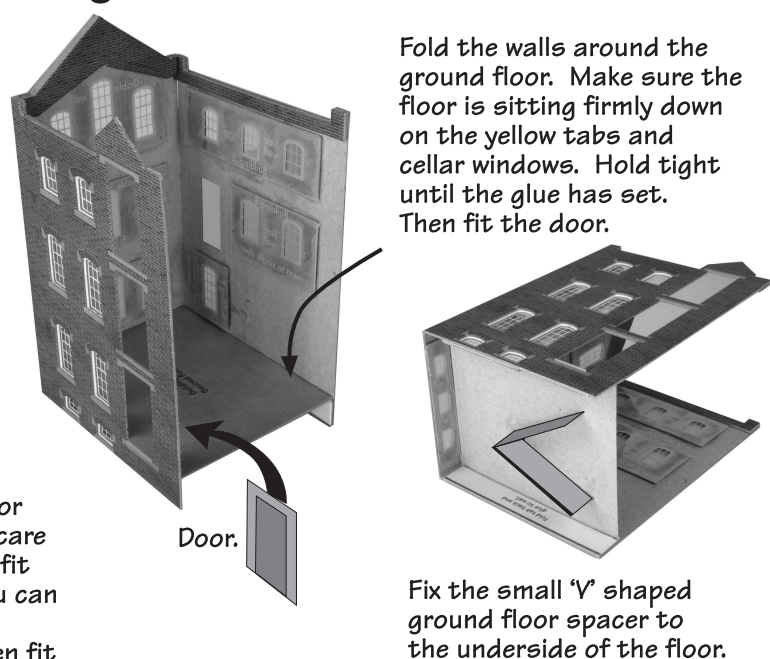


**Fig. 14. FIT THE WINDOWS.**

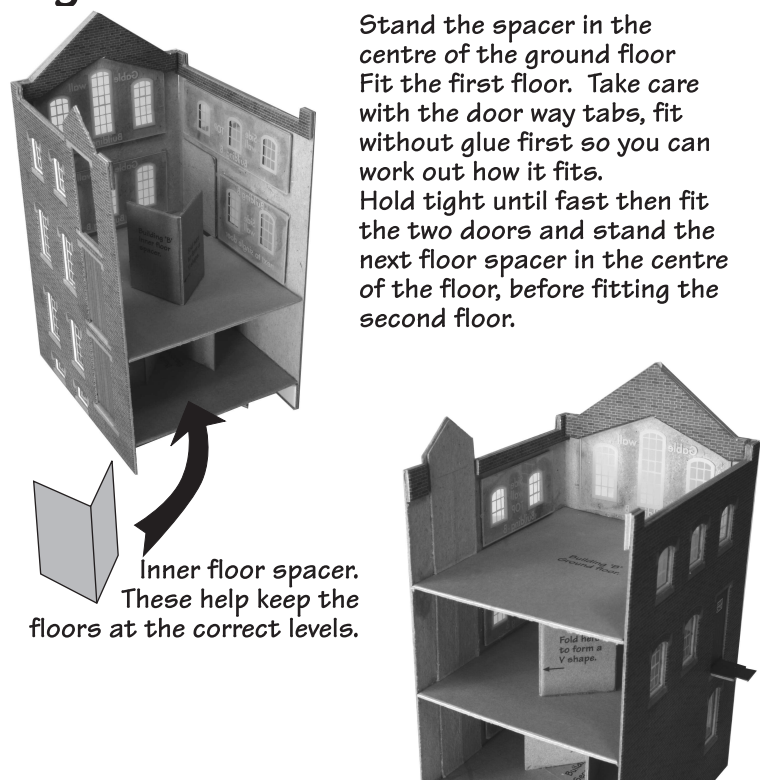
Fit each window unit to its matching opening. Test first before you glue.



**Fig. 15. GROUND FLOOR.**

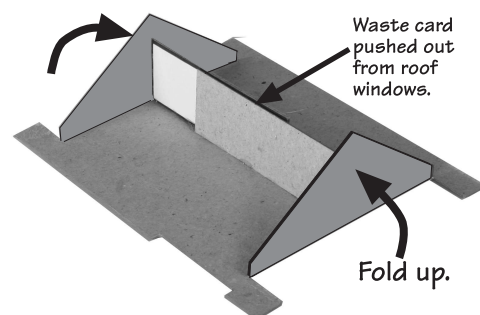


**Fig. 16. FIRST & SECOND FLOORS.**



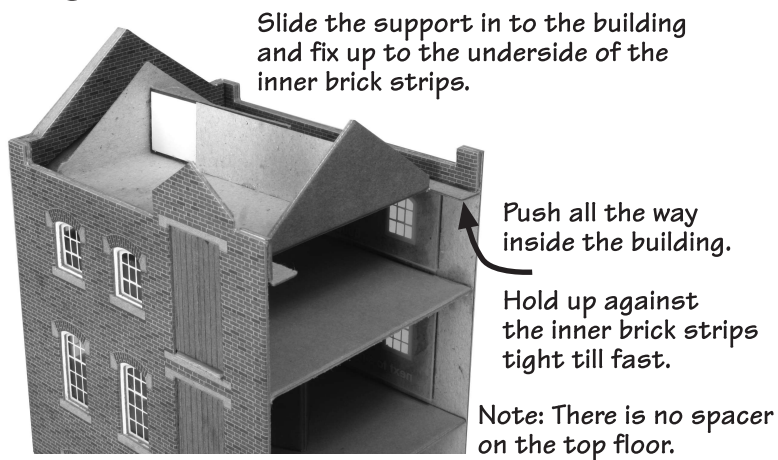
**Fig. 17. ROOF SUPPORT.**

Located on the plain grey card sheet. The two pointed ends fold up at rightangles. Hold in place with waste card

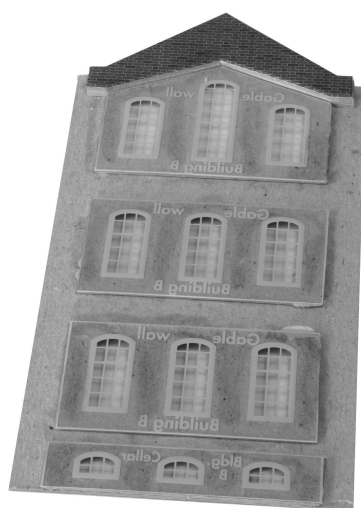


This is then slid into the building and fixed up to the undersides of the inner wall top strips.

**Fig. 18. FITTING THE ROOF SUPPORT.**



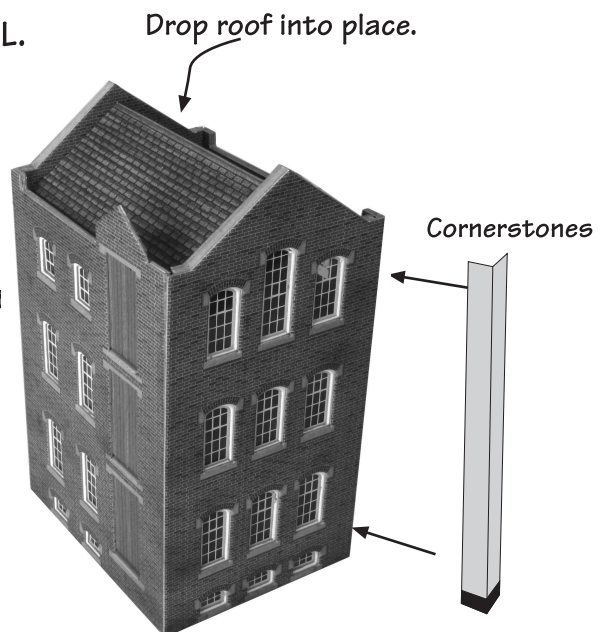
**Fig. 19. GABLE WALL.**



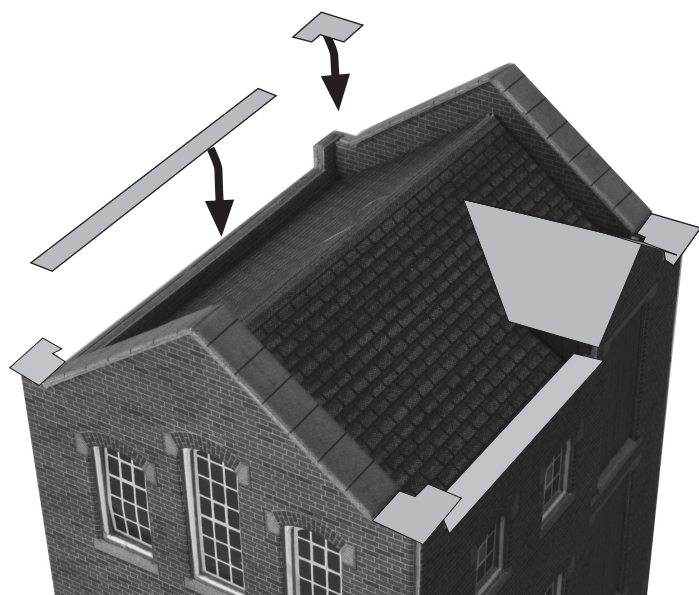
Fit the inner gable wall top (as in Fig. 13) then fit the windows.

Fix the gable wall to the end of the building then attach the four cornerstone strips.

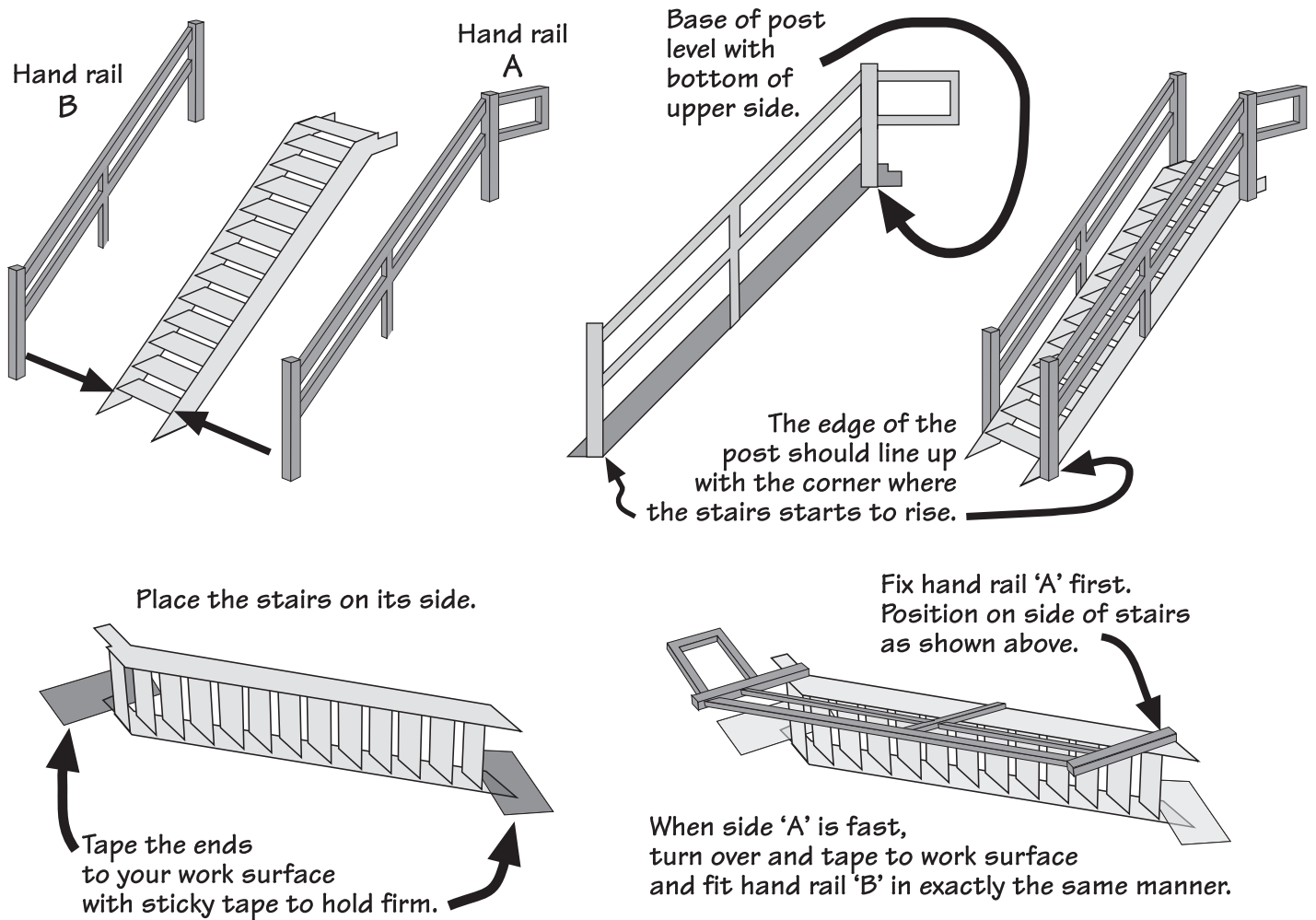
These nicely cover over the joints.



**Fig. 20. FIT COPING STONE STRIPS, CORNER CAPS AND SMALL WINCH HOUSE ROOF.**



**Fig. 21. PLASTIC STEPS.**



**PLEASE NOTE:** These steps are a universal set, designed for use with other kits too. You will only need to use handrail 'A' in this kit, unless you are customising the design.



## Fig. 22. FITTING THE STEPS.

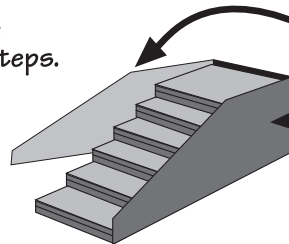
If you are fastening the two buildings together as shown here, the steps are designed to run from the platform height up to the outside entrance on the first floor. The top of the steps sit on top of the green landing that sticks out from the first floor doorway, the bottom runners sit on the platform.



Alternatively, if building 'B' is to be a stand alone unit, then you will need the extra brick steps to continue your stairs down to ground level.

These are easily made in the same way as the platform steps.

If you are not using them as shown here, they will always come in handy elsewhere.



### EXTRA STEPS.

Use the 6 x pink steps. When complete, wrap the pre-cut brick wall around the back and sides.

