

# PN923 Modern Day Platform Shelter INSTRUCTIONS

## PLEASE

Read through the instructions and familiarise yourself with the kit components before you start building.

### CHECK LIST

This kit should contain the following:

- 1 x Printed sheet of components.
- 1 x Sheet 'L1' Laser cut components.
- 1 x Glazing sheet.
- 1 x Instruction booklet (this one).

To construct this kit you will need the following:

- 1. A modellers knife.
- 2. A pair of sharp scissors.
- 3. A steel ruler.
- 4. Glue - See glues.
- 5. Ultra Fine Tip Glue Applicator, see below.
- 6. A cutting surface - a sheet of card or cutting mat will do.
- 7. Fine point tweezers.
- 8. Watercolour paints and fine brush.
- 9. Bulldog clips or clothes pegs are good for clamping whilst glue sets.

## Glue.

We recommend using a combination of glue:

**UHU** All Purpose solvent free.

This is the best glue for fixing the plastic glazing to the window frames located on sheet C.

**Speed Bond** is good for gluing card to card it is slightly slow drying, ideal for where a little positioning is required as you build.

Both glues work well in our Ultra Fine Tip Glue Applicators.



## Ultra Fine Tip Glue Applicators.

An absolute 'must' when building this kit. When used with **Speed Bond** or **UHU** perfect amounts of glue can be applied to very precise areas without any mess.

**Speed Bond** in an applicator was used to build most of this kit.

**UHU** for fixing the glazing.

A **METCALFE** product supplied in packs of 3. Product code **MT907**  
Glue not included



## Painting Corners and Edges.

Things like the ridge tiles and the corners of the brick walls are the only things that need any touching up in this kit. Simple water colour paints like these here are good.

When mixing colours water down a lot and only apply a small amount of paint at first. Too much can spoil the effect. Always test on waste card first.



## GETTING STARTED

To stop the components from falling off the printed sheet, they are held secure with score lines (marked with blue arrows) that cut about 75% of the way through the card. To release them carefully run the point of your knife along these scores and they will fall away.

First to do is push out all the window opening in-fills from the printed sheet.

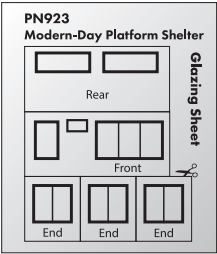


Then extract the Main Building.

All other components can be left on the base sheets until needed.

# Glazing sheet.

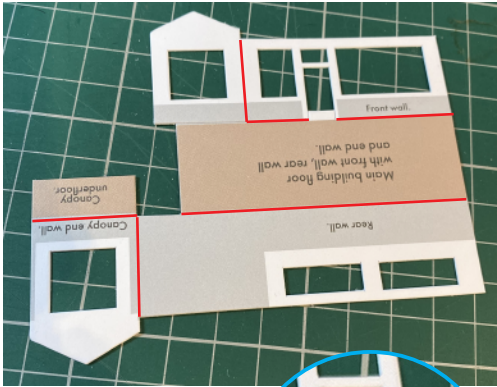
Cut out the five pieces of glazing as indicated. Each glazing is simply sandwiched between the inner walls which each have matching inward and outward facing layers.



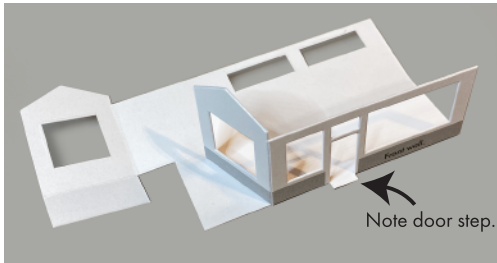
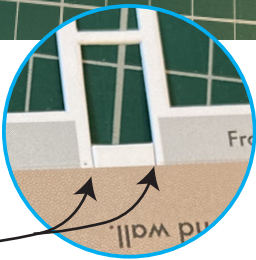
## 1 The Main Building.

Start by locating the five score lines that fold to form the building and carefully bend each one back fully to loosen them up.

Indicated below with **RED** lines

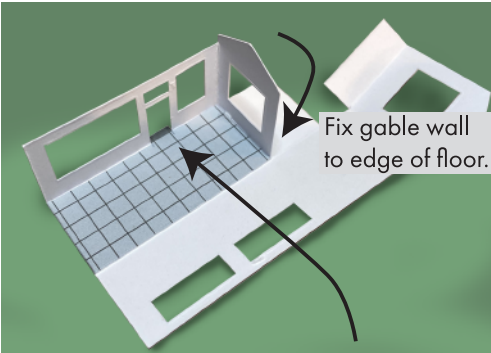


NOTE: The front door step may need a little cut to help it sit flat as the wall is folded up.

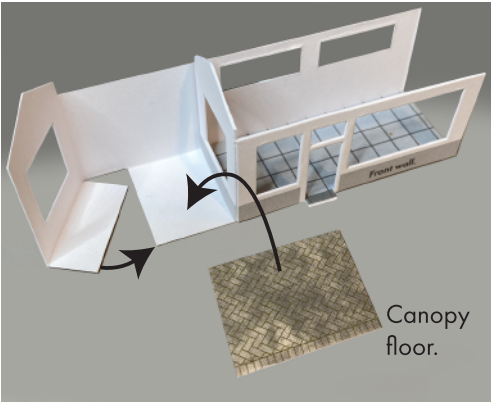


Fold the front wall up at right angle.

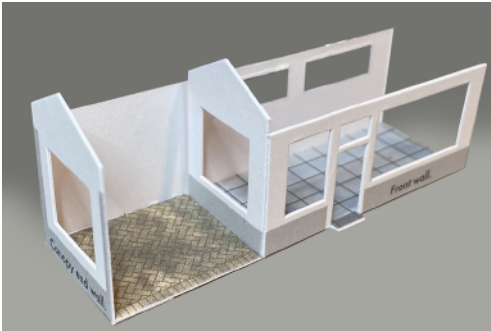
Fit the waiting room floor.



Push floor tight up to front wall with door step pushed through doorway.



Fold in the end gable and attach the canopy floor on top of the two floor tabs butt ended together.



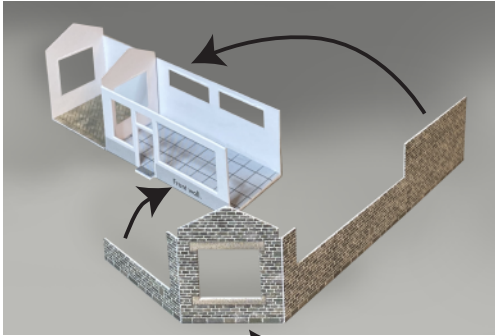
Like this.

## 2 Outer Stone/Brick Fascia.

Next it's decision time!

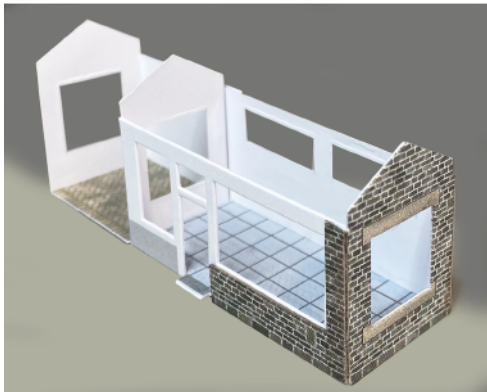
Brick or Stone?

You will have noticed that there are two identical sets of outer walls - W1. W2. & the main outer walls plus an end wall giving you a choice of brick or stone, see page 8. These walls wrap around the main building. Start with the large outer wall.



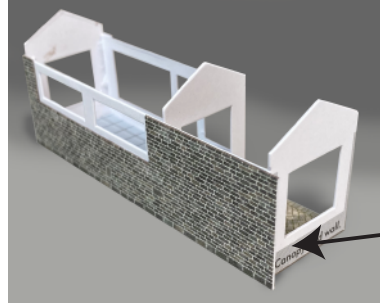
Gable wall doesn't need any glue on back of it.

Like this shown from the front.



Make sure all bottom edges are pushed down flush to the base.

Shown here viewed from the back.



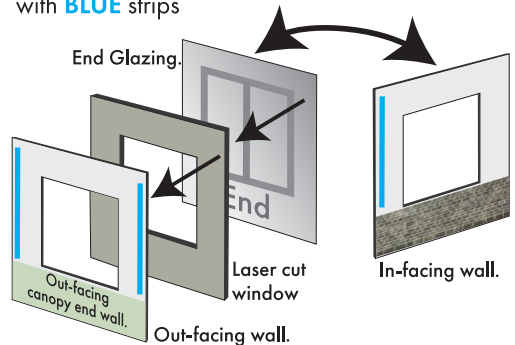
Note this edge protrudes past wall end.



Lay building on its back and trim excess card away flush to the edge of the gable wall.

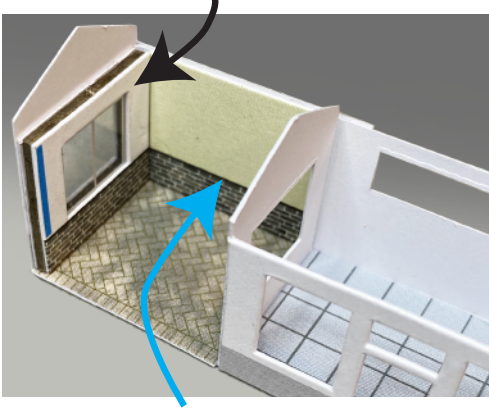
Before the outer end wall can be fitted, the inner walls need to be assembled and fitted to the inside of the gable wall.

The in-facing and out-facing walls are identified with **BLUE** strips



Push out the window opening from the laser cut card sheet **L1**. Now attach the glazing to the back of it so that the printed glazing sit centrally in the opening. Next fix the laser cut window to the back of the out-facing wall, all edges flush, then fix the in-facing wall to the back of the glazing.

Fix the window unit to back of end gable wall line up window opening.

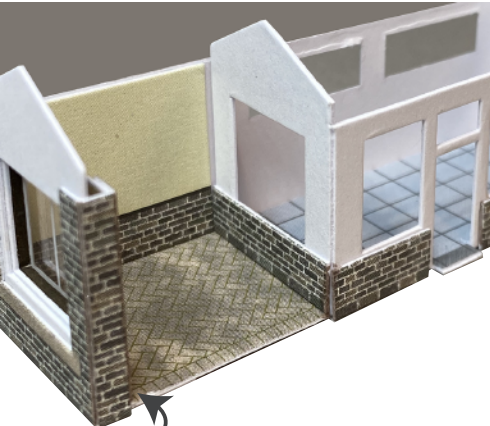


Also fit the in-facing canopy back wall.

### Outer end wall.

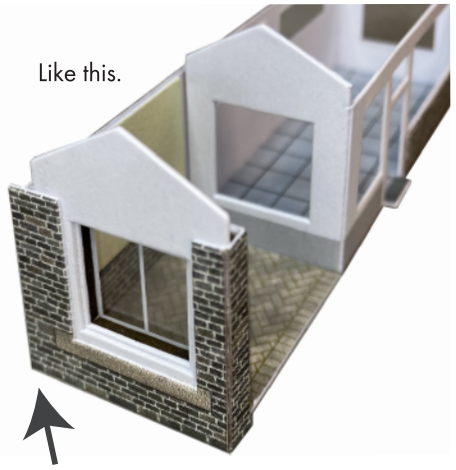


This has two scores that allow it to fold around the wall end. Locate them and fold them back (paint if necessary).



Fix to the end wall and fold the wall around wall end

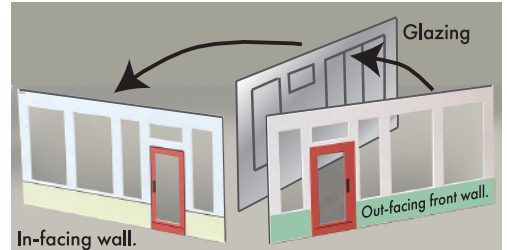
Like this.



This end of the wall protrudes past the corner. When fast trim overhang off as you did with the rear wall.

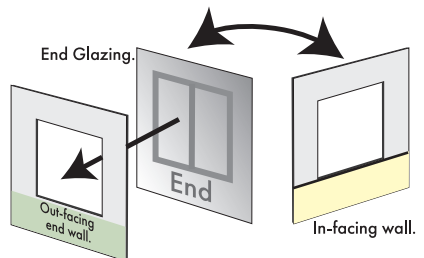
## 3 Inner walls.

Lets start with the front wall.



The in-facing and out-facing walls fit together back to back with the glazing sandwiched in between.

The two end walls fit together in exactly the same way with inner and outer walls back to back with glazing sandwiched in between.





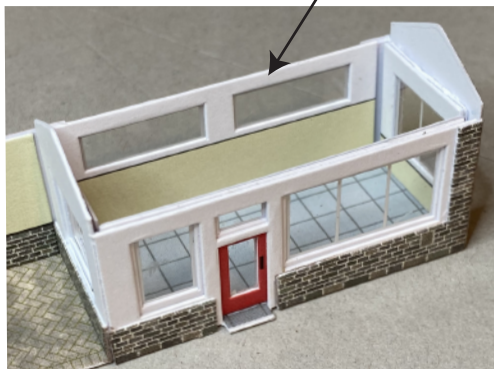
Fit the window unit inside the building with openings centred.



Front and rear inner wall tops should be flush with outer wall tops. Test first without glue and trim down a little if needed.

**In-fact, test all the inner walls without glue first to make sure they line up with the window openings and wall tops**

The rear wall only has one in-facing inner wall. First fit the glazing to the back of the outer rear wall with windows centred in the two window openings, then fix the inner wall to the back of the glazing.



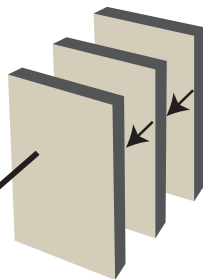
Shown here with all four inner walls fitted.

## 4 The Ticket Machine.

It's a good idea to make this now so it can be fitted in place before the roof goes on.

Take the three small oblong spacers from the laser sheet L1.

Glue them together to form a solid block

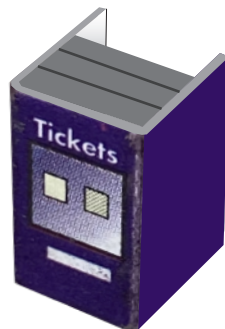


Keep all edges flush and squared up

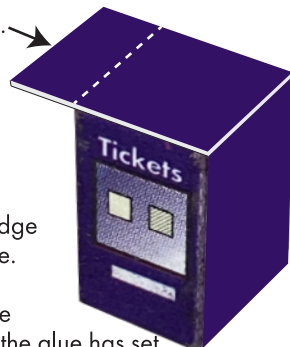


Bend sides of ticket machine back and paint the white of the scores to cover up.

Fix the spacer block inside the machine. It is slightly shorter so line the block up with the top edges.



Trim off overhang.



Fasten the top on flush to the front edge and one side edge.

the overhang to be trimmed off when the glue has set.

Carefully pain any white edges still showing and fit into place in the canopy area.

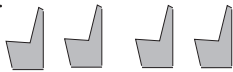
## 5 Benches.

Another little finishing touch that can be fitted inside the waiting room.

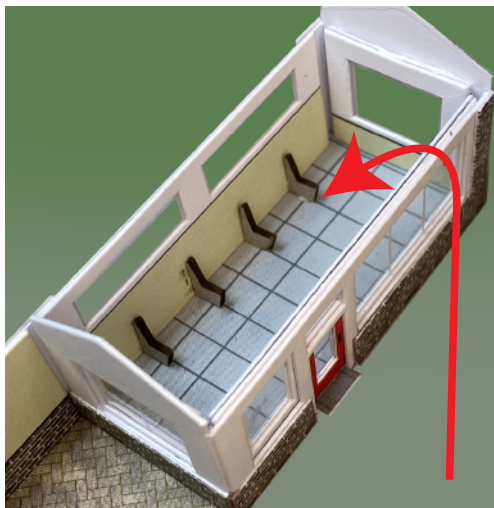
Carefully pop out the tiny bench

supports from Laser sheet L1.

Also extract the four red strips that make the bench seats and backs.



Hold the support with tweezers and very carefully place tiny spots of glue on the back and the base.



Fix them down inside the waiting room to the floor and against the rear wall.

Space them out on every other line between the floor tiles.

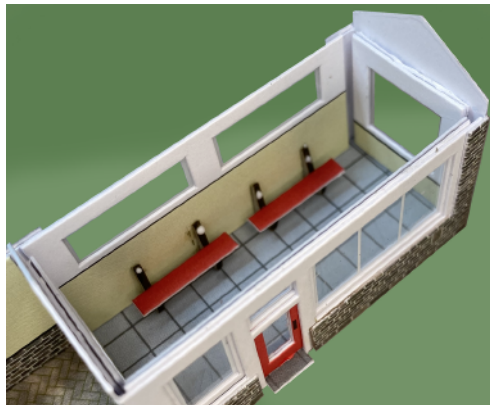
This a job that requires patience and a steady hand. Let glue set before fixing the red seats and backs.

Fix the red strips of card.

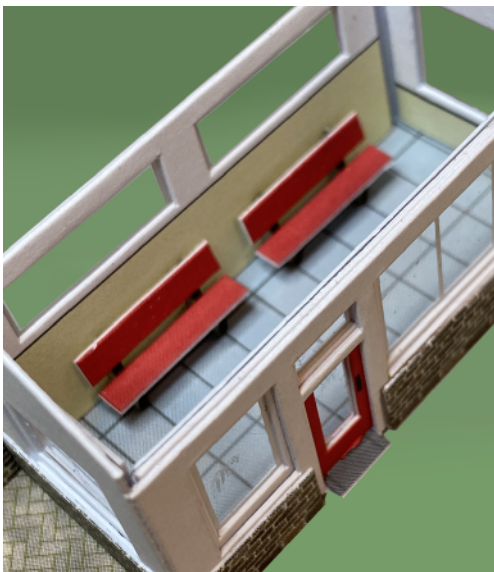
Fix the base/seat sections first.

Place tiny spots of glue on the supports then lift each seat into place gently stuck to the point of your knife.

Carefully move into position, then use the end of your tweezers to hold it in place as you pull the knife away



Once fast, repeat the process with the seat backs. Another tricky job but well worth giving it a go!



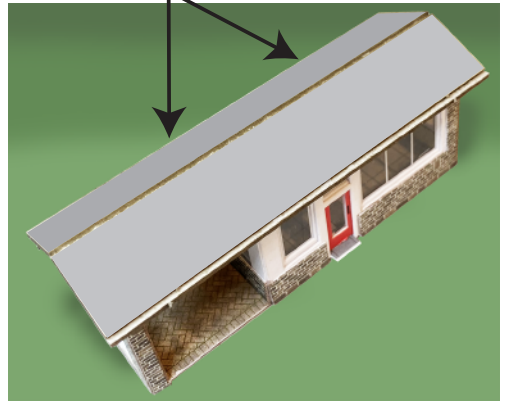
## 6 The Roof.

The flat ceiling card is located on laser sheet **L1**.

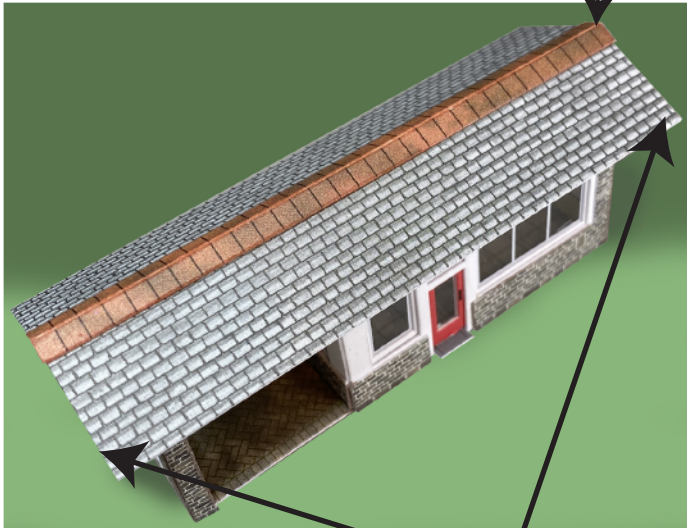


It fits directly on top of the front and rear walls with the gabled sections poking through the various cut away portions.

The inner roof also located on Laser sheet **L1**. sits directly on the gables with the sides fixed on to the ceiling card front and back edges.



Fit the roof over the grey inner structure.



Ridge tile strip.

Fit the ridge tile strip. It will need the long score line loosening up by running the point of your knife along it.

Fold fully in half along the score line and paint the white edges with a little water colour paint.

Roof must overhang equally at each end.

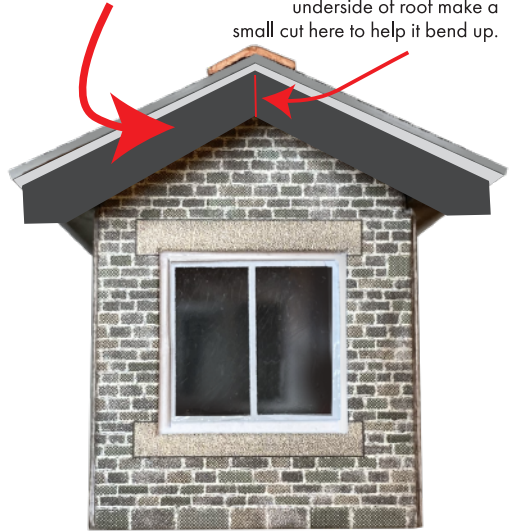
## 7 The Barge Boards.

The two inner barge boards are located on Laser sheet L1.



The printed barge boards then fit on top of the grey inner boards.

If it doesn't fit tight up to underside of roof make a small cut here to help it bend up.



They fit directly on to the ends of the inner roof pushed up against the underside of the printed roof.



Stone or red brick styles.

