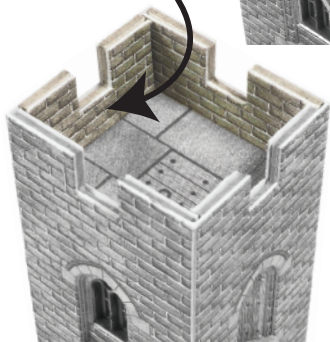
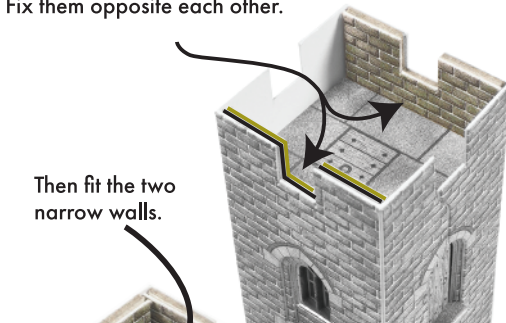


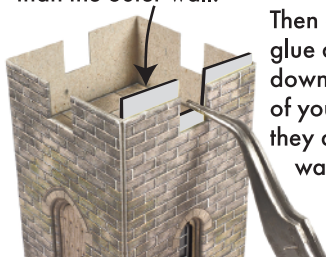
Fit the two wider inner battlements first.
Fix them opposite each other.

Then fit the two
narrow walls.



When fitting the inner walls to the battlements,
always fit them just a little higher
than the outer wall.

Then quickly before the
glue dries slide them
down using the point
of your tweezers until
they are level with the
wall tops.



Test without glue first. You may need to trim a
little off the bottom edges to get tops level.

10 Roof top and Battlements.

Crenel Top Stones.

Shaped like this and
located on Laser
sheet L1.

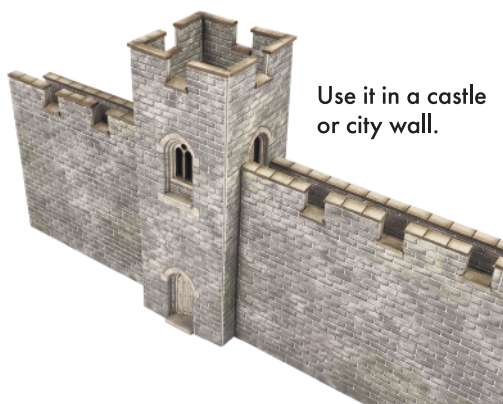
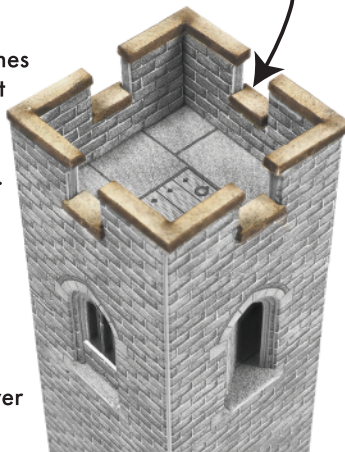


Place a tiny spot of
glue on the bottom of the crenel and lift the
top stone into the opening at an angle
with your tweezers.

Then with the end of your tweezers push the
top stone down level and into place.

Carefully push
out the four 'L'
shaped top stones
from laser sheet
L1. and fit to
the wall tops
on each corner.

That's your tower
finished



Or add to the
Castle Hall to
make a fortified
country house.



Seen here with 1 x Castle Hall
2 x 45° Curtain walls and
2 x watch Towers.

Castles

ASSEMBLY INSTRUCTIONS for PN192

Watch Towers



PLEASE - PAY ATTENTION

Read through the instructions before you start.
You must follow these step by step instructions
carefully to make this wonderfully detailed kit.

1 Tools to build this kit.

To build this kit you will need a few basic tools:

1. A modellers knife.
2. A cutting surface - A cutting mat or a sheet of thick card will do.
3. A sharp pair of scissors
4. A steel ruler.
5. Fine point tweezers.
6. METCALFE Fine Tip Glue Bottles (see 3)

2 Glue.

We recommend using **Speed Bond**.

Made by Deluxe Materials -

www.deluxematerials.com

This is a good all round glue that works very
well in our Ultra Fine Tip Glue Applicators.

UHU Solvent Free All Purpose Adhesive
is also good.



3 Ultra Fine Tip Glue Applicators.

An absolute 'must' when building this kit.
When used with Speed Bond or UHU perfect
amounts of glue can be applied to very precise
areas without any mess.



A METCALFE product
supplied in packs of 3
Product code MT907
Glue not included

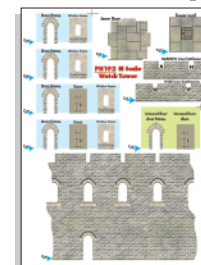


4 Extracting components from base sheets.

To stop components falling off the base sheets,
they are held secure with score lines (marked
with blue arrows) → that cut about 75% of
the way through the card.

To release them run the point of your knife along
these score lines and they will come seamlessly
away. **WARNING**, Cut with care to reduce the
risk of the blade running out of the score and
cutting the component.

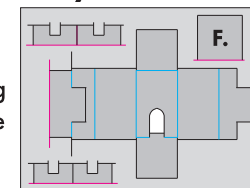
5 Kit components.



Printed Sheet.

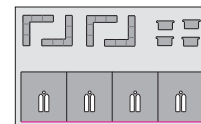
Each half of the sheet
contains all the printed
components for one
tower.

Grey Card Sheet.



Inner strengthening
components for the
towers x 2 sets.

Laser sheet L1.



Capping stones for wall
tops, 4 x large window
frames, for each tower.

Glazing sheet. Clear plastic windows
to fit the laser cut frames shown above.

6 Technical Stuff.

Castle Wall Terminology.
Just so you know.



7 Inner Support Walls.

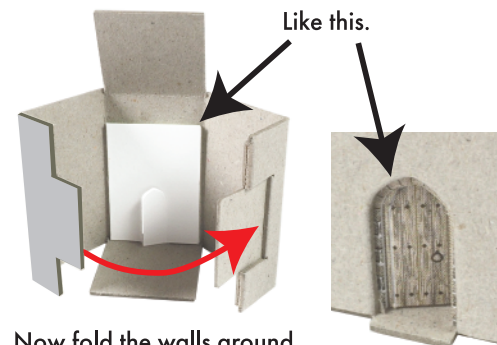
From **Grey Sheet**. Extract the Inner support.



Glue it back like this.



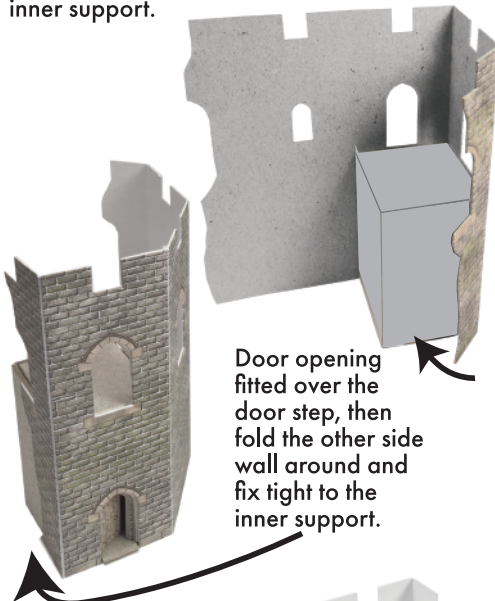
Then fit door to back of the door opening in the inner support.



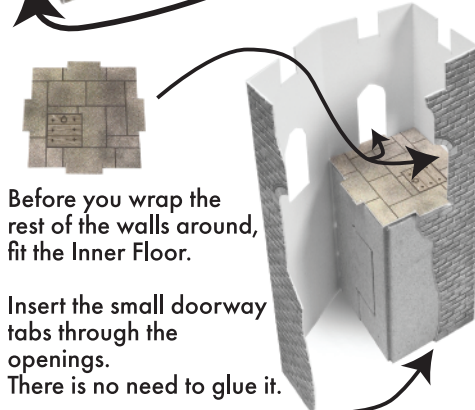
Now fold the walls around and fix the tab on the right side into the matching slot on the left hand side.

8 Outer Walls.

From the **Printed Sheet**. Extract tower walls. These walls wrap all the way around the inner support.



Door opening fitted over the door step, then fold the other side wall around and fix tight to the inner support.



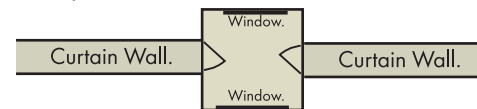
Insert the small doorway tabs through the openings. There is no need to glue it.

Now fold the rest of the walls around and fit tight against each other where they join. Keep all bottom edges flat to your work surface.

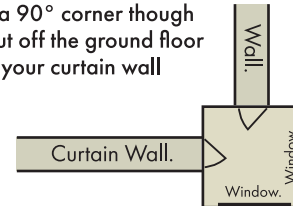
9 Doors & Windows.

Now it's time to decide where you want the doors and windows.

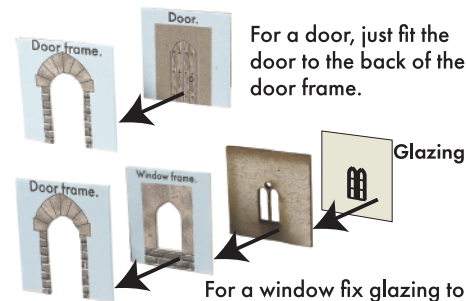
These plans show how.



If you are turning a 90° corner though you will need to cut off the ground floor doorstep to allow your curtain wall to fit flush over the doorway.

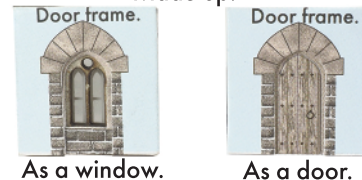


If your tower is simply at the end of a wall then there is an extra window and frame to have three windows and one door, or use all four windows if it is just a stand alone tower or folly.



For a window fix glazing to back of laser cut frame, then to back of printed window frame then on to back of door frame.

Made up.



Like this.



Lower your windows into the tower using fingers or tweezers. Position sideways in the openings and then push down tight against the floor.



It is important the doors and windows are pushed down to the floor as the top floor (roof) sits directly on top of them.

10 Roof top and Battlements.

Drop the grey floor marked 'F' on grey sheet down inside the tower so it sits on top of the doors and windows.



Inner Battlement walls.

Each inner battlement has a corresponding grey card spacer that is attached to the back.

There are two WIDE and two NARROW battlements.

Match each up with their spacers as shown. Fit the wider ones first, see over.

