

PO373 OO Scale Low Relief Town House INSTRUCTIONS

PLEASE - PAY ATTENTION
Carefully read through all the instructions to familiarise yourself with the kit and the components before you start to build.

COMPONENT CHECK LIST

This kit should contain the following:

- 1 x PRINTED SHEET - Main components
- 1 x GREY CARD SHEET - Inner Supports.
- 1 x GLAZING SHEET - Windows
- 1 x INSTRUCTION BOOKLET.

PRE-BUILD PREPARATIONS

Tools you'll need to build this kit

(all of which are available on our website: www.metcalfe-models.com)

1. A modellers knife
2. A cutting mat
3. A steel ruler
4. A pair of fine pointed tweezers
5. Water colour paint set
6. Metcalfe ultra fine tipped glue applicator
7. Glue (see below)

Glues

We recommend using a combination of two types of glue, Speed bond and Rokat card glue, both are produced by Deluxe materials.

Rokat card glue is an instant, fast drying glue which is great quickly securing components that require little positioning. It also comes with it's own fine tip applicator.


Speed Bond is a slightly slower drying glue which is ideal for the components where careful positioning is required.

UHU solvent free is also a great all round glue again ideal for the components where careful positioning is required.

Metcalfe ultra fine tipped glue applicator is essential for applying small amounts of glue to the smaller components. These bottles come in a pack of 3 and are best used with Speed Bond and UHU, simply unscrew the top and fill with the glue.



Extracting the components from the base sheets

To prevent the components from falling off the sheets they are held secure with scorelines, marked with a  These are cuts that only go about 75% of the way through the card. To release them carefully run the point of your knife along these scorelines and they will come seamlessly away, be very careful your blade does not run off the score and damage the components. Use a steel ruler as a guide especially if using a new sharp blade. Keep the components organised and away from your work area on a piece of card or tray that we will call your builders yard.



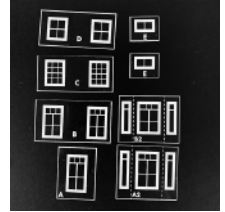
Painting the exposed edges

This brickwork doesn't really need the edges painting but you may find that some exposed edges, undersides and folds of the roof sections or wall ends may need to be coloured to match the printed surface. Use some water paints, mix the colour with lots and lots of water, test against the leftover bleed on the base sheet to get the correct shade and colour. The card only has to be tinted, as a solid painted line will make it look worse. Quickly wipe away any excess paint off the printed surface before it dries.



Windows

Carefully cut out the windows along the outer white line from the glazing sheet, organise and place on a dark piece of card (so that you can see them and they don't get lost) and place within your builders yard until required. The windows A2 & B2 have a dashed line, this needs to be carefully scored so that the end windows can be bent back roughly 45 degrees from the central, main window.



Strengtheners

The thick, unprinted grey sheet of card holds components that strengthen the interior of the kit. Below is a key to each of parts with an abbreviated code, this code will be referenced in the instructions.

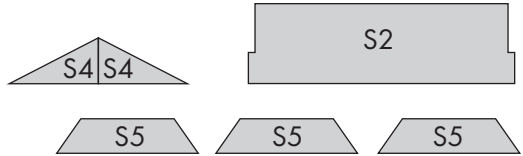
S1 - Side supports (x2)

S2 - Floors (x3)

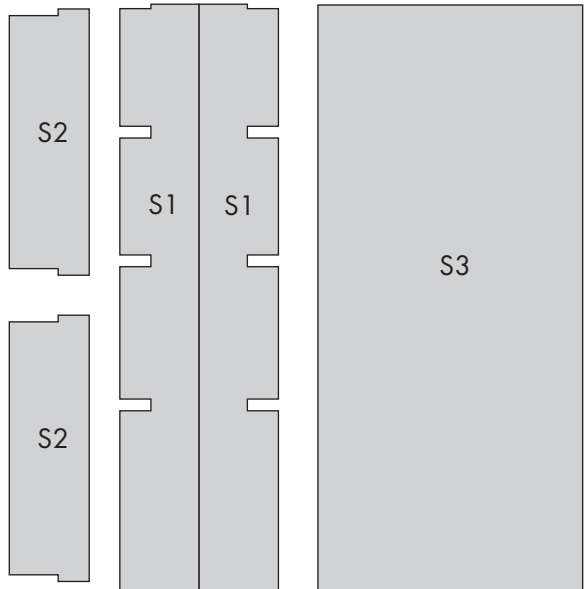
S3 - House back

S4 - Roof supports (x2)

S5 - Bay window formers (x3)



None of these parts will be visible when the build is complete so feel free to write the code numbers on the parts for easier reference.

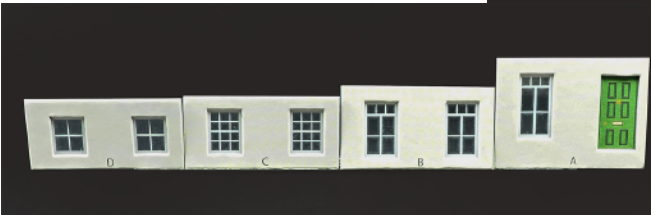


LET'S START TO BUILD!

1 Window & Door Frames

Start off by matching the windows to the corresponding window frames A to D. Also add a door of your choice to Frame A keeping the side, top and bottom edges flush with the frame.

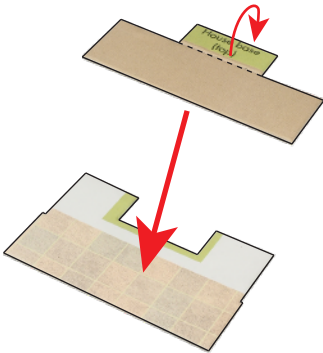
If you'd like to add curtains to the windows do this now. See fig. 10, page 10



Like so.

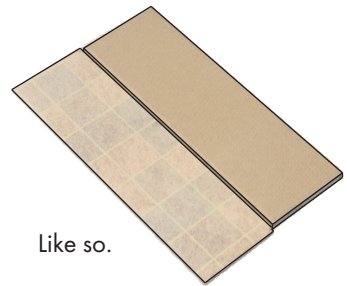
Place the completed windows back into the builders yard for the time being.

2 House Base & Walls



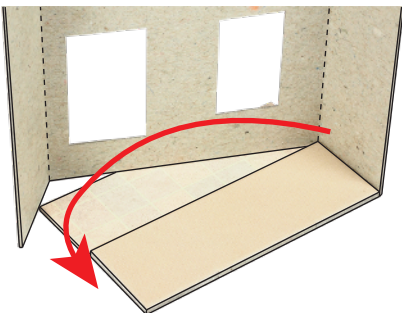
Fold back and glue the green tab on the House base (top)

Then using the green tab as a guide, fit into the green outlined slot in the House base (bottom), keeping the side and rear edges flush.

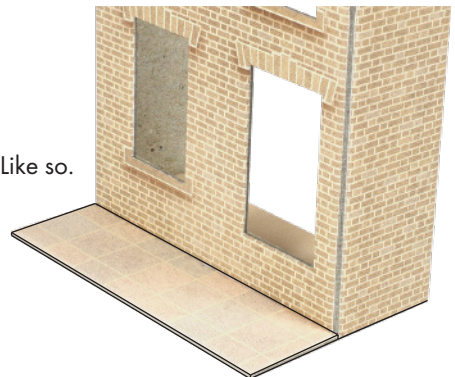


Like so.

Now add the Main walls. The longer side walls fit flush to the side of the base with the front fitting at top the paved part of the base and against the plain brown section.



Like so.



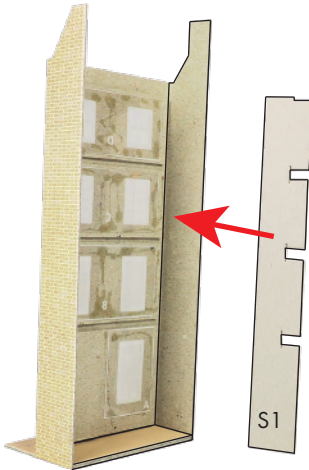
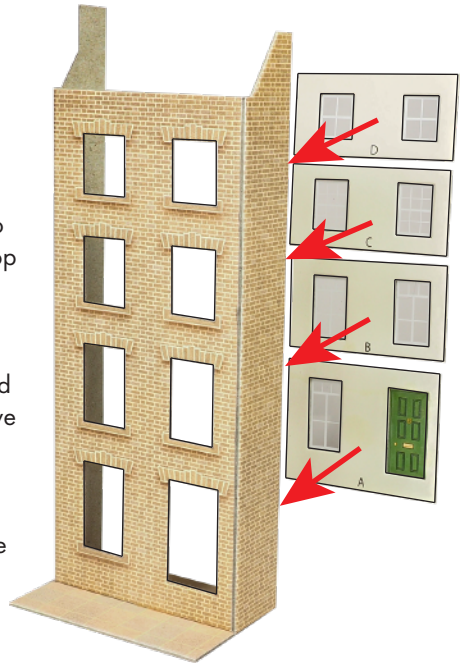
3 Frames & Internal Strengthening

Starting with window frame 'A' carefully align and position the door and window centrally through the openings on the Main walls. This will leave an even 1 mm of the window frame showing through the openings. Note the base of the door frame is flush to the door opening on the main walls, the sides and top with the 1 mm frame showing.



Work your way upwards with B, C and D frames. You will have an approximate 2mm gap between each frame on the inside of the walls. This is where the S2 strengtheners will slot into later on.

Like so.

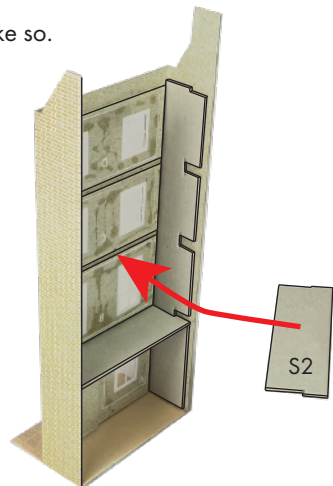


Now fix the side supports (S1) to the inside walls, tight into the corner and flush to the base.



The short notched edge is the top of the support. Repeat on the opposite inner wall.

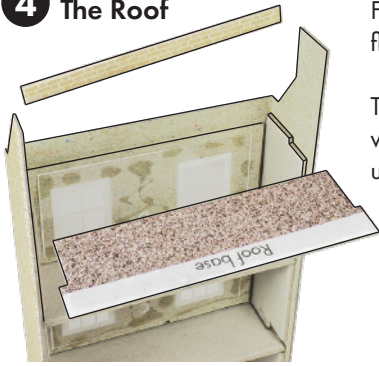
Like so.



Next add the three floors (S2) these slot into the side supports and fit flush between the inner window frames.

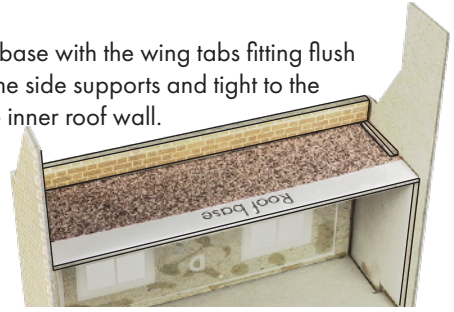
Start at the bottom and work your way upwards.

4 The Roof

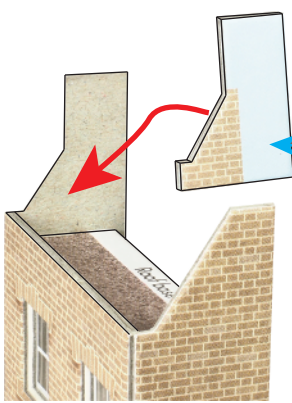


First glue the inside roof wall keeping the top edge flush with the main wall.

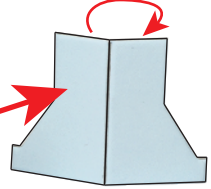
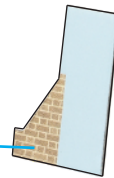
Then fit the roof base with the wing tabs fitting flush with the top of the side supports and tight to the underside of the inner roof wall.



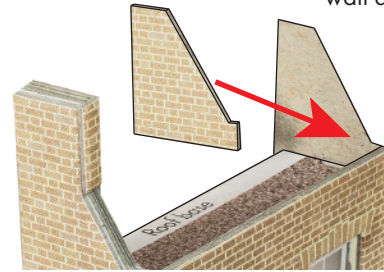
Fold the chimney formers back and glue to create double thickness



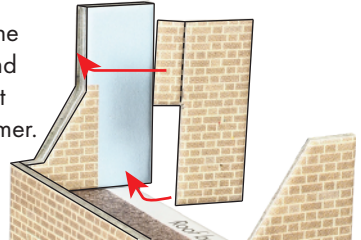
Then add the Chimney side to the former, all edges flush.



Add the 3 card thick former to the inside of the main wall. Again keeping all the exposed edges flush.



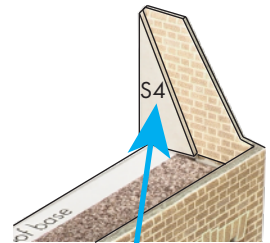
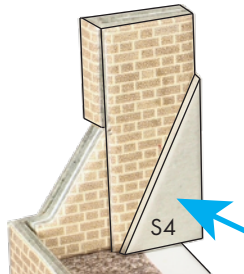
To complete the chimney, add the chimney stack. Keep the rear and top edges flush and fold the front wall around the edge of the former.



On the opposite side, add the inner roof wall again with the exposed edges flush.

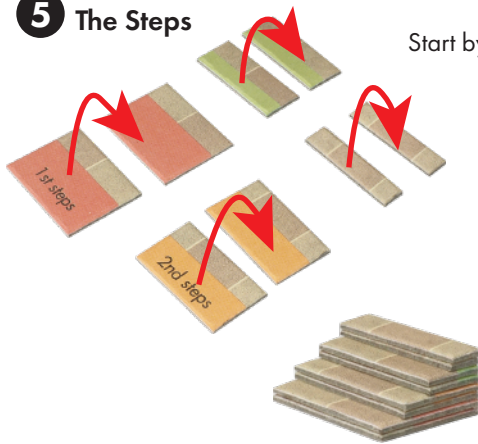


Finally add the roof, flush to the two roof supports.



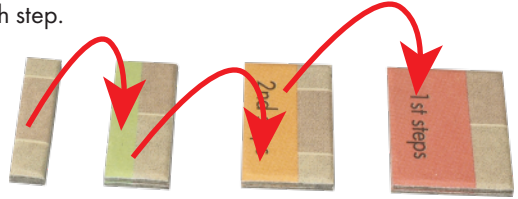
Then add the two roof supports (S4) to both sides keeping the rear edges flush.

5 The Steps



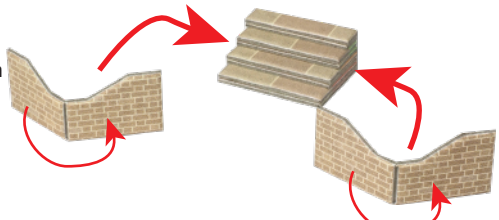
Start by pairing up the steps, glue together with all edges flush.

Then glue the steps together, start at the bottom with the red first step, add the orange 2nd keeping the side and rear edges flush, and work your way up to the smallest 4th step.



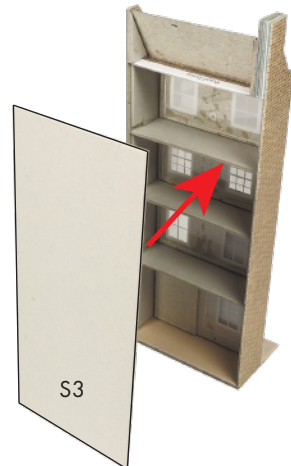
Like so.

Now fold back and glue the two step side walls to create double thickness and glue flush to the sides of the steps, keeping the base and rear edges flush.



Then fit the completed steps to the main walls, centred under the door and flush with the side wall and base.

The House back (S3) fits flush against the inner side wall supports and floors.

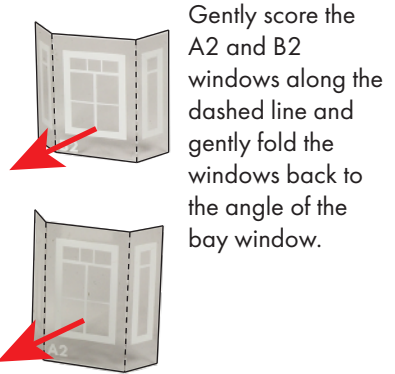
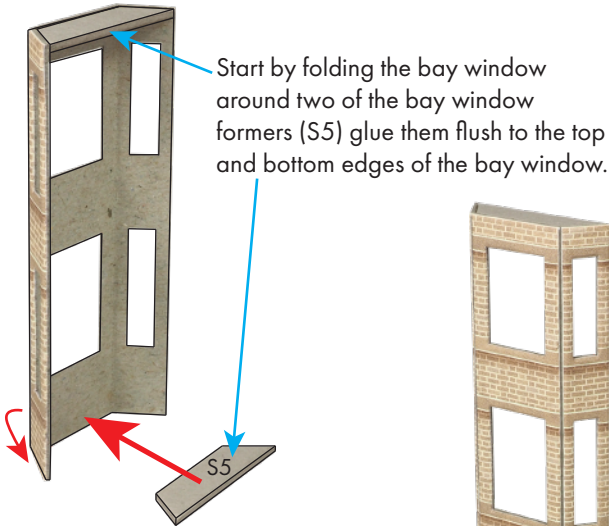


Advisory Note:

If you're building a row of these house fronts, then now is a good time to put this build to one side and work on the next. As the front walls and wall capping is easier to add when you have your completed row. Also some of the finishing touches do vary if you have some of the optional build extras such as the dormer and bay windows, so it's best to plan now how you want your row to look before adding the final details.

6 Bay Window

Check the fold on the bay window first, make sure they easily and evenly fold back, if needed carefully run your knife along the scoreline to make the fold easier.

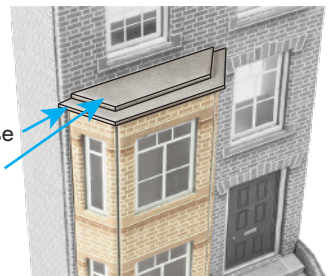


Carefully align the A2 and B2 windows to the inside of the bay window. Check the fit first then glue into place.

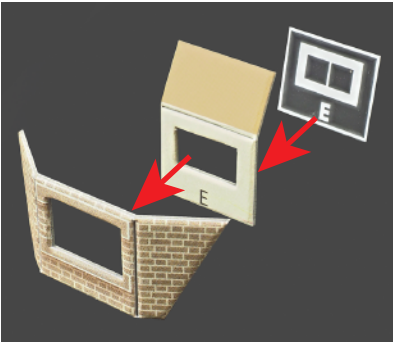


Cut out and add a bay window back (see page 11) then glue to the main wall, keep the right side of the bay window flush to the step wall.

Add the Bay window roof base then the bay window roof top to complete.



7 Dormer Window



Align window E to the dormer frame, then the frame to dormer window.

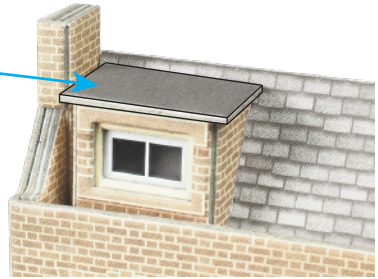
Fold back the orange tab 90 degrees.

Fold round the side walls and glue flush to the orange tab.



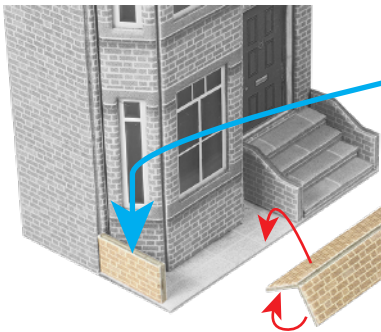
Like so.

Position on the roof, then add the dormer roof.



Please note that the ridge tiles will need to be trimmed to fit flush with the roof edge if you add dormer windows.

8 Finishing Touches - The Front Wall

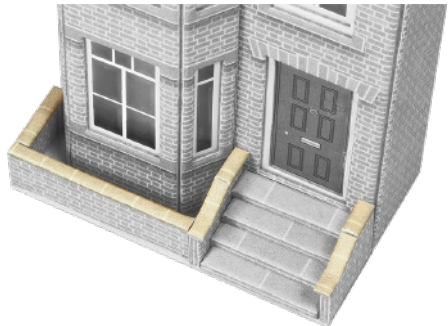


Fold back and glue to make the front and side walls double thickness.

Add the side wall first (if adding more houses to the row then this is not needed).

Then add the front wall, flush up to the step wall and resting against the end of the side wall.

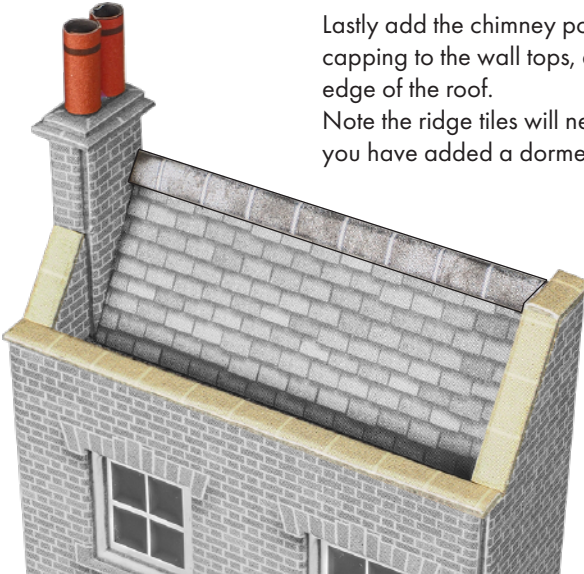
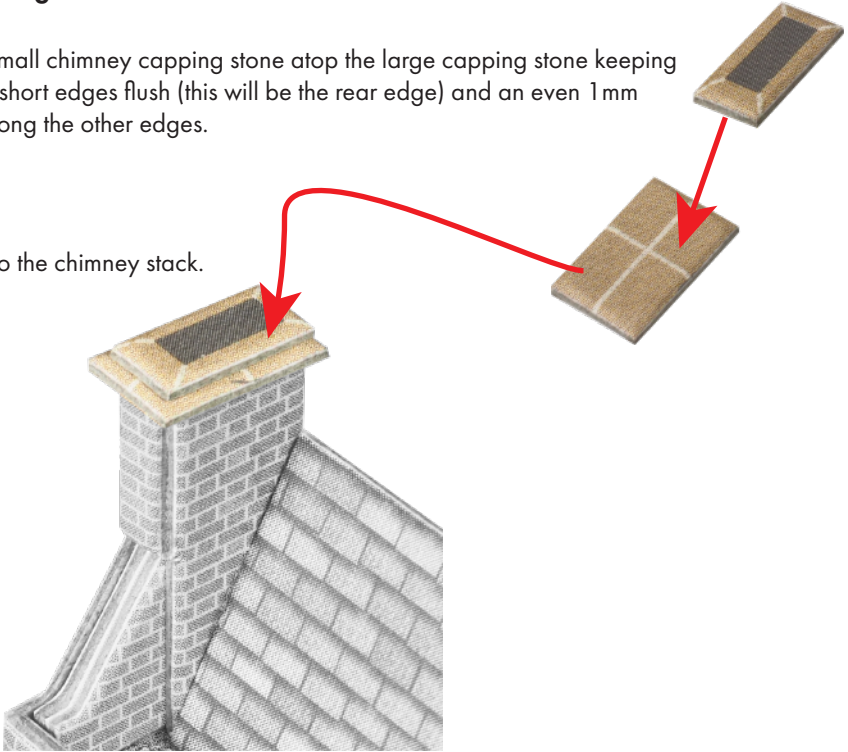
Now for the capping stones, use the thinner strips and cut to the required length. For the steps you'll need to carefully score the capping so that it fits neatly to the slope of the walls.



9 Finishing Touches - The Roof

Align the small chimney capping stone atop the large capping stone keeping one of the short edges flush (this will be the rear edge) and an even 1 mm spacing along the other edges.

Then add to the chimney stack.



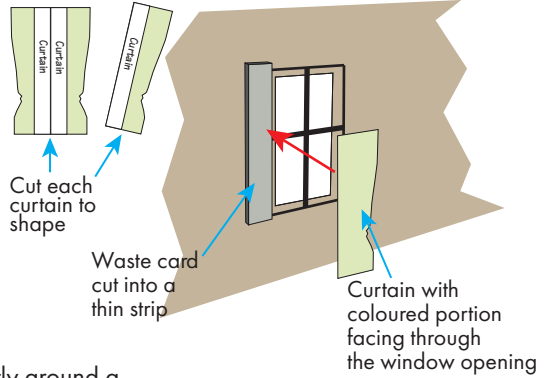
Lastly add the chimney pots (see fig 11), the wider wall capping to the wall tops, and the ridge tiles to the top edge of the roof.

Note the ridge tiles will need to be trimmed to fit flush if you have added a dormer window.

10 Curtains

To fit curtains fix a small strip of waste card to each side of the window, then glue the curtain to the waste card so that it shows through the window (the waste card will space the curtain back from the window a little giving a greater effect of depth).

For extra curtains, visit this product on our website www.metcalfeamodels.com



11 Chimney Pots

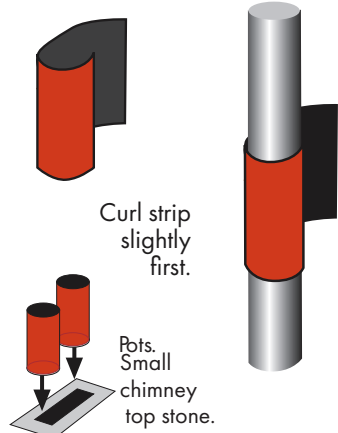
Cut into strips the chimney pots, then roll tightly around a nail or rod approximately 4mm in diameter

Then unroll the end enough to smear with a little glue, then roll back up and hold tight until set. To finish dab a little paint on top of the pot.

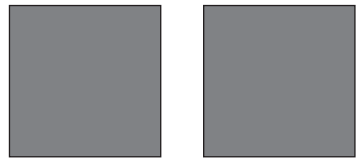
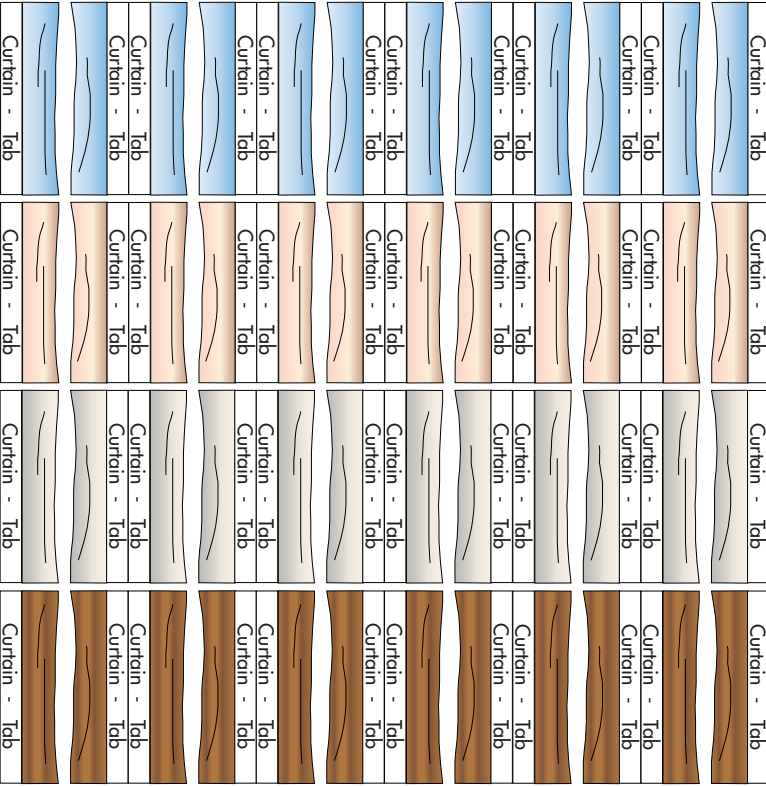
Please Note: once you have perfected the art of rolling your own chimney pots you will soon realise that they are extremely realistic and finish the model nicely. So please be patient and keep trying, the chimney pots do make all the difference.

You can download more chimney pot sheets from our website: www.metcalfeamodels.com - navigate to this product and click the downloads tab.

There will be a pdf you can download and print.

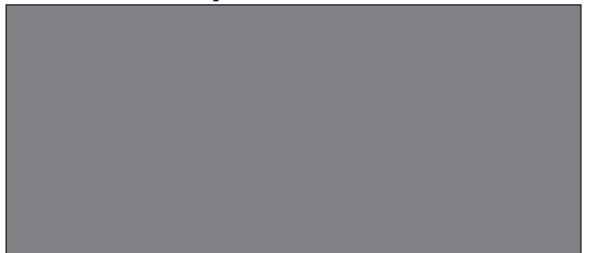


Curtains



Dormer Window Backs

Bay Window Back



Chimney Pots

