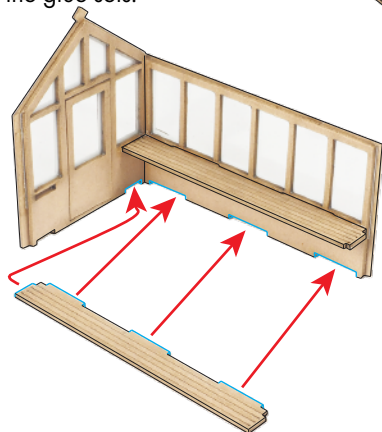
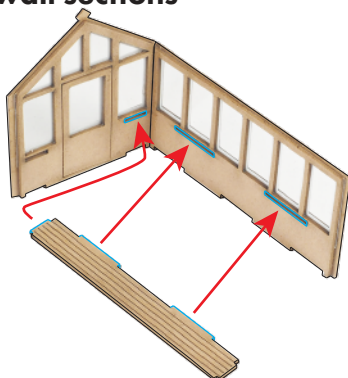


3 Assembling the wall sections

Fold the wall 90° and add the top shelf (S1) into place.

Notice the 3 slots on the inside of the wall, these align with the 3 tabs on the shelf.

Test the fit, then hold fast until the glue sets.



Now add the floor shelf (S2). This fits in a similar way, this time with 4 tabs and corresponding slots. Again test the fit then glue into position.

The other wall section goes together the exact same way.

Allow time for the glue to set before moving on.

PO514 00 Scale GREENHOUSE

CHECK LIST
This kit pack contains the following:
1 x Brown Sheet
1 x Window Sheet
2 x Instruction Sheets

Instruction Sheet 1

READ THROUGH ALL THE INSTRUCTIONS BEFORE YOU START.

To construct this kit you will need the following:

1. A Modellers knife.
2. A steel ruler.
3. Glue - UHU Solvent Free Clear Adhesive is our favourite.
4. A cutting surface - a sheet of card or a cutting mat.
5. Fine point tweezers to hold the smaller components.
6. Metcalfe UltraFine Tip Glue Applicator (Code: MT907)

EXTRACTING COMPONENTS FROM SHEETS.

To stop the components from falling off the sheets, they are held secure with small score points.

To release the laser components carefully push them out from the card with the point of your tweezers. These components are delicate if they don't easily push out, hold to the light and see where the score points are located and if need be carefully cut with your knife.

Store the released components in a separate 'Builders Yard'. This is an area kept away from your working surface, keep the components here until needed. Use a tray or thick piece of card to make your builders yard.

PO514 00 Scale GREENHOUSE

Instruction Sheet 2

4 Combining the walls

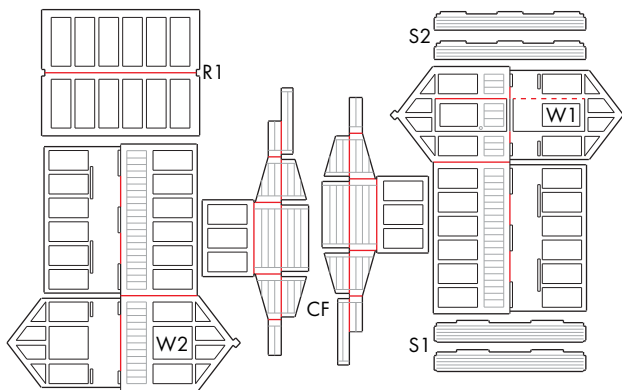


Now combine the two walls.

The tabs on the shelves fit in the slots on the opposite wall.

Test the fit carefully before applying glue, then hold fast until set.

1 Getting Started



Before construction, test each component and make sure the scorelines (marked in red) fold easily.

If needed gently run your knife through the score until they freely fold.

The dashed red line represents the inside door, if you want the door to open cut along this line then reattach after you have added the windows.

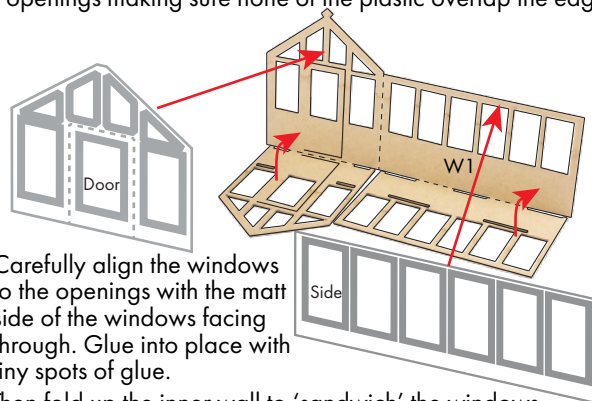
Parts Plan

W1 - Front & side wall
W2 - Rear & side wall
S1 - Shelf x2
S2 - Floor shelf x2
R1 - Roof

CF - Cold frame x2

2 Windows

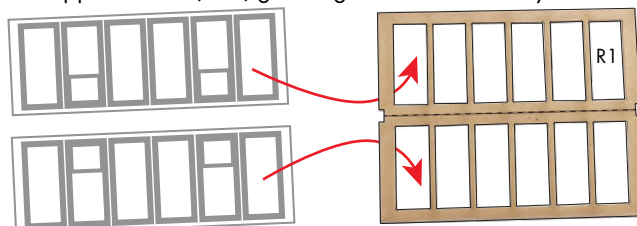
The windows are a close fit to the greenhouse frame so take your time cutting out the windows and test the fits against the openings making sure none of the plastic overlap the edges.



Carefully align the windows to the openings with the matt side of the windows facing through. Glue into place with tiny spots of glue.

Then fold up the inner wall to 'sandwich' the windows in between.

The opposite wall (W2) goes together the same way.



Add the two roof windows to the underside of the roof.

Metcalfe Models and Toys Ltd. Bell Busk, Skipton, N. Yorkshire, BD23 4DU.

© Copyright 2019.

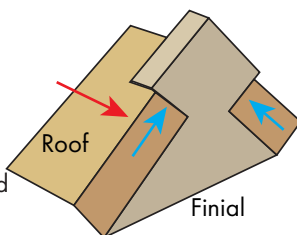
5 Roof

Next the roof, note the notches at both ends of the roof.

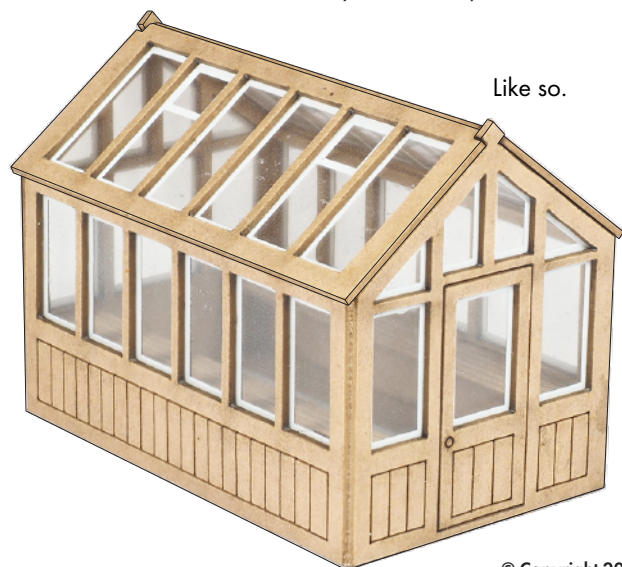
These fit under the finials on the end walls.

Test the fit first, you will need to have the roof bent at the correct angle then push under the finial.

It won't fit directly from the top.



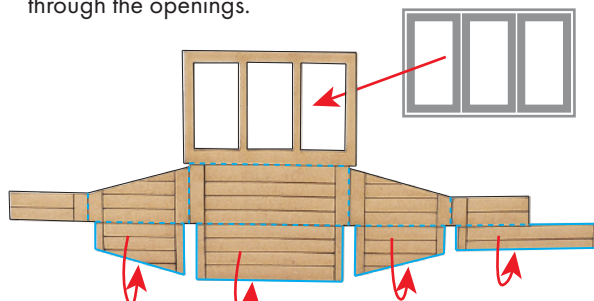
Like so.



© Copyright 2019.

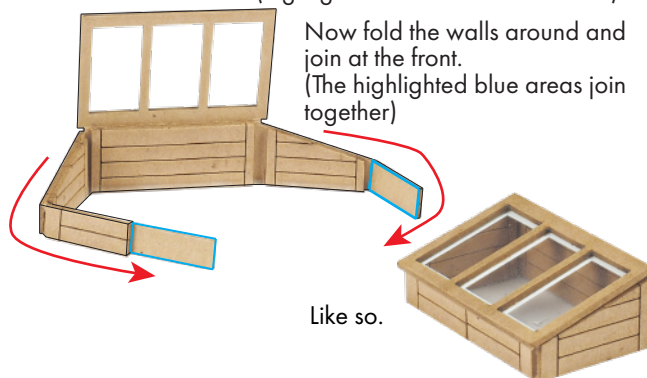
6 Cold Frames

First add the windows, again the gluing area is very small so use tiny drops of glue and carefully align the matt white through the openings.



Then fold the inside sections around and glue fast to create double thick walls. (highlighted above in blue outlines)

Now fold the walls around and join at the front. (The highlighted blue areas join together)



Like so.

Metcalfe Models and Toys Ltd. Bell Busk, Skipton, N. Yorkshire, BD23 4DU.