

PO258 OO Scale

Gardener's Cottage

INSTRUCTIONS

GLUES

UHU Solvent Free All Purpose Adhesive Glue

Works superbly well in our fine glue applicators. Dries quickly, but allows time for positioning of kit parts as described further on in the instructions.

Also Deluxe Materials 'SPEEDBOND'
A fast drying PVA.
see www.deluxematerials.com

GETTING STARTED

1 EXTRACTING COMPONENTS FROM THE BASE SHEETS.

To stop the components from falling off the sheets, they are held secure with score lines. These are cuts that only go about 75% of the way through the card.

To release them run the point of your knife along these score lines and they will come seamlessly away. These score lines are marked with blue arrows: WARNING, Cut with care using a knife that is not too sharp, this will reduce the risk of the blade running off the score and cutting the components.

2 MAKE YOUR 'BUILDERS YARD'.

As you extract the components from the base sheets they need to be kept away from your working area on a thick piece of card or a tray until needed. Keep the components organised to which building they belong to.



CHECK LIST

This kit should contain the following:

- 2 x PRINTED SHEET. Kit parts.
- 1 x GREY SHEET. Strengtheners parts.
- 1 x BROWN SHEET. Laser cut parts.
- 1 x GLAZING SHEET. Windows.
- 1 x INSTRUCTION BOOKLET.
- 1 x EXTRA BITS SHEET. Chimney pots, curtains.
- 1 x RIDGE TILES SHEET.

READ THROUGH ALL THE INSTRUCTIONS BEFORE YOU START.

This is a complex kit that requires particular attention to detail, so proceed with care!

To construct this kit you will need the following:

- 1. A modellers knife.
- 2. A pair of sharp scissors.
- 3. A steel ruler.
- 4. Glue - See glues.
- 5. Ultra Fine Tip Glue Applicator, see below.
- 6. A cutting surface - a sheet of card or cutting mat.
- 7. Fine point tweezers.
- 8. Water colour paints and a very fine brush for painting edges and corners.

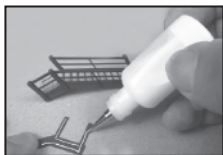
METCALFE

Ultra Fine Glue Tip Applicators.

These bottles are essential for gluing the smaller components in this kit.



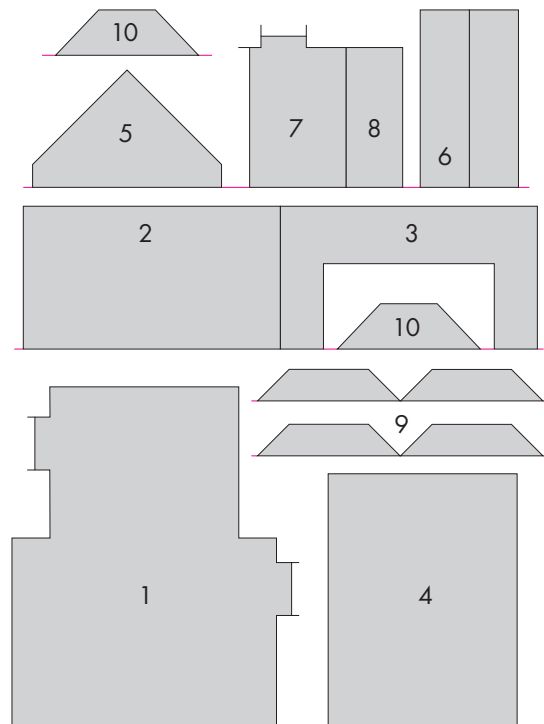
Tiny strips and spots of glue can be accurately laid down with precision.



3 **STRENGTHENERS.**

To help identify the strengtheners, below is a key to the components.

- 1 - House Base
- 2 - Chimney Wall Support
- 3 - Centre Wall Support
- 4 - Inner Floor
- 5 - Centre Wall Joiner
- 6 - Chimney Supports (x2)
- 7 - Lean-to Base
- 8 - Extension Base
- 9 - Bay Window Bases (x4)
- 10 - Bay Window Roof Supports (x2)



4 **PAINTING THE EDGES**

The white card that shows on the corners and edges is best painted before you build the kit.

All you need is a simple set of water colour paints and a fine brush.

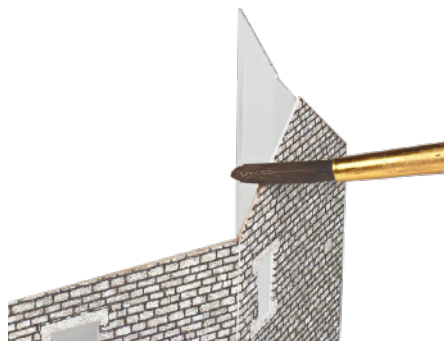
Something like this set of 'Reeves' watercolours or even simple child's watercolours.



Mix your colour with lots and lots of water, apx. 1 part paint to 5 parts water or more. **TEST ON WASTE CARD FIRST UNTIL YOU HAVE THE CORRECT SHADE & COLOUR.**

Fold the edges of the card back fully and gently run the point of your brush along the exposed white card. Only tiny amounts of paint on your brush. It's better to have to go over it a few times than to flood it with paint. Before the paint dries, run your finger along the edge to rub the colour into the absorbent white card. Then wipe away any paint that has run onto the printed surface before it dries.

Remember, you only need to just slightly tint the card with a little colour. **DON'T** paint a thick solid line down the edges, you will only make it look worse.



Paint all exposed edges, window frames, roof ridge as well as the wall edges..

LET'S START TO BUILD!

Fig. 1. THE MAIN HOUSE

1. Carefully cut out the glazing along the outer white lines. For the main house you need the following windows:

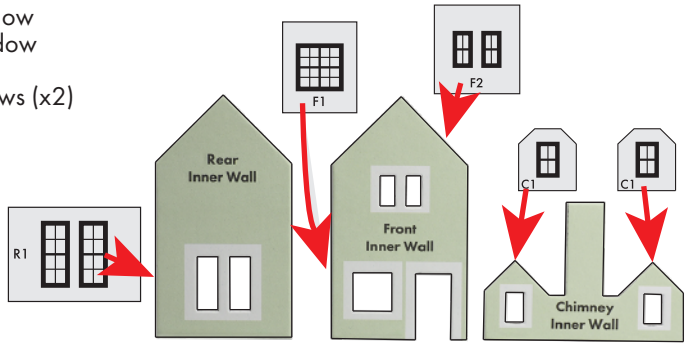
F1 - Front Inner wall lower window

F2 - Front Inner wall upper window

R1 - Rear Inner wall window

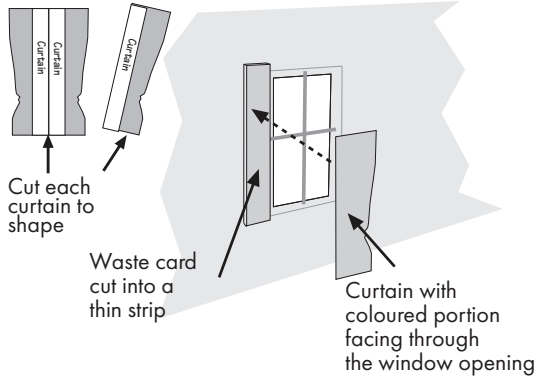
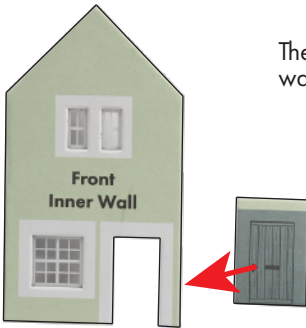
C1 - Chimney Inner wall windows (x2)

Fix each window to the openings with the matt printed side facing through the openings. Make sure the window is centred correctly within the frame.



Then add the front door aligned to the opening on the front inner wall, keeping the bottom edges flush.

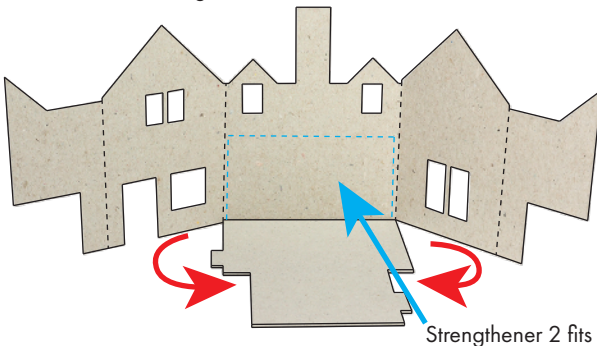
If you wish to add curtains, now is the time to do so.



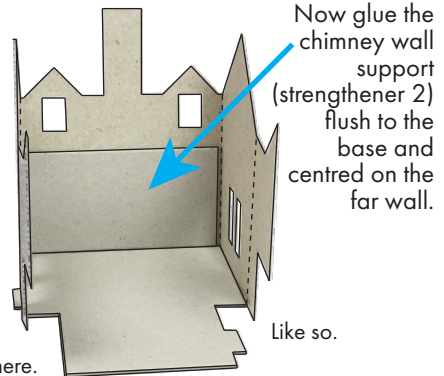
To fit curtains fix a small strip of waste card to each side of the window, then glue the curtain to the waste card so that it shows through the window (the waste card will space the curtain back from the window a little giving a greater effect of depth).

For extra curtains, visit this product on our website www.metcalfe-models.com

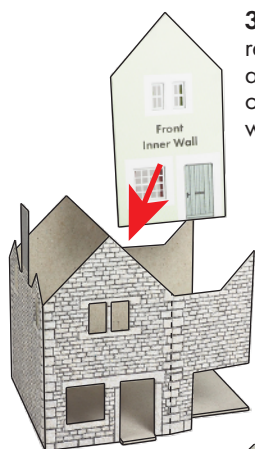
2. Wrap the main walls around the wider section of the house base (strengtheners 1).



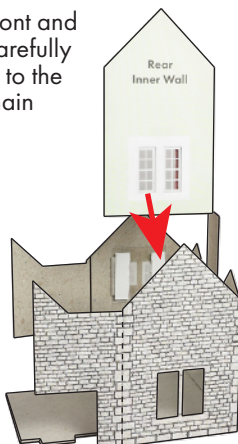
Strengtheners 2 fits here.



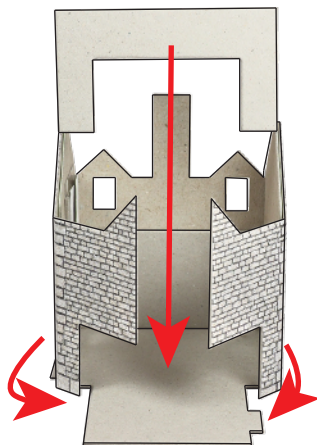
Like so.



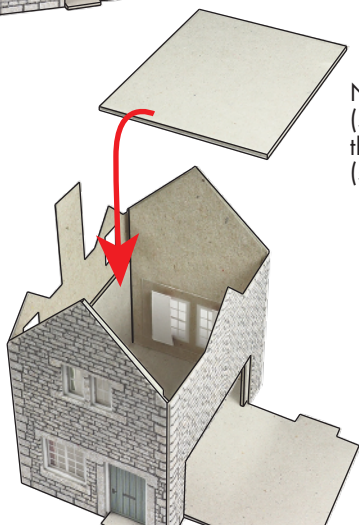
3. Now add the front and rear inner walls, carefully align the windows to the openings on the main walls.



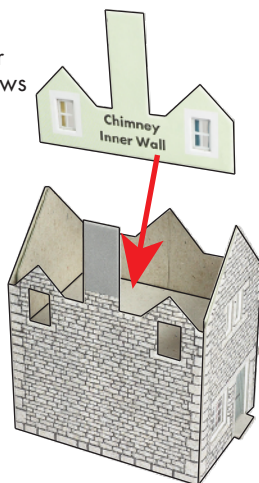
The centre wall support (strengtheners 3) acts as a joiner for the two end walls, fold the walls around and glue fast to the support.



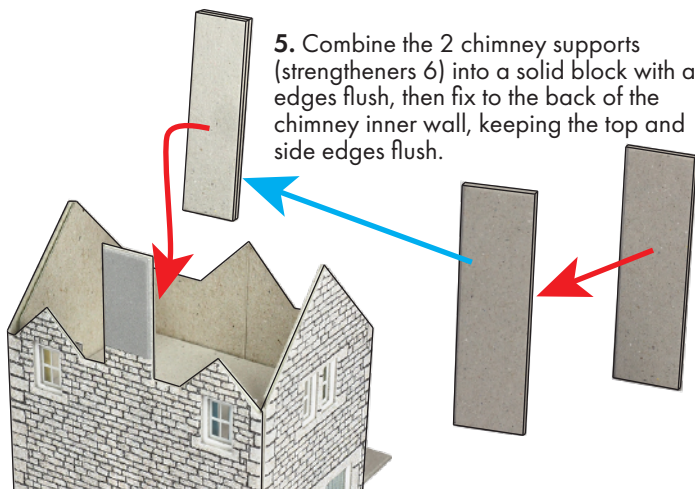
Now add the inner floor (strengtheners 4) this fits flush to the top of the 2 wall supports (strengtheners 2 & 3)



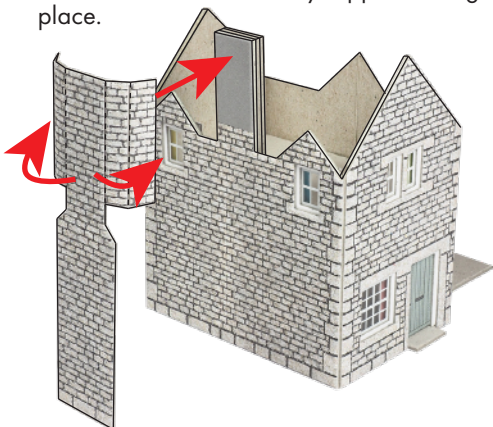
4. Next add the chimney inner wall, carefully align the windows to the openings and keep the chimney stack edges flush.



5. Combine the 2 chimney supports (strengtheners 6) into a solid block with all edges flush, then fix to the back of the chimney inner wall, keeping the top and side edges flush.

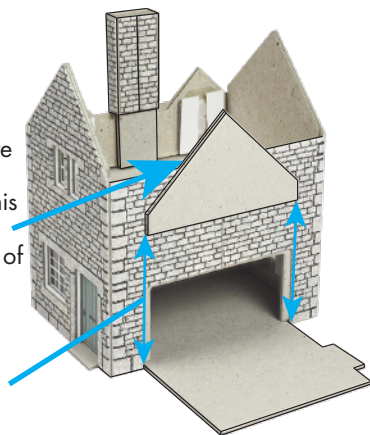


Now add the chimney stack, wrap the top section around the chimney supports and glue in place.



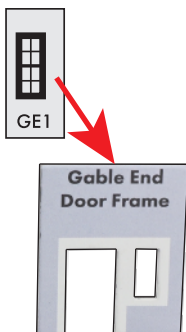
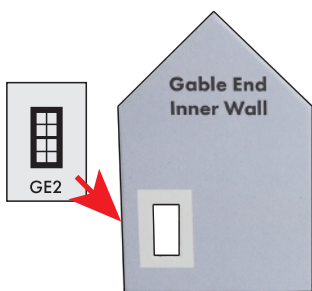
Now add the centre wall joiner (strengtheners 5). This aligns central and flush with the apex of the walls.

Take your time aligning this as the corners need to be aligned with the edges of the base.

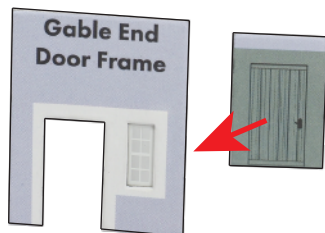


6. Now to add the gable end. First add the windows, then any curtains.

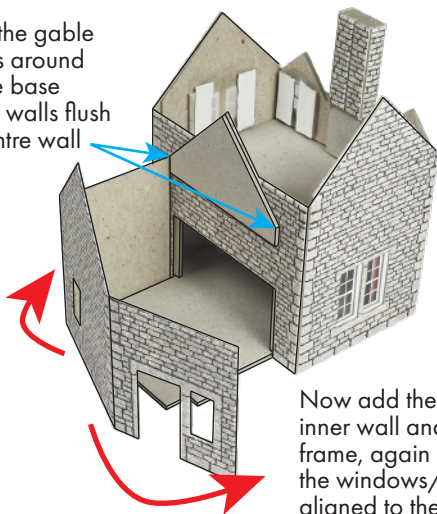
GE1 - Door frame window
GE2 - Gable end window



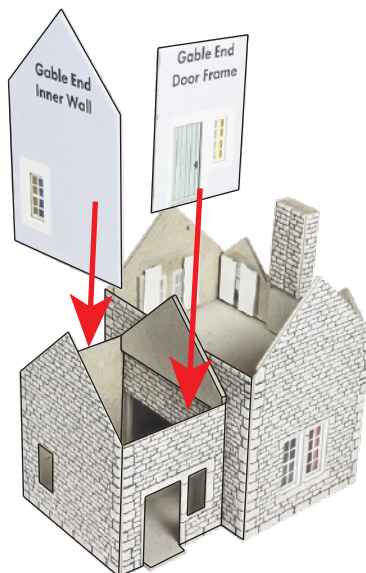
Then add the gable door to the back of the door frame, keeping the bottom edges flush



7. Wrap the gable end walls around the house base fixing the walls flush to the centre wall joiner.



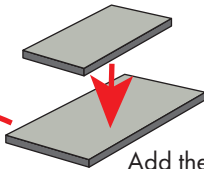
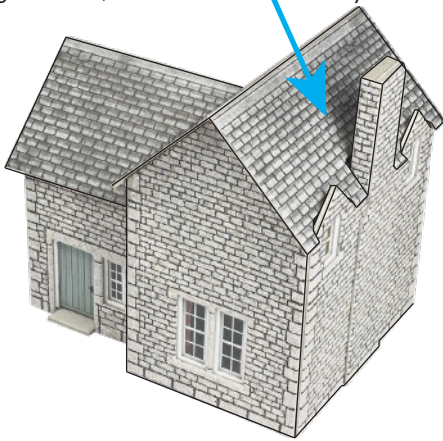
Now add the gable end inner wall and door frame, again keeping the windows/door aligned to the openings.



8. Now add the gable roof, make sure the edge is tight against the centre wall.



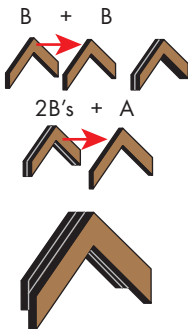
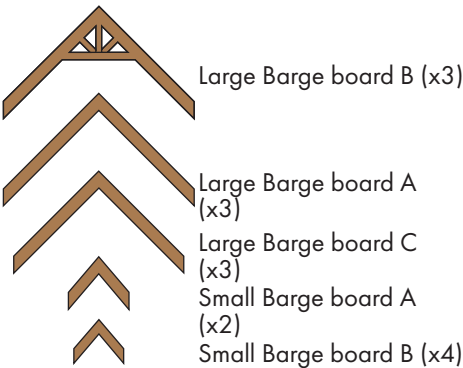
Then add the main roof so it fits flush to the gable roof, and around the chimney stack.



Add the smaller chimney capping stone to the centre of the larger capping stone

Then add to the chimney stack.

9. Below is a key to the laser cut barge board components.



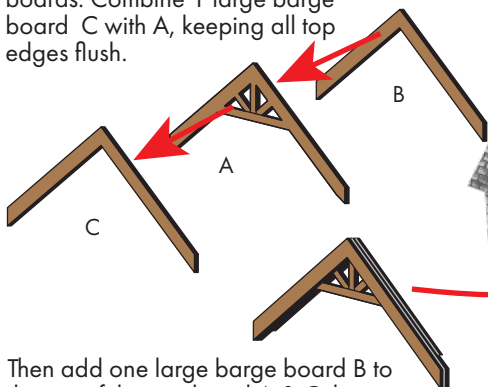
Glue 2 of the small barge board B's into a block keeping the edges flush.

Then add the small barge board A, keeping the apex edges flush, the longer edges overlapping at the base.

Like so.

Repeat to get a second set.

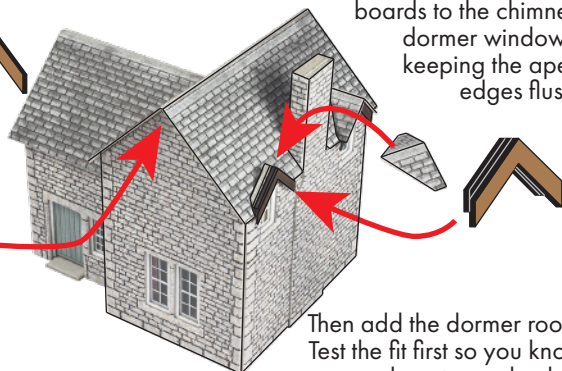
Now combine the large barge boards. Combine 1 large barge board C with A, keeping all top edges flush.



Then add one large barge board B to the top of the combined A & C, keeping the apex edges flush with an overhang at the bottom edge. Repeat to finish with 3 identical sets.

Glue into place the barge boards with the edges flush with the edge of the rear, front and gable roofs.

Add the small barge boards to the chimney dormer windows, keeping the apex edges flush.

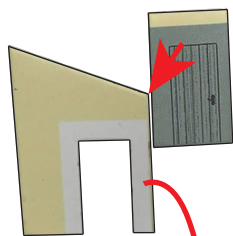


Then add the dormer roofs. Test the fit first so you know where to apply glue.

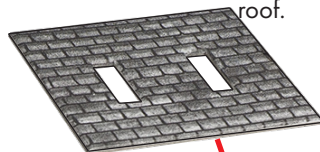
Fig. 2. OPTIONAL ADD-ONS

10. Lean-to.

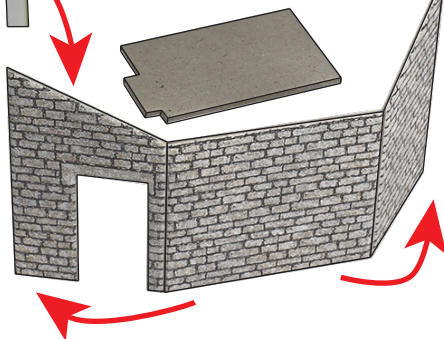
1. Fix the lean-to door flush with the door frame.



2. Wrap the lean-to walls around the lean-to base (strengtheners 7)



3. Add the door to the opening on the walls



4. Align the roof window to the openings of the lean-to roof.



5. Then the roof, centred and flush with the rear wall.

Like so.



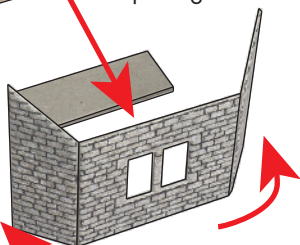
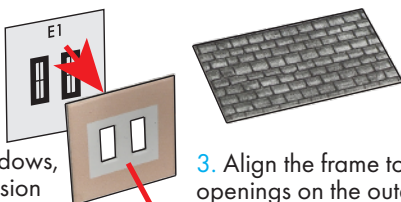
11. Extension.

1. Add the windows, E1 to the extension window frame.

2. Wrap the extension walls around the extension base. (strengtheners 8)

3. Align the frame to the openings on the outer wall

4. Then add the roof, centred and keeping the rear edges flush.



12. Bay Windows.

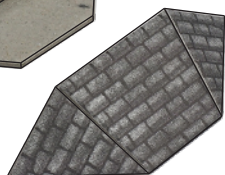
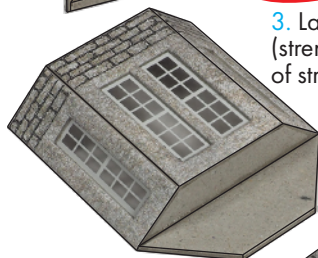
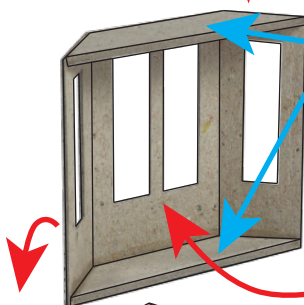
1. Wrap the bay window around 2 of the bay window bases (strengtheners 9) keeping them flush to the top and bottom edges.

2. Carefully score the glazing along the dashed line and gently bend the glazing to the same angle of the bay windows. Test the fit, trim the top and bottom edges if needed and glue into place.

5. Add a black square backing to the rear of the bay window before fixing to the main building, so the stonework of the walls doesn't show through the bay windows.

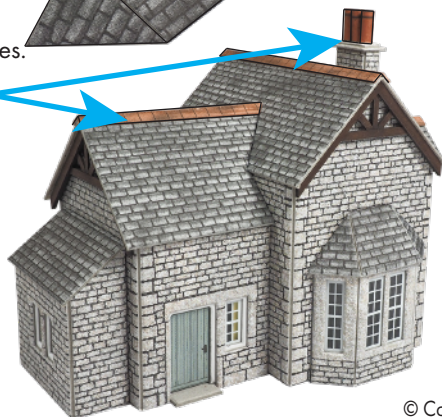
3. Lay flat and fit the roof support (strengtheners 10) flush to the top of strengtheners 9.

4. Then add the bay roof, again test the fit so you can see where to apply glue.



13. Finishing Touches.

Add ridge tiles and chimneys.



The optional add-ons can be placed in multiple locations around the main building. They also can be interchanged with the add-ons from PO259 crofter's cottage for more customisation.