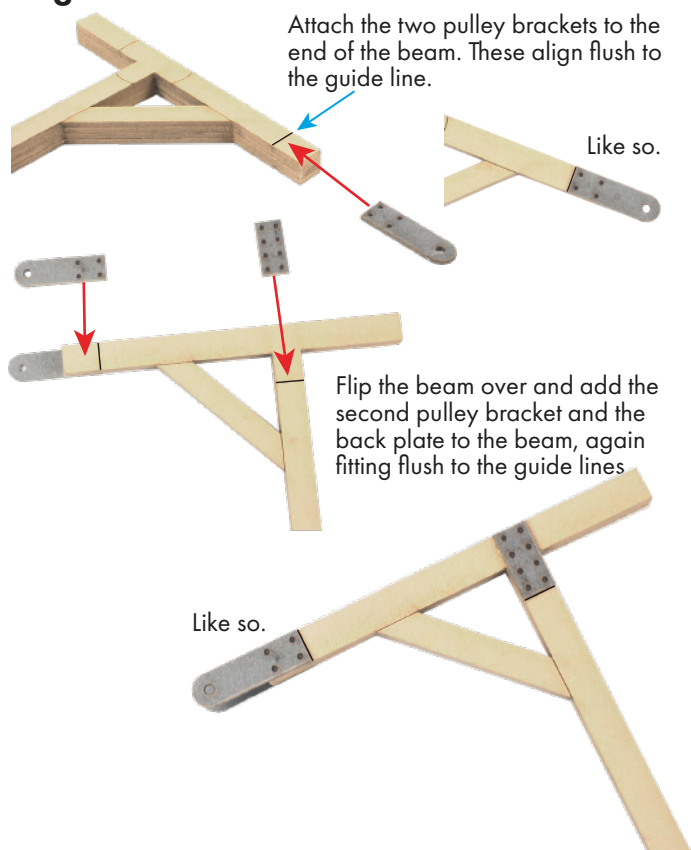


Fig. 3 - BEAM ASSEMBLY



P0540 Goods Yard Crane

CHECK LIST

This kit contains the following:

- | | |
|------------------------|---------------------|
| 1 x Brown Laser | 1 x Dark Grey Laser |
| 1 x Length of chain | |
| 2 x Instruction Sheets | |

Instruction Sheet 1

READ THROUGH ALL THE INSTRUCTIONS BEFORE YOU START.

To construct this kit you will need the following:

1. A Modellers knife.
2. Glue - UHU Solvent Free Clear Adhesive is our favourite.
3. A cutting surface - a sheet of card or a cutting mat.
4. Fine point tweezers to hold the smaller components.
5. Metcalfe UltraFine Tip Glue Bottle (Code: MT907)

EXTRACTING COMPONENTS FROM SHEETS.

To stop the components from falling off the sheets, they are held secure with small score points.

To release the laser components carefully push them out from the card, these components are delicate.

Store the released components in a separate 'Builders Yard'. This is an area kept away from your working surface, keep the components here until needed. Use a tray or thick piece of card to make your builders yard.

This kit contains small components that need to be combined we highly recommend using a glue that sets slowly so you have time to correctly align the pieces, UHU is an excellent example.



Instruction Sheet 2

Fig. 4 - ADDING THE WHEELS & PULLEYS

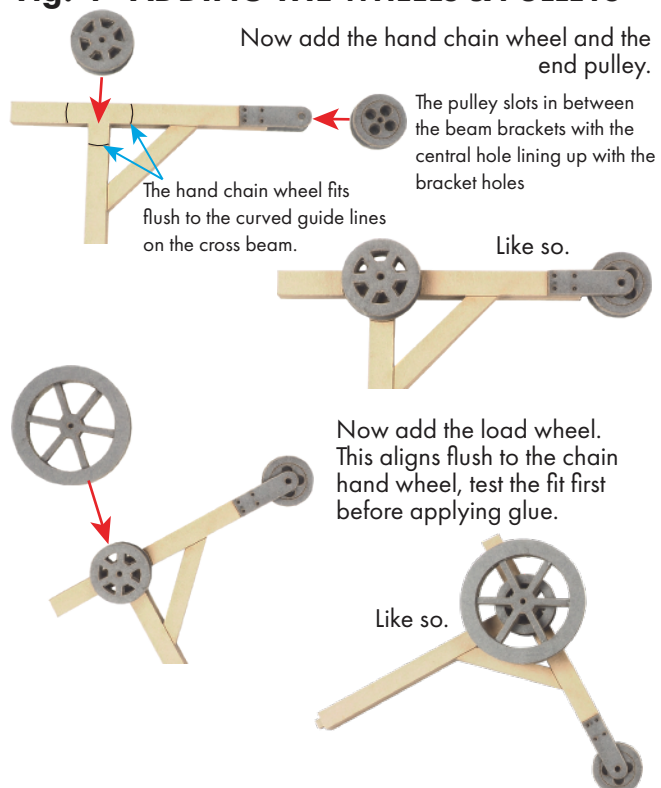


Fig. 1 - SUPPORT BEAM

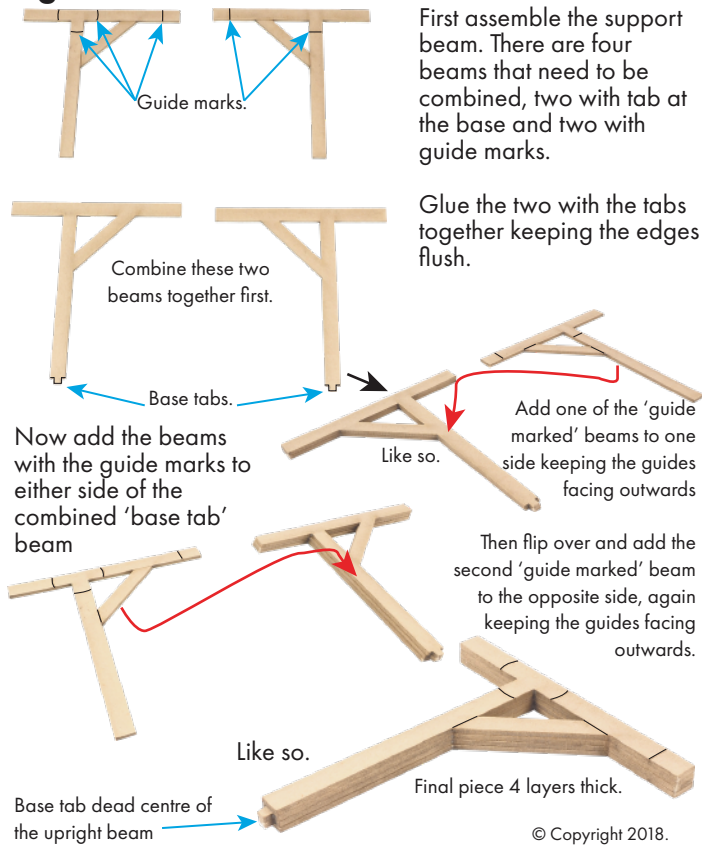
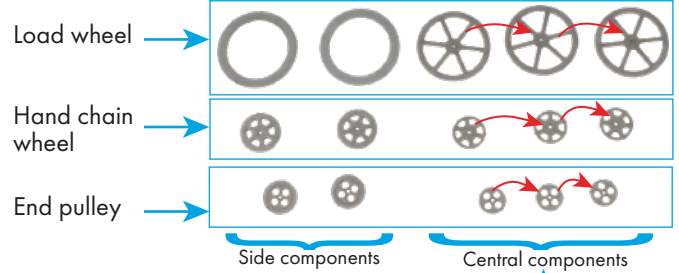
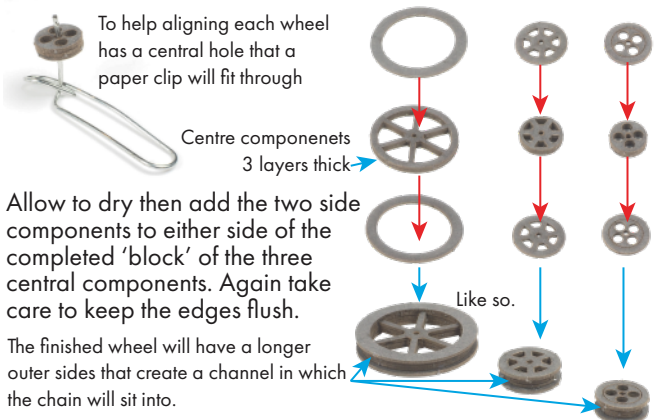


Fig. 2 - WHEELS & PULLEYS

There are three wheels/pulleys to assemble.



First carefully align the three central components and glue them together keeping all the edges flush.



Metcalfe Models and Toys Ltd. Bell Busk, Skipton, N. Yorkshire, BD23 4DU.

Fig. 5 - BASE ASSEMBLY

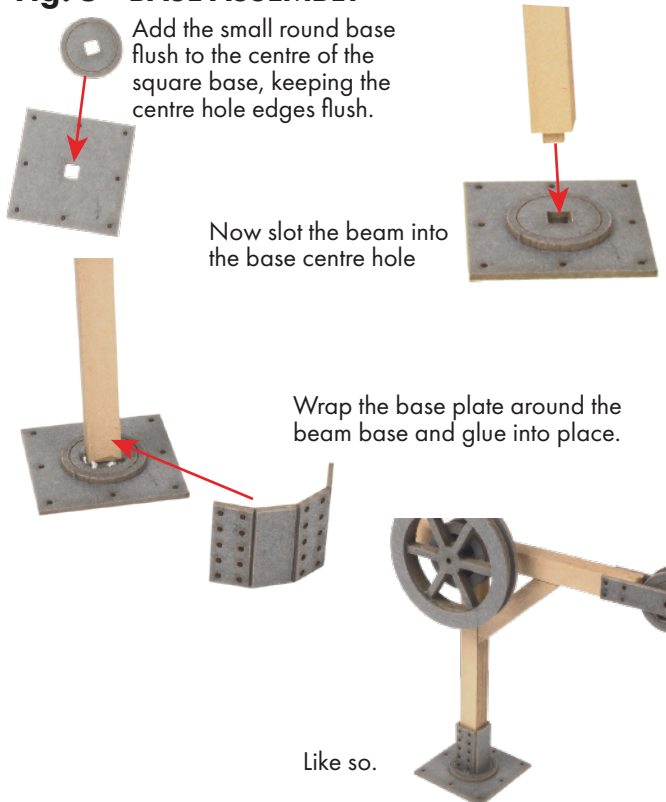


Fig. 6 - CHAIN & HOOK

Finally the fiddly bit! Tweezers and a steady hand are required.

Take the chain and fully stretch it out into a straight line on your work surface. Note that the slot on the hook is the same size as a single link in the chain.



Apply glue into the hook slot and using tweezers carefully place the end of the chain into position.



Allow the glue to dry before placing the chain to the completed crane.