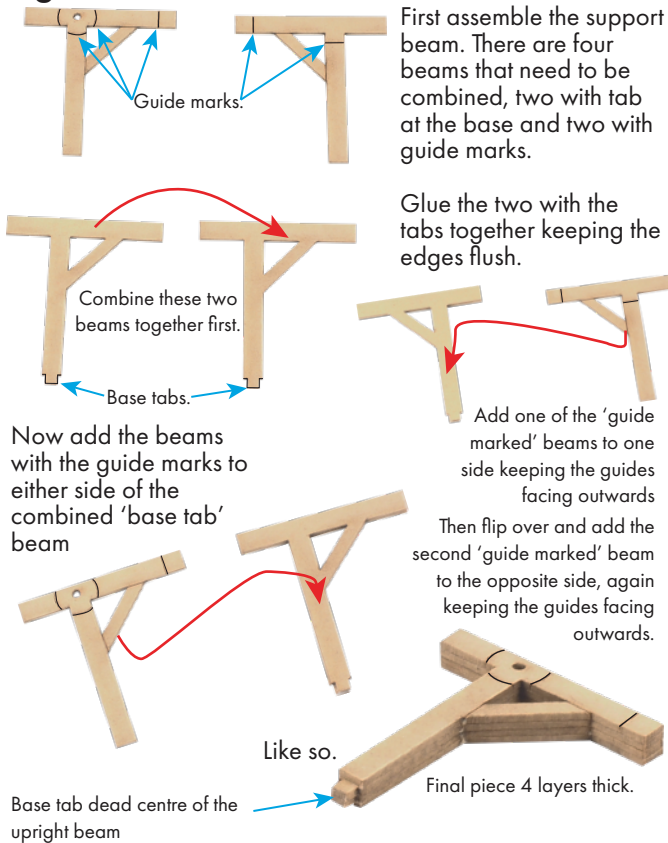


**Fig. 2 - SUPPORT BEAM**



## PN840 Goods Yard Crane

### CHECK LIST

This kit contains the following:

- |                        |                     |
|------------------------|---------------------|
| 1 x Brown Laser        | 1 x Dark Grey Laser |
| 1 x Length of chain    |                     |
| 2 x Instruction Sheets |                     |

## Instruction Sheet 1

### READ THROUGH ALL THE INSTRUCTIONS BEFORE YOU START.

To construct this kit you will need the following:

1. A Modellers knife.
2. Glue - UHU Solvent Free Clear Adhesive is our favourite.
3. A cutting surface - a sheet of card or a cutting mat.
4. Fine point tweezers to hold the smaller components.
5. Metcalfe UltraFine Tip Glue Bottle (Code: MT907)

### EXTRACTING COMPONENTS FROM SHEETS.

To stop the components from falling off the sheets, they are held secure with small score points.

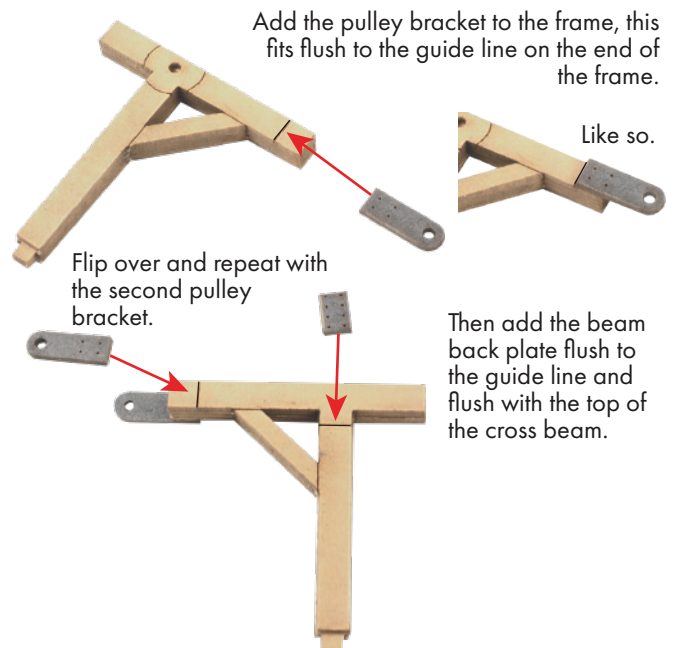
To release the laser components carefully push them out from the card, these components are delicate.

Store the released components in a separate 'Builders Yard'. This is an area kept away from your working surface, keep the components here until needed. Use a tray or thick piece of card to make your builders yard.

**This kit contains small components that need to be combined we highly recommend using a glue that sets slowly so you have time to correctly align the pieces, UHU is an excellent example.**

## Instruction Sheet 2

**Fig. 3 - BEAM ASSEMBLY**



## Fig. 1 - WHEELS & PULLEYS

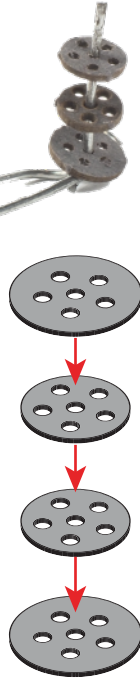
There are three wheels/pulleys to assemble.

Use a paper clip or pin in the holes to help align the components and keep the edges flush.

The end pulley: carefully align the four circular components with the six holes, the two larger components 'sandwich' the two smaller in between.



Like so.



The load wheel & hand chain wheel are combined together as shown.

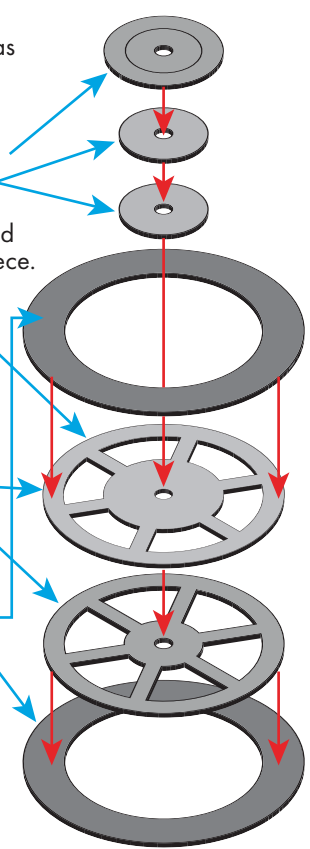
Start with the small hand chain wheel, glue the larger circular piece to the two small pieces.

These then glue to the inner load wheel with the larger centre piece.

The larger and smaller inner load wheels glue flush together.

These are then framed by the two outer wheels keep the inner wheel edges flush.

Like so.



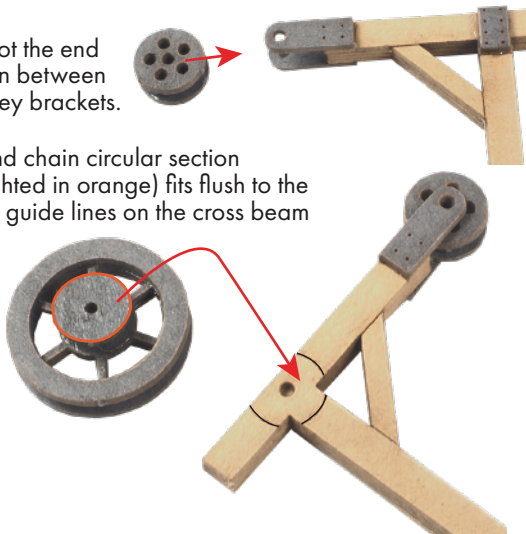
© Copyright 2018.

Metcalfe Models and Toys Ltd. Bell Busk, Skipton, N. Yorkshire, BD23 4DU.

## Fig. 3 - BEAM ASSEMBLY cont'd

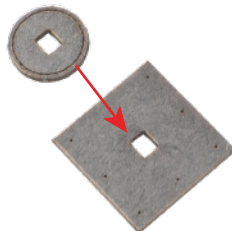
Now slot the end pulley in between the pulley brackets.

The hand chain circular section (highlighted in orange) fits flush to the circular guide lines on the cross beam

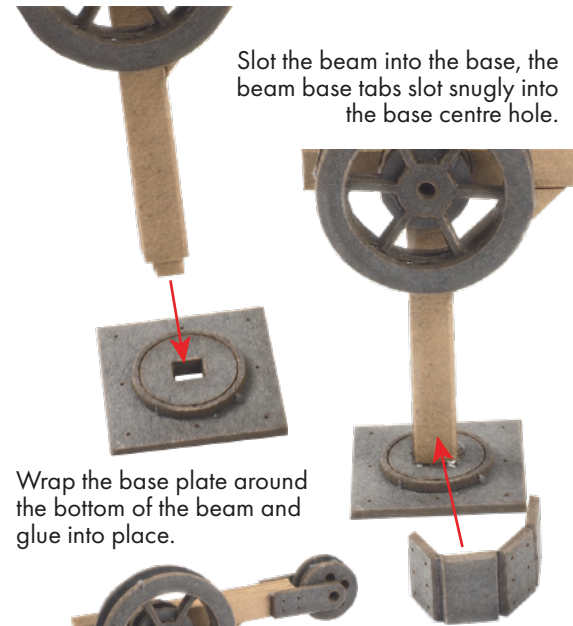


## Fig. 4 - BASE ASSEMBLY

Add the small round base flush to the centre of the square base, keeping the centre hole edges flush.



Slot the beam into the base, the beam base tabs slot snugly into the base centre hole.



Wrap the base plate around the bottom of the beam and glue into place.



Like so.

Once the glue has set add the chain. (see next page)