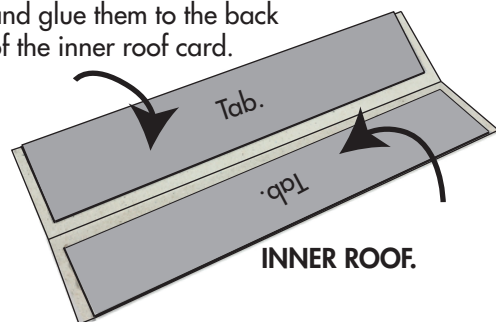
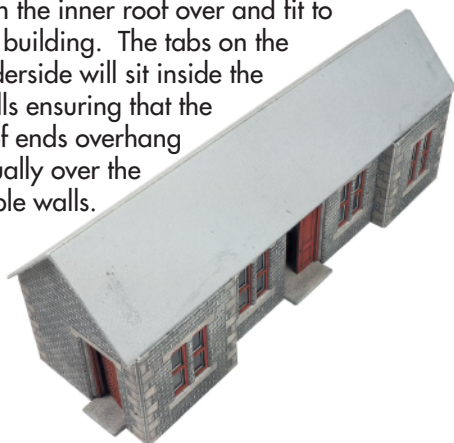


7 THE ROOF.

Start off by folding the long grey tabs over and glue them to the back of the inner roof card.



Turn the inner roof over and fit to the building. The tabs on the underside will sit inside the walls ensuring that the roof ends overhang equally over the gable walls.



Now fix the printed roof firmly down onto the inner roof card. Make sure the ends overhang equally over each gable.



The inner roof acts as the support for the barge boards holding them at the correct distance from the walls



Like this.

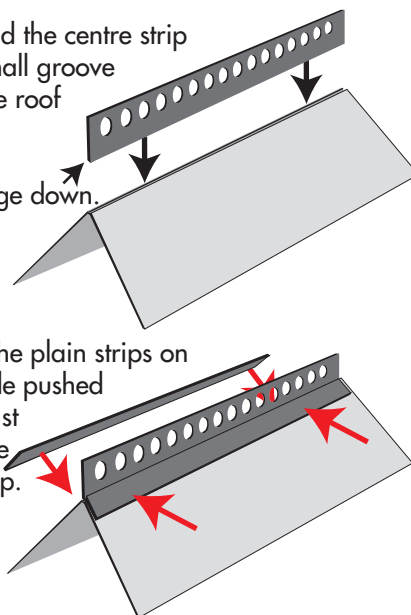


8 THE RIDGE TILE STRIP.

First stand the centre strip in the small groove along the roof ridge.

Thick edge down.

Then fit the plain strips on either side pushed up against the centre ridge strip.



PO334 Settle & Carlisle Railway Platform Shelter

CHECK LIST

This kit should contain the following:

- 1 x SHEET A Printed components.
- 1 x SHEET B Printed components.
- 1 x SHEET L1. Laser cut windows/Doors.
- 1 x SHEET L2. Barge boards.
- 1 x SHEET L3. Laser cut ridge tiles.
- 1 x GLAZING sheet.
- 1 x INSTRUCTION LEAFLET.

READ THROUGH ALL THE INSTRUCTIONS BEFORE YOU START.

This is a complex kit that requires particular attention to detail, so proceed with care!

To construct this kit you will need the following:

1. A modellers knife.
2. A pair of sharp scissors.
3. A steel ruler.
4. Glue - See *glues*.
5. Ultra Fine Tip Glue Applicator, see below.
6. A cutting surface - a sheet of card or cutting mat will do.
7. Fine point tweezers.

PAINTING CORNERS & EDGES.

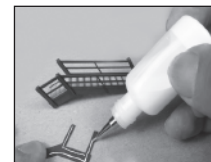
It is not necessary to paint the edges etc. on this kit, it won't look any better.

METCALFE Ultra Fine Glue Tip Bottles.

These bottles are essential for gluing the smaller components in this kit.



Tiny strips and spots of glue can be accurately laid down with precision.



INSTRUCTIONS

GLUES

UHU Solvent Free All Purpose Adhesive Glue.

Works superbly well in our fine glue applicators. Dries quickly, but allows time for positioning of kit parts as described further on in the instructions.

Also Deluxe Materials 'SPEEDBOND' A fast drying PVA.

see www.deluxematerials.com

GETTING STARTED

1 EXTRACTING COMPONENTS FROM THE BASE SHEETS.

To stop the components from falling off the sheets, they are held secure with score lines. These are cuts that only go about 75% of the way through the card.

To release them run the point of your knife along these score lines and they will come seamlessly away. These score lines are marked with blue arrows: **WARNING**, Cut with care using a knife that is not too sharp, this will reduce the risk of the blade running off the score and cutting the components. Laser cut components have tiny 'pips' holding them on the base sheet. Carefully push at those points and they will snap out easily.

2 MAKE YOUR 'BUILDERS YARD'.

As you extract the components from the base sheets they need to be kept away from your working area on a thick piece of card or a tray until needed.

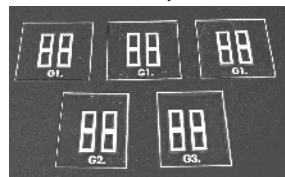
Example of builders yard.



Extract all the components from all of the sheets.

3 WINDOWS.

Cut out the five window sheets, then attach the three G1. pieces to the back of the three matching window frames with a single notch cut in the top edge

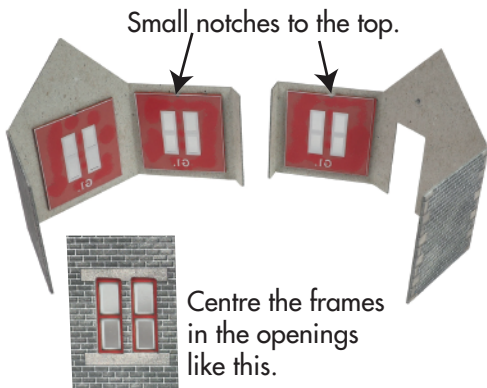


Fix the glazings G2. to the back of window 2 and G3. to 3.

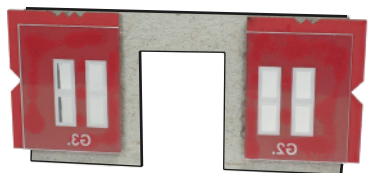


NOTE: trim any plastic overhang off that shows on these edges

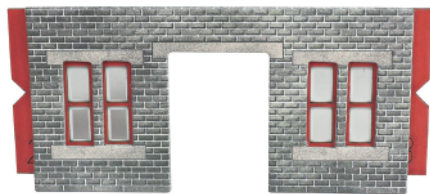
Now fix the three G1. windows to the back of the openings in the two gabled walls.



Next fix the G2. and G3. windows to the back of the front wall section. Fit with the small notches at the top and the sides with the single larger notches sticking out past the wall ends.

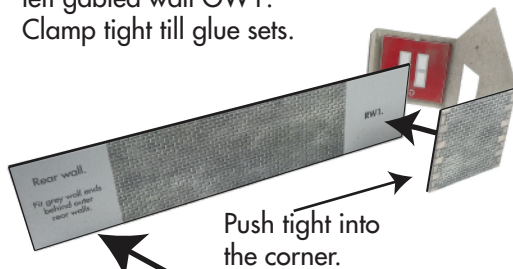


Viewed from the front, this is how it should look. DON'T attach the doors yet.

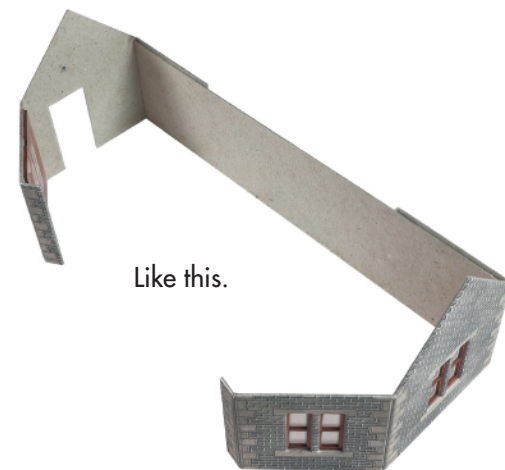


4 THE WALLS.

Fix the rear wall RW1. to the back of the left gabled wall GW1. Clamp tight till glue sets.



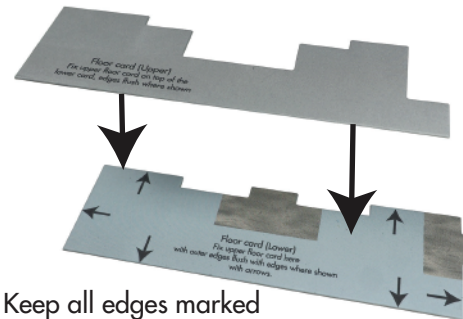
Then attach the other gabled wall GW2. to this end of the rear wall.



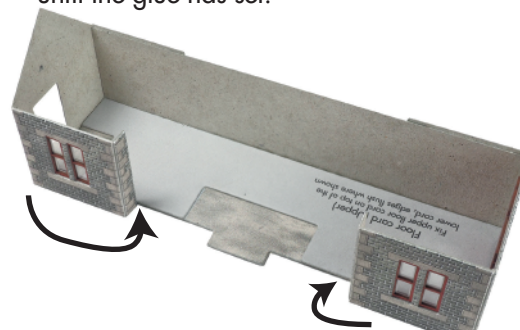
Like this.

5 THE FLOOR.

Glue the upper floor card on top of the lower



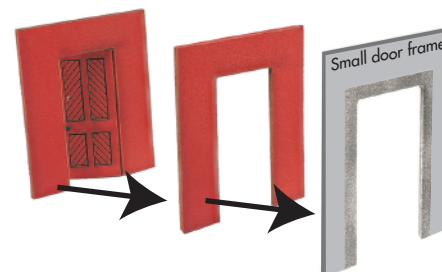
Keep all edges marked with arrows flush. Clamp or weight down until the glue has set.



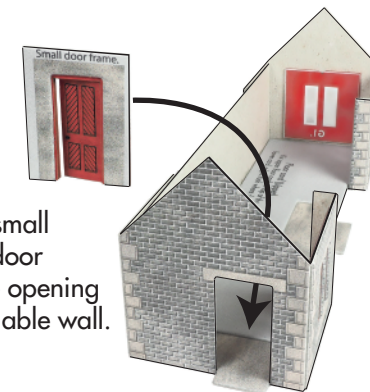
Now fix the walls around the floor card using tiny spots of glue placed along the inside bottom edges of the walls.

6 THE DOORS.

Fix the door to the back of the red door frames then on to the back of the printed door frame.

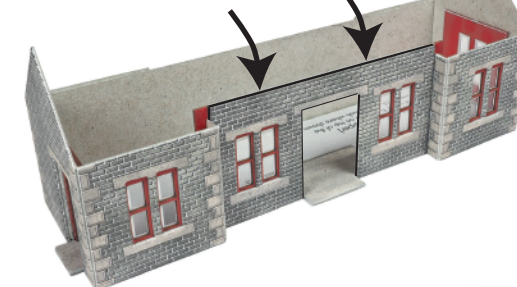


The single small door is shown here, but the larger double doors go together in exactly the same way.



Fit the small single door into the opening in the gable wall.

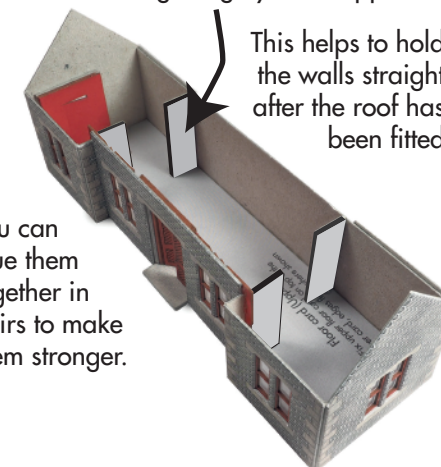
Now fit the front wall. It sits either side of the door step with the red tabs holding the wall against the two small folded-in walls.



Fit the double doors



Brace the walls inside using the grey wall supports



You can glue them together in pairs to make them stronger.