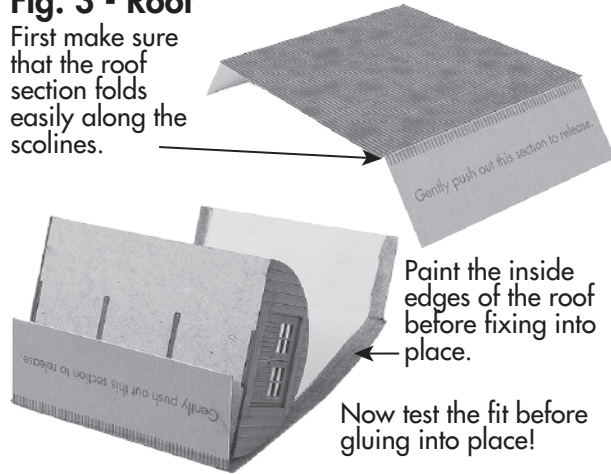
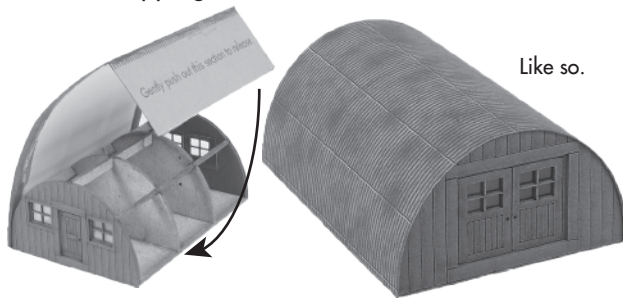


### Fig. 3 - Roof

First make sure that the roof section folds easily along the scolines.



The grey tabs fit underneath the frame with the roof section wrapping over the frame.



# PN815 Nissen Hut

## CHECK LIST

This kit pack contains the following:

- 1 x Grey Laser
- 1 x Thick Grey Sheet
- 1 x Artwork Sheet
- 2 x Instruction Sheets

## Instruction Sheet 1

### READ THROUGH ALL THE INSTRUCTIONS BEFORE YOU START.

To construct this kit you will need the following:

1. A Modellers knife.
2. A steel ruler.
3. Glue - UHU Solvent Free Clear Adhesive is our favourite.
4. A cutting surface - a sheet of card or a cutting mat.
5. Fine point tweezers to hold the smaller components.
6. Metcalfe UltraFine Tip Glue Bottle (Code: MT907)
7. Cocktail stick or thick wire for chimney (see fig. 5)

### EXTRACTING COMPONENTS FROM SHEETS.

To stop the components from falling off the sheets, they are held secure with small score points.

To release them simply run the point of your knife along the cut lines and they will come seamlessly away.

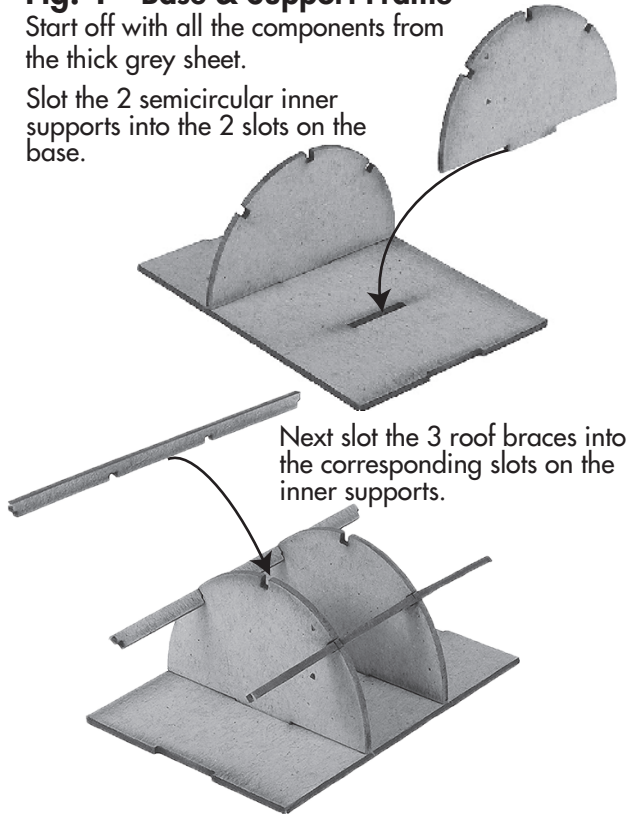
To release the laser components *carefully* push them out from the card, these components are delicate.

Store the released components in a separate 'Builders Yard'. This is an area kept away from your working surface, keep the components here until needed. Use a tray or thick piece of card to make your builders yard.

## Fig. 1 - Base & Support Frame

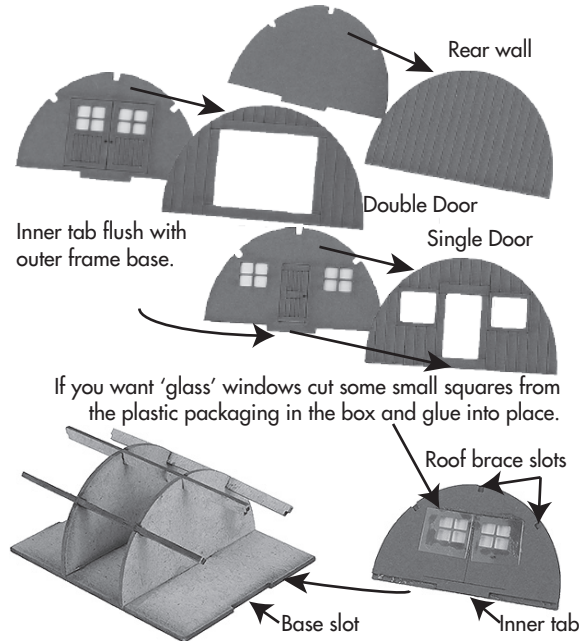
Start off with all the components from the thick grey sheet.

Slot the 2 semicircular inner supports into the 2 slots on the base.



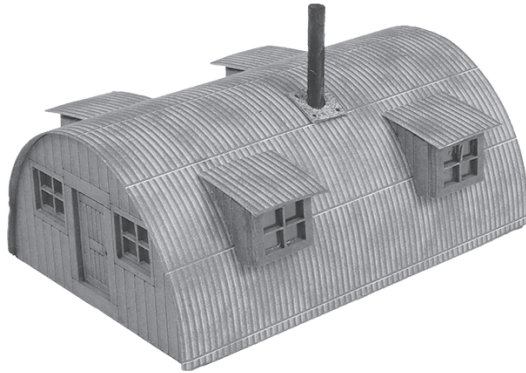
## Fig. 2. End Wall / Doorway

Align the inner support to the corresponding outer frame, keeping the curved edges flush.



## Fig. 5 - Finishing touches cont'd.

Now add the chimney. Paint it the colour required and sharpen the end to help slide through the 'guide hole' left behind by the pin in the plate.  
Trim the cocktail stick to the required height.

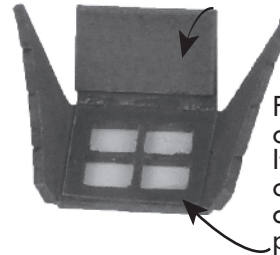
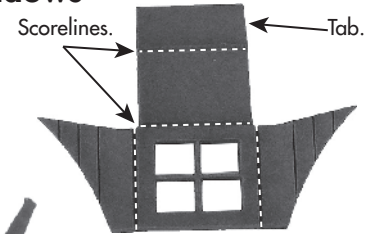


# PN815 Nissen Hut

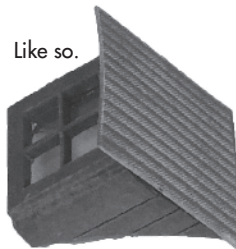
## Instruction Sheet 2

### Fig. 4 - Side Windows

First make sure that all the score lines fold easily, if not carefully run your knife along the scores.



Fold back and glue the tab to create a double thickness 'roof'. If you like window glazing, carefully cut out a small section of plastic from the box packaging and glue into place.

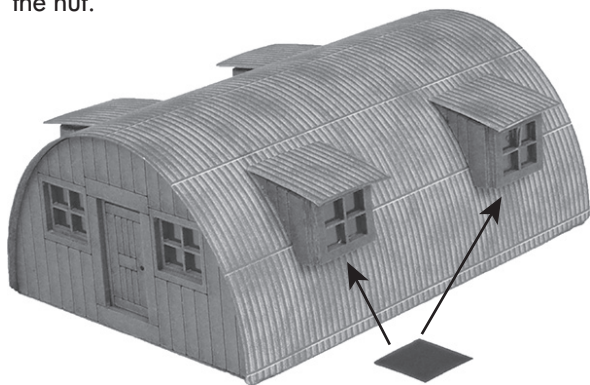


Glue the sides flush to the roof tab.

Next paint the underside of the printed window roof section. Place the window section on your worktop facing upwards and add the roof section the back of the roof laying flush to the worktop.

## Fig. 5 - Finishing Touches

Carefully align and glue the windows to the sides of the hut.

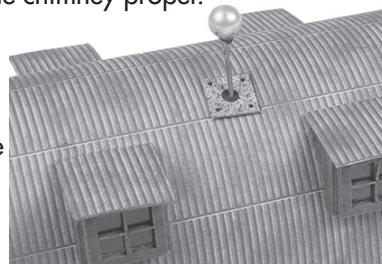


Cut out the black squares (opposite fig. 6) and slide them underneath the window to hide the roof artwork.

To add a chimney use a cocktail stick or wire, cut out a heat plate from the artwork below (fig.6), then pierce the centre with a pin - this will act as a 'pilot hole' for the chimney proper.



Slide the plate up the pin then stab the pin through the roof of the nissen hut where you'd like the chimney.



Remember where the inner frame is else the pin won't get very far in!  
Glue the plate into place and remove the pin.

## Fig. 6 - Artwork Extras

Black squares for windows



Chimney heat plates

