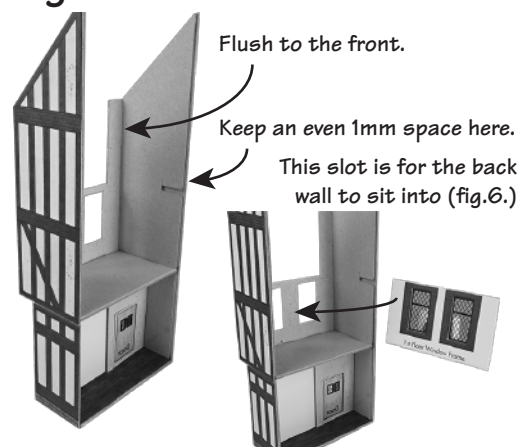
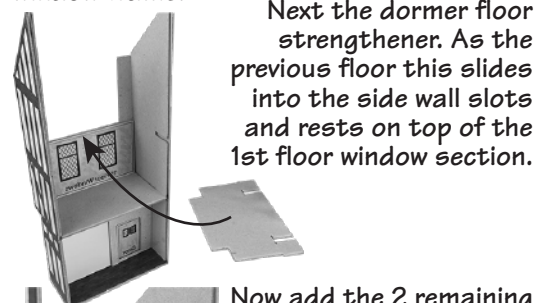


Fig. 5. UPPER FLOORS cont'd



Next add the inner 1st floor window frame, carefully position against the upper wall window frame.



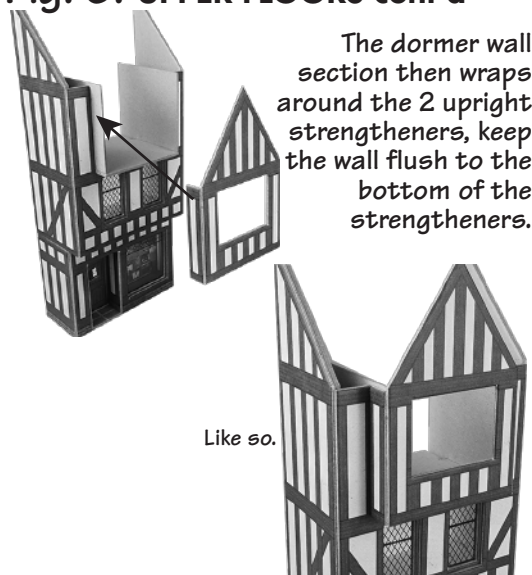
Now add the 2 remaining small strengtheners, these slide into the rear slots on the dormer floor and lie flush against outer front wall sections.

Allow both of these upright strengtheners to fully set into place before adding the dormer wall section.

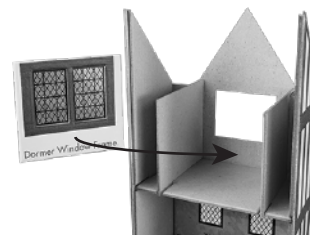


Like so.

Fig. 5. UPPER FLOORS cont'd



Like so.



Lastly add the dormer window frame to the inside of the dormer wall.

Fig. 6. ROOF



Add the main roof section first, flush to the sides and front.

Then the dormer roof.



Then the back, this slots on top of the base and flush against the inner strengtheners.

## PO421 00/HO Scale

### L/R Timber Frame Shop

#### READ THROUGH ALL THE INSTRUCTIONS BEFORE YOU START.

To construct this kit you will need the following:

1. A Modellers knife.
2. A pair of sharp pointed scissors.
3. A steel ruler.
4. Glue - UHU Clear Adhesive is our favourite.
5. Ultra Fine Tip Glue Applicator, *see right*.
6. A cutting surface - a sheet of card or a cutting mat.
7. Fine point tweezers to hold the smaller components.
8. Water colour paints and a very fine brush, for painting the edges and corners.

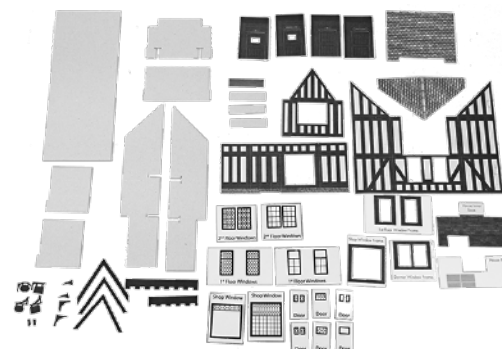
### GETTING STARTED

To stop the components from falling off the sheets, they are held secure with score lines. These are cuts that only go about 75% of the way through the card. To release them simply run the point of your knife along the score lines and they will come seamlessly away. →  
WARNING, Cut with care using a knife that is not too sharp, this will reduce the risk of the blade running out of the score and cutting the kit components.

The laser cut card components are held to the base sheet by very small score points, these parts can be carefully pushed free.

Extract all the components from each of the sheets.

Place these components neatly in a tray or separate piece of thick card away from your working area to create your builders yard.



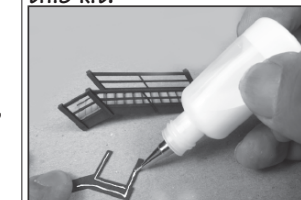
## INSTRUCTION SHEET 1

### CHECK LIST

This kit pack should contain the following:

- 1 x SHEET A - Printed card components
- 1 x GREY CARD - Strengthening components
- 1 x DARK BROWN CARD - Laser cut parts
- 2 x INSTRUCTION SHEETS.
- 1 x Glazing sheet.
- 1 x Ridge Tiles

The METCALFE Ultra Fine Tip Glue Bottles are essential for gluing the smaller components in this kit.



Tiny strips or spots of glue can be accurately laid down with precision.



Always replace the pin after use and store the bottles upside down to keep the glue moist.

### UHU All Purpose Adhesive Glue

Is available in standard and solvent free. Both types are fine for use in our glue bottles, even though the instructions on the back of the packs warn against solvent based glues, we have tested the UHU solvent based glue and it works fine. The solvent free glue doesn't string as much, but can be a little harder to clean off if it drips onto unwanted areas.

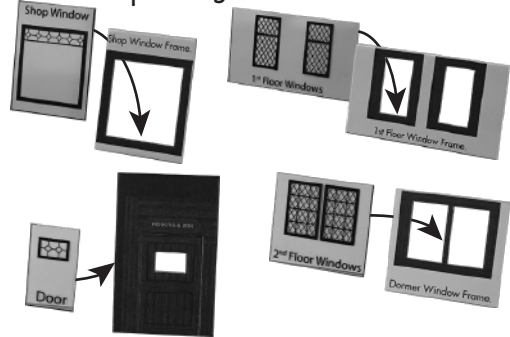
### Speed Bond by Deluxe Materials

This is an excellent PVA. based glue that dries quickly, but also allows time to get parts into position. It has the added advantage that it dries clear leaving little evidence if it oozes out of joints etc. Used in our fine glue applicator bottles a 112g bottle lasts for ages.  
[www.deluxematerials.com](http://www.deluxematerials.com)

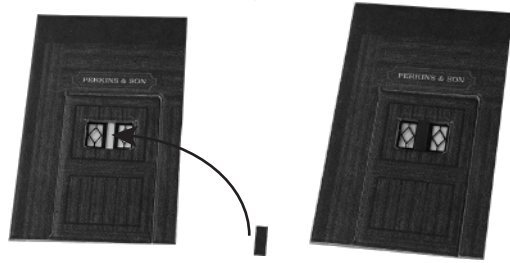
Your **WORKING** area should have a clean flat surface, and should only contain the kit parts you are actually working on.

## Fig. 1. WINDOWS

Start off by affixing the glazing, align and glue into place your choice of window to the corresponding window/door frame.



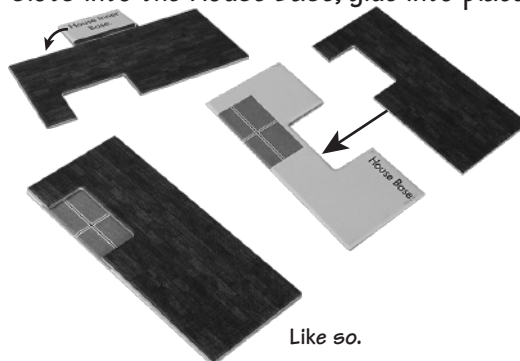
There is a split door window, due to die cutting restrictions that door was taken off the final kit. However there is a couple of small strips on the laser cut card. Simply add one of those strips to the door to create the split window.



Put the completed door and windows back into the builders yard until needed.

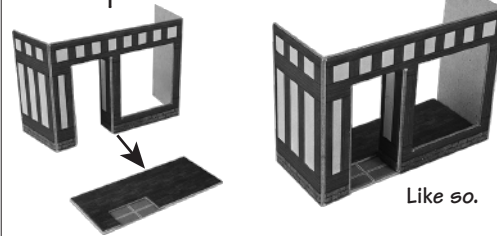
## Fig. 2. BASE

Fold and glue the House Inner Base yellow tab back to act as a guide, which then slots into the House Base, glue into place.

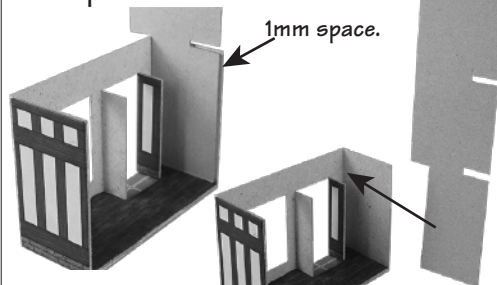


## Fig. 3. GROUND FLOOR WALLS

Now take the lower wall section and carefully wrap it around the house base. The doorway walls fit snugly into the doorstep area.



Now add the 2 side strengtheners. Fit them flush into the wall corners to leave a 1mm space at the rear.

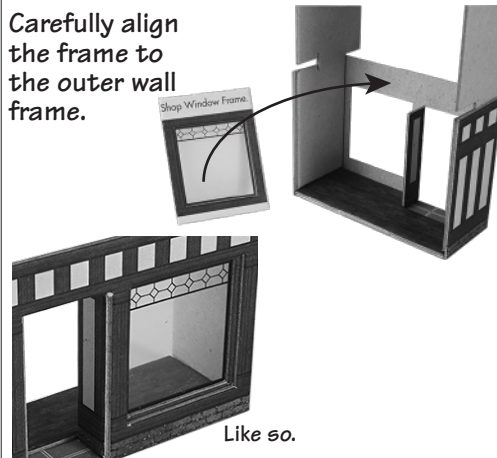


Repeat for the opposite wall.

## Fig. 4. SHOP DISPLAY

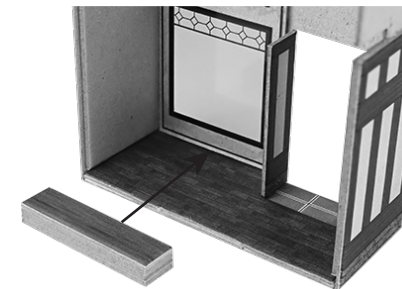
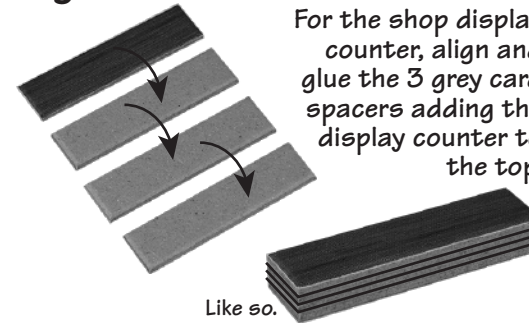
First add the shop window, if you haven't already added the glazing to the window frame, do this first (see fig. 1.)

Carefully align the frame to the outer wall frame.

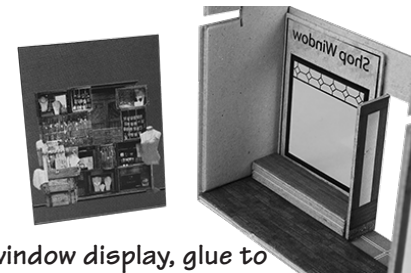


## Fig. 4. SHOP DISPLAY cont'd

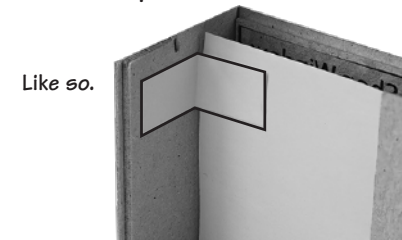
For the shop display counter, align and glue the 3 grey card spacers adding the display counter to the top.



Now slide the completed counter into place flush against the inside of the window.

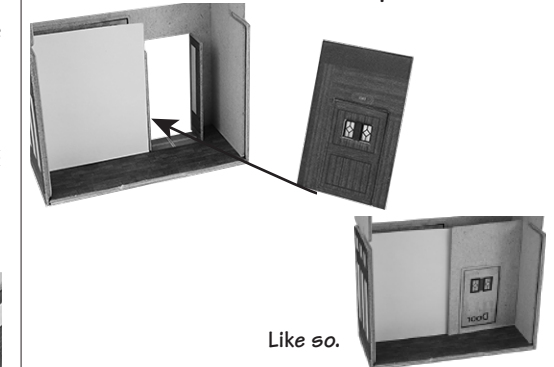


Add a window display, glue to the rear of the counter. (see fig. 8 for displays)  
To help keep the window display in place cut a piece of waste paper, fold and use as a brace in the top corner.



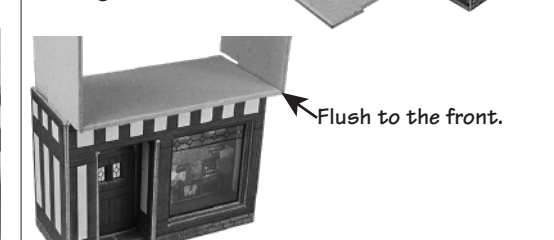
## Fig. 4. SHOP DISPLAY cont'd

Finally add the door. Carefully check the alignment before gluing into place.



## Fig. 5. UPPER FLOORS

Next add the floor strengthener, this slips into the side wall strengthener slots and finishes flush to the front and rear of the side wall strengtheners.



Now wrap the upper wall section around the side strengtheners. Make sure the side strengtheners are tight into the corners of the wall section and are flush at the top. (see next page)

