

# PO274/5 OO Scale Low Relief Terrace House Fronts INSTRUCTIONS

## CHECK LIST

This kit pack should contain the following:

- 2 x SHEET A - Components for house fronts
- 1 x SHEET B - Extra bits for customisation.
- 2 x PLAIN GREY CARD - Interior strengthening parts.
- 1 x LASER-CUT CARD - Selection of front gates.
- 1 x GLAZING SHEET.
- 2 x INSTRUCTION SHEETS.
- 1 x RIDGE TILE SHEET.
- 1 x PAVING SLABS SHEET.

## PRE-BUILD PREPARATIONS

### Tools you'll need to build this kit

(all of which are available on our website:

[www.metcalfemodels.com](http://www.metcalfemodels.com))

1. A modellers knife
2. A cutting mat
3. A steel ruler
4. A pair of fine pointed tweezers
5. Water colour paint set
6. Metcalfe ultra fine tipped glue applicator
7. Glue (see below)

### Glues

We recommend using a combination of glues, Speed bond and Rokat card glue, both are produced by Deluxe materials.

**Rokat card glue** is an instant, fast drying glue which is great quickly securing components that require little positioning. It also comes with it's own fine tip applicator.

**Speed Bond** is a slightly slower drying glue which is ideal for the components where careful positioning is required.

**UHU solvent free** is also a great all round glue and is excellent for fixing the plastic windows.

**Metcalfe ultra fine tipped glue applicator** is essential for applying small amounts of glue to the smaller components.

These bottles come in a pack of

3 and are best used with Speed Bond and UHU, simply unscrew the top and fill with the glue.



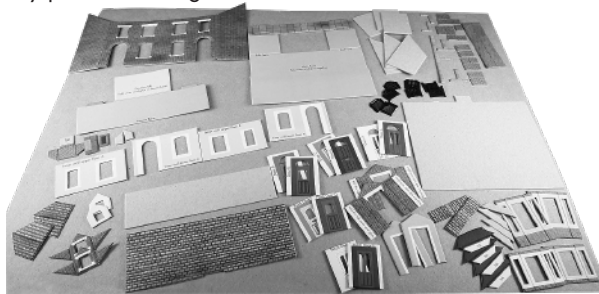
### Extracting the components

To prevent the components from falling off the sheets they are held secure with scorelines, marked with a → These are cuts that only go about 75% of the way through the card. To release them carefully run the point of your knife along these scorelines and they will come seamlessly away, be very careful your blade does not run off the score and damage the components. Use a steel ruler as a guide especially if using a new sharp blade. Keep the components organised and away from your work area on a piece of card or tray that we will call your builders yard.

## Laser Cut Sheet

The front gates have been laser cut for finer detail and are contained on a separate black sheet.

The gates are held onto the sheet by a score line along the base of the gates, carefully run a sharp knife along the score then gently push free using tweezers.



Your working area should have a clean flat surface, and should only contain the kit parts you are actually working on.

Everything else should be kept neatly arranged in the Builder's yard, until needed as shown above.

**PLEASE NOTE: Don't throw anything away. Keep all the offcuts and waste card in a box until the kit is finished, just in case you can't find anything. The chances are that it will be there.**

## Fig. 1. THE WINDOWS

This is a fiddly bit!

Start by cutting out all the plastic window sections.

Cut along the thin white lines that mark them out.

Place them on a dark surface so you can see them.



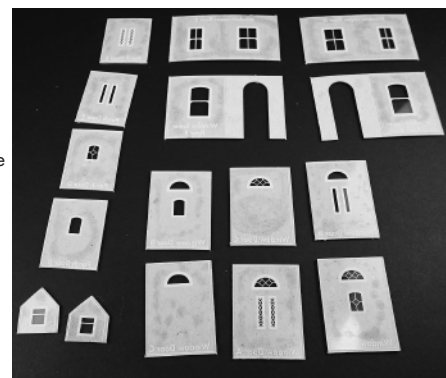
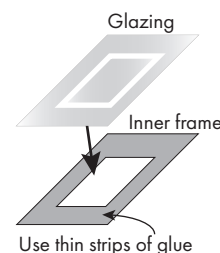
There are multiple options for each window type so keep them grouped together to avoid confusion.

Decide first which style to use.

Fix each of the glazing sheets, matt facing through the openings, to the back of the corresponding inner window and door frames. If you'd like curtains add these now (see fig. 2) You will need 2 front doors (doors A to C) and 1 of each of the lower and upper windows per house front.

If you are adding dormer windows, and/or porches then also glue the glazing for these as well.

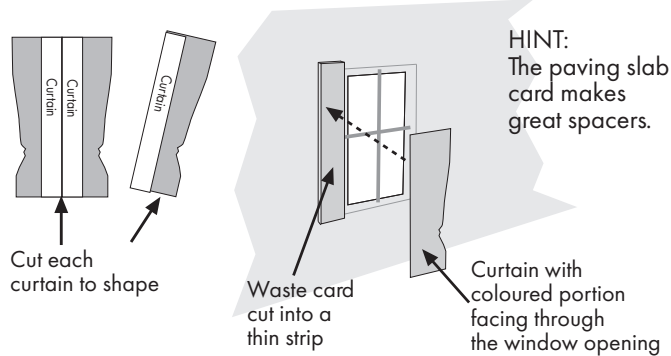
LEAVE THE BAY WINDOW GLAZING TO ONE SIDE (see fig.19)



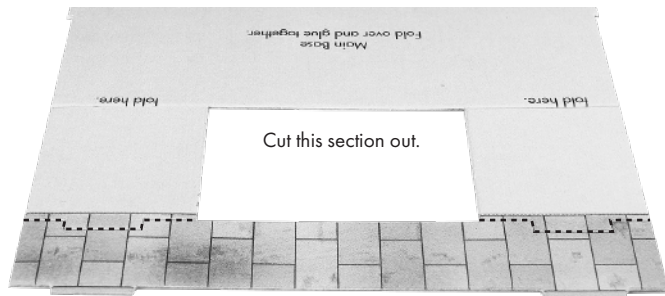
## Fig. 2. CURTAINS

After you have fitted the glazing, if you require curtains or blinds, now is the time to fit them

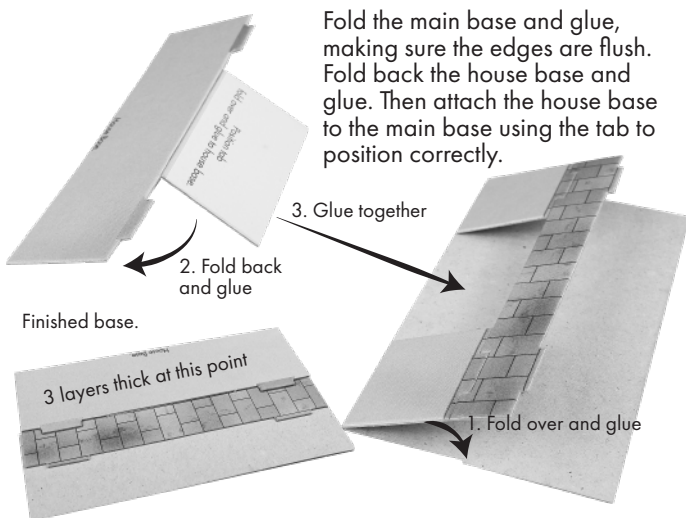
To fit curtains fix a small strip of waste card to each side of the window, then glue the curtain to the waste card so that it shows through the window (the waste card will space the curtain back from the window a little giving a greater effect of depth).



## Fig. 3. THE BASE

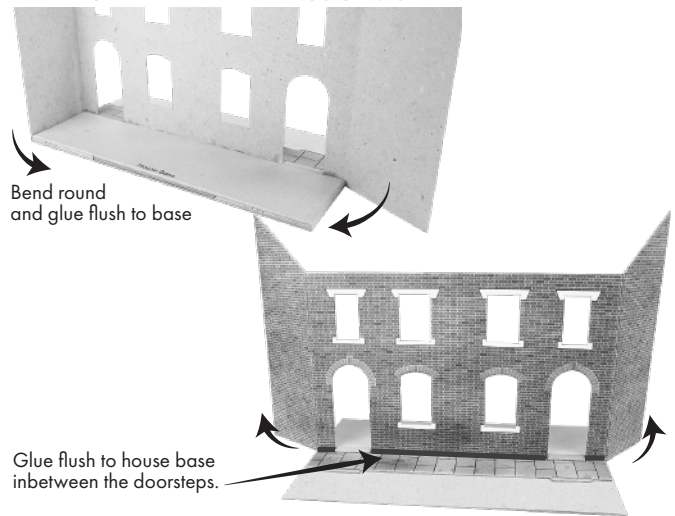


Before you fold and glue the base, if you'd like to have the terraces WITHOUT the front 'yard' and with the additional paving slabs you'll need to carefully cut along the score line indicated by the dotted line above. Then later on cut the rest of the base back to the pavement width required.



## Fig. 4. MAIN OUTER WALLS

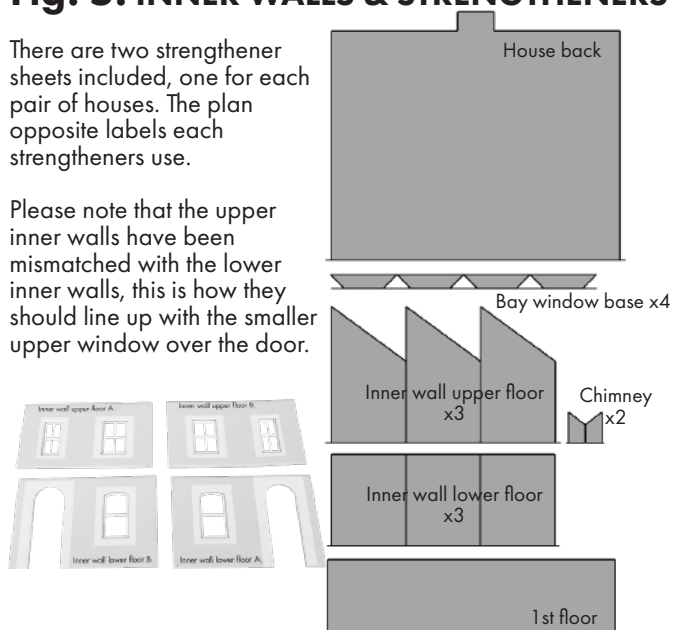
On a flat surface position the wall as shown. The front wall fits snugly around the doorstep, and the side walls around the base. Test the position first before applying glue.



## Fig. 5. INNER WALLS & STRENGTHENERS

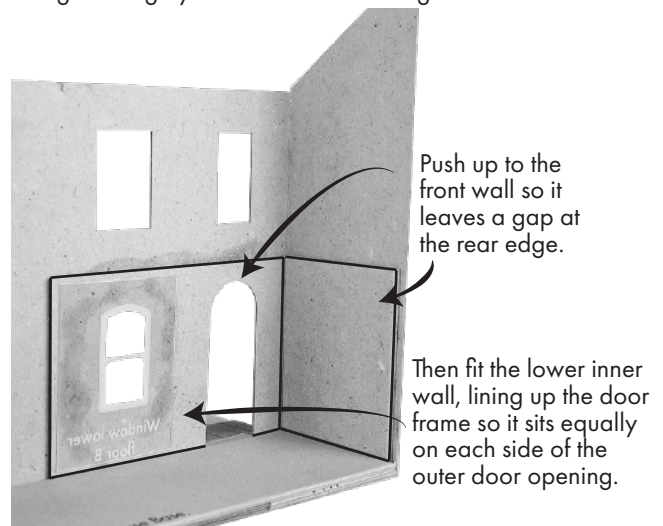
There are two strengthener sheets included, one for each pair of houses. The plan opposite labels each strengtheners use.

Please note that the upper inner walls have been mismatched with the lower inner walls, this is how they should line up with the smaller upper window over the door.



## Fig. 6. INNER WALL CONSTRUCTION

First glue the grey inner lower wall strengthener to the side wall.

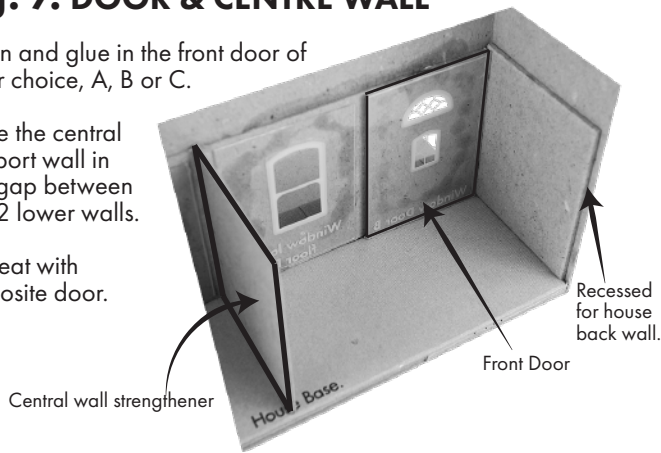


**Fig. 7. DOOR & CENTRE WALL**

Align and glue in the front door of your choice, A, B or C.

Glue the central support wall in the gap between the 2 lower walls.

Repeat with opposite door.

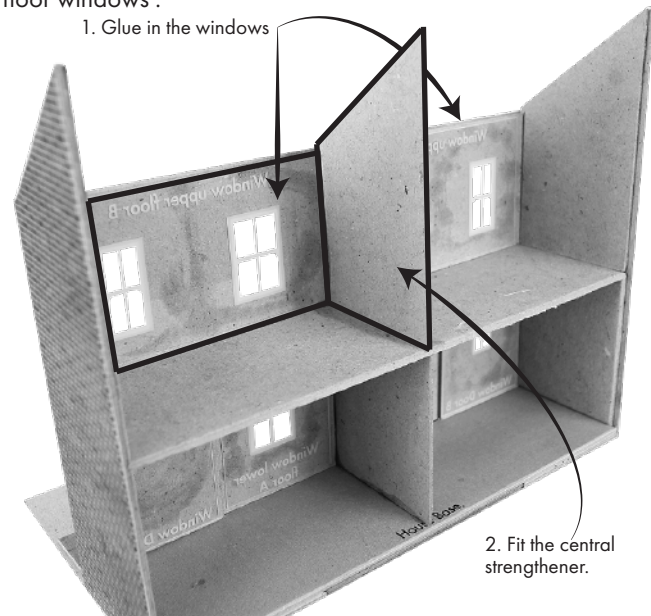


**Fig. 9. 1st FLOOR WINDOWS**

Align and glue in place the upper windows, keeping the small windows above the front doors.

Then fix the central strengthener into the gap between upper floor windows .

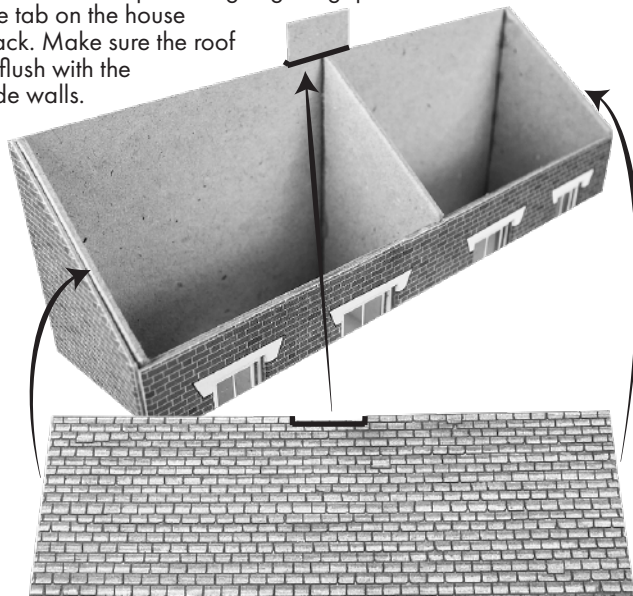
1. Glue in the windows



2. Fit the central strengthener.

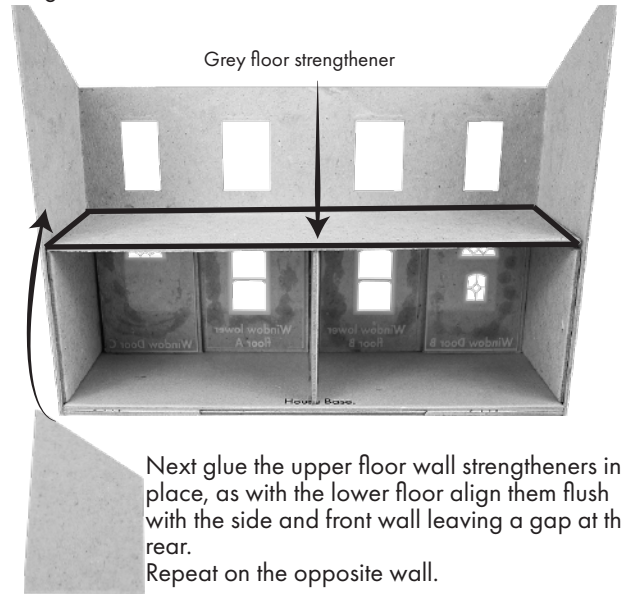
**Fig. 11. ROOF**

Fit the roof into place aligning the gap on the roof section with the tab on the house back. Make sure the roof is flush with the side walls.



**Fig. 8. 1st FLOOR**

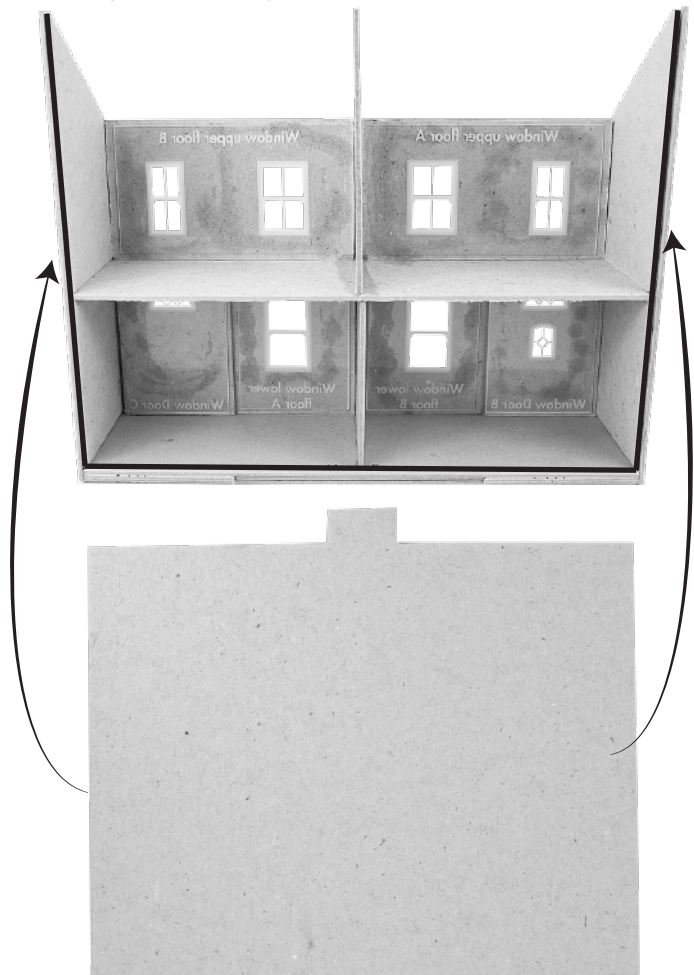
Slot in and glue in place the grey floor strengthener it fits snugly on top of the lower floor windows and the lower wall strengtheners.



Next glue the upper floor wall strengtheners in place, as with the lower floor align them flush with the side and front wall leaving a gap at the rear. Repeat on the opposite wall.

**Fig. 10. HOUSE BACK**

Position and fit into place the grey house back. The back fits on top of the base and flush against the inner strengtheners, with the chimney back in the top centre.

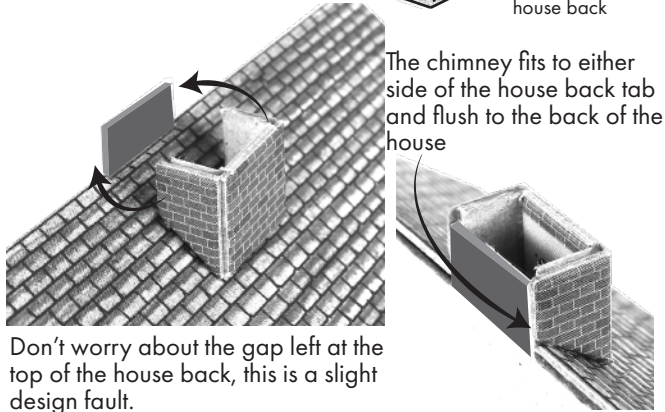
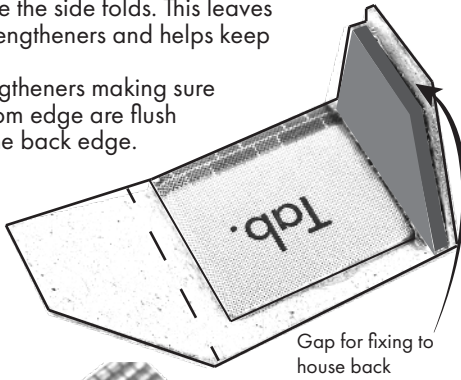




## Fig. 12. CHIMNEY STACK

Fold over the tab and glue in place, leaving a small gap either side before the side folds. This leaves space for the side strengtheners and helps keep it's shape.

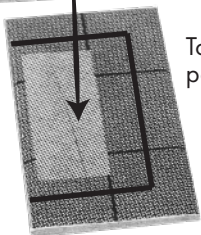
Glue in the side strengtheners making sure that the top and bottom edge are flush and a gap is left at the back edge.



Don't worry about the gap left at the top of the house back, this is a slight design fault.



Glue the small chimney top to the larger chimney top. Then onto the chimney stack. The light grey rectangle reminds you to glue the top stack flush to the rear.

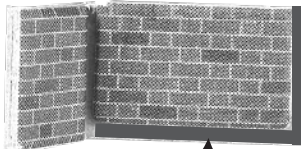


To add chimney pots see fig.21



## Fig. 15. CORNER WALLS

For the end house, fit a corner wall. The corner wall has a small gap on one side that fits snugly against the corner wall and the base. Test the fit before setting in place.



Fits flush against the wall and edge of base

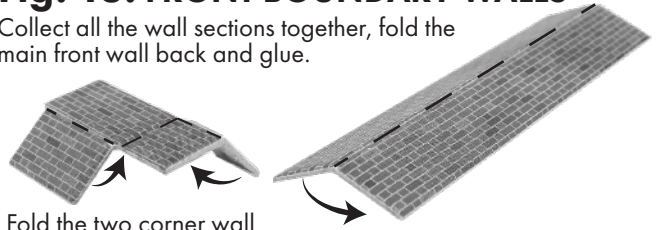


Glue in place the top stones, once set trim the excess away from the gateway. Then, with small points of glue, set in place a gate of your choice.

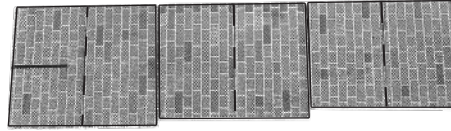


## Fig. 13. FRONT BOUNDARY WALLS

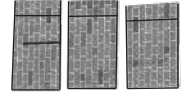
Collect all the wall sections together, fold the main front wall back and glue.



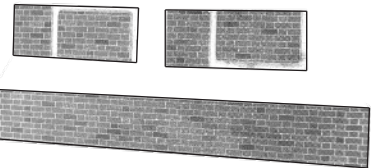
Fold the two corner wall tabs back and glue



Arrange the small wall sections together, note the different sizes. Fold back and glue like the main wall

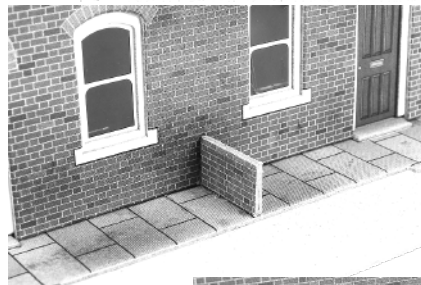


Place the wall sections back into the builders yard for later use.



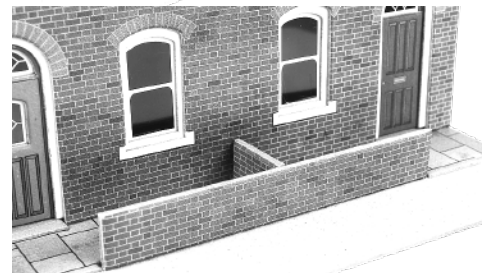
## Fig. 14. MAIN FRONT WALL

Before fixing the walls, use the main wall top stone as a guide to mark out the position for the centre wall. The top stone piece should fit between the 2 steps.

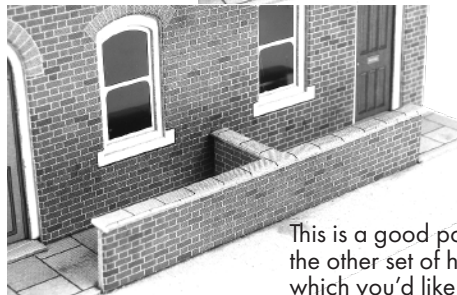


Then glue in place the centre wall section, this is the shortest of the wall sections.

Followed by the main wall section, this fits tight against the centre wall and inbetween the steps.



Then add the top stones.



This is a good point to assemble the other set of houses and decide which you'd like to be the end house.

Fig. 16. ADJOINING WALL

Once you've built the second house block, there is a wall section which joins the two sections together.

Start by carefully aligning and glueing the 2 houses together.



The end join wall (the smaller of the 2 remaining wall sections) slots into the gap inbetween the 2 paving sections and the wall gap.

The street facing wall (the wall section with the small black line) then slots into the gap inbetween the steps, with the black line facing the end join wall.

Add the T-shaped topstones and gates like before.

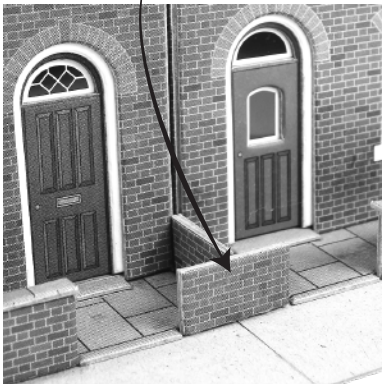
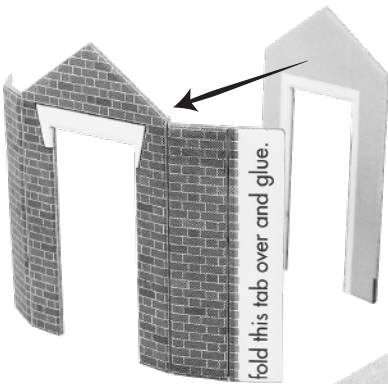


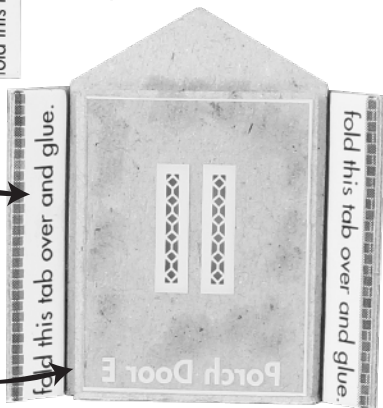
Fig. 17. PORCH DOOR



Line up and glue in place the porch inner with the main porch.

Then fold over the side tabs and glue to make side walls double thick.

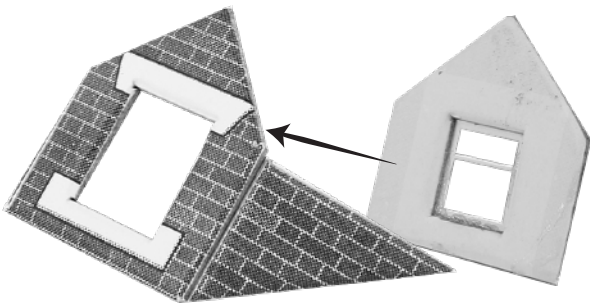
Add the porch door next, note: there should be a gap between the side tabs and the door, allowing the sides to fold flush.



Line up the porch with the gate and glue in place, then add the porch roof section.

Fig. 18. GABLE DORMER

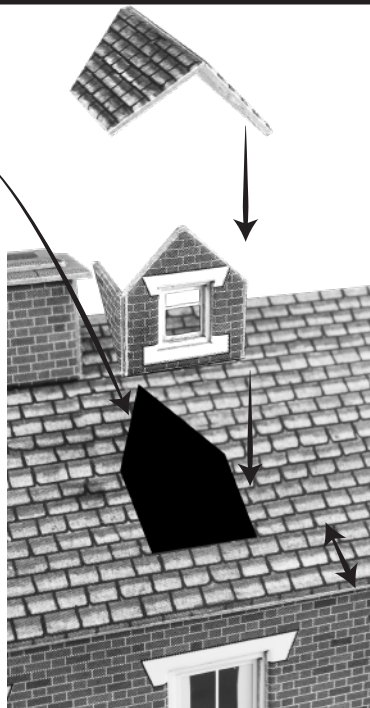
Start by fixing the inner dormer (with window) to the dormer window frame.



Use the black dormer mask (located on page 3 of this instruction sheet) as a guide to glue the dormer into shape.

Then glue the dormer to the building roof roughly 9mm from the edge of the roof.

Then glue the dormer roof into place.

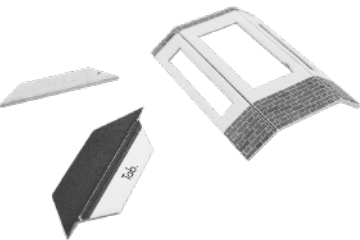


9mm

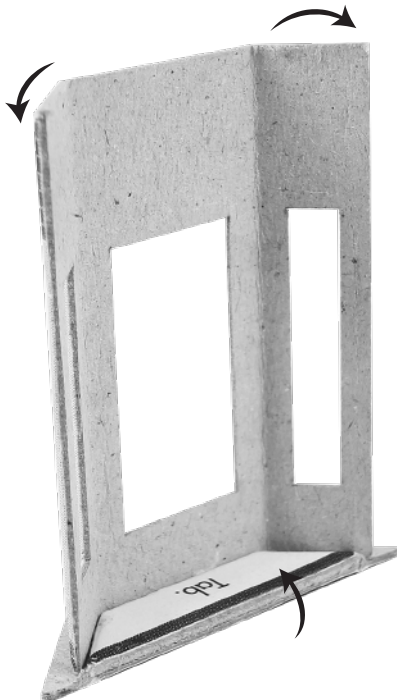


**Fig. 19. BAY WINDOWS**

Gather the following parts from your builder's yard, Bay window, bay roof and the grey board spacer.



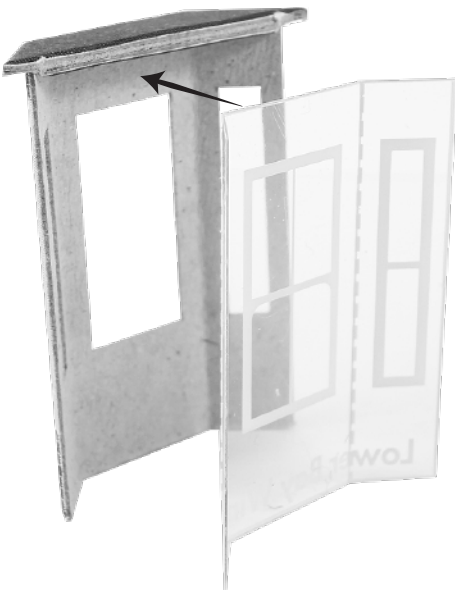
Next carefully score the bay window glazing along the dotted lines. Then gently fold the ends back about 45 degrees



Gently fold back the corner pieces of the bay window.

Fold the bay window roof tab back and glue in place.

Then glue the bay window frame around the roof tab.

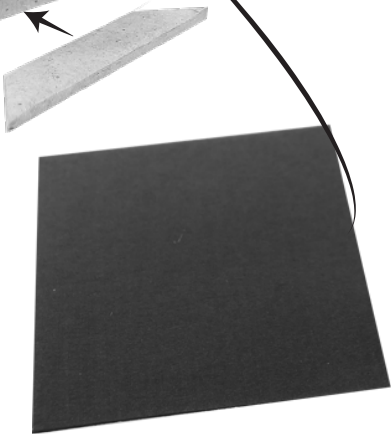


Flip the bay window over and with small points of glue attach the glazing into place. Note: check the window alignment before glueing into place.



Next glue the grey spacer into place at the base of the bay window

Then fix the black bay window mask, trimming to size.

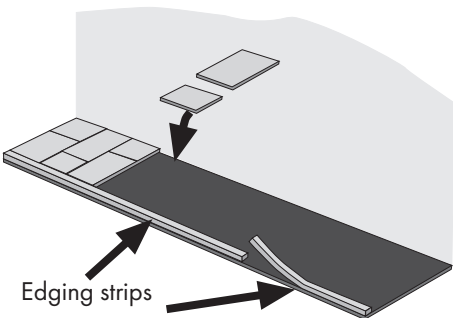


Position the bay window and glue into place.

If required build the upper bay window the same way and glue on top of the lower bay window.

Fig. 20. PAVING

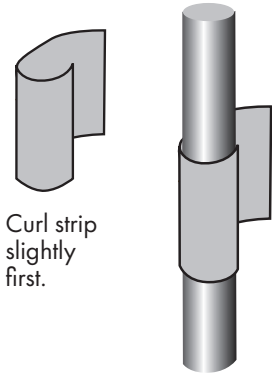
There is a sheet of self adhesive paving slabs in this kit. Peel off the individual slabs from the backing sheet and stick them in place on the brown base area in front of the houses. Start by attaching the thin edging strips, flush along the front edge of the base. Then lay the flags as shown - one full and one half flag on each row. To cover the whole width in front of the houses should take 31 rows depending on how tightly you lay them. You may need to trim some slabs down to make them fit. NOTE: It is recommended that you place tiny spots of glue under edging strips and slabs for a permanent adhesion.



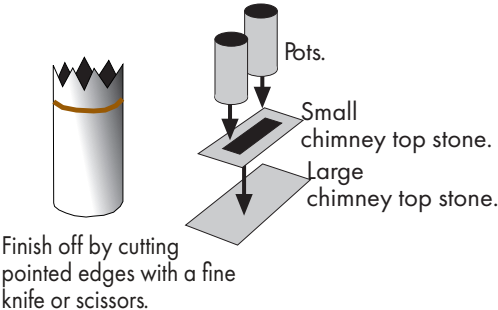
The paving slabs match with our paving pack code no PO210

Fig. 21. CHIMNEY POTS

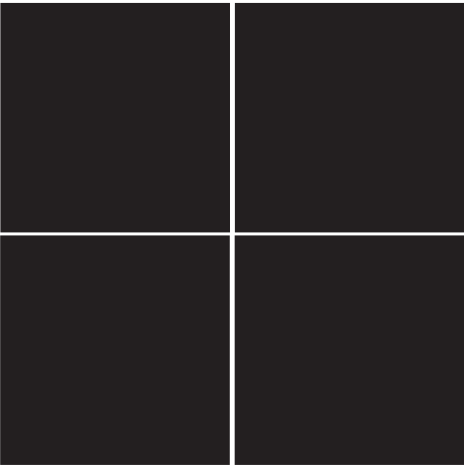
Cut into strips then roll tightly around a nail or screw (apx. 4mm dia.) and fix the end with a tiny spot of glue.



Roll up tight then unroll the end enough to smear with a little glue then roll back up and hold tight until fast.



PLEASE NOTE - once you have perfected the art of rolling your own chimney pots you will soon realise that they are extremely realistic. Much better than anything made from plastic or white metal. So please be patient & keep trying, the chimney pots make all the difference.



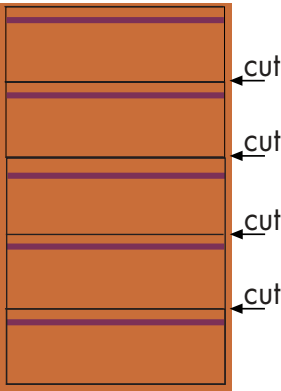
Black masks for upper bay windows (fig. 19)

Black masks for gable dormers (fig.18)



Black masks for lower bay windows (fig. 19)

Chimney Pots (fig.21)



## Fig. 22. FINISHING TOUCHES

Use a strip of the ridge tiles to finish the roof sections of the gable dormers and porch, just cut a strip to the required length and fold along the centre score line, then fit to the roof section along the ridge.

Use a strip of the brick work from Sheet B to cover the gap between the terrace houses.

If you'd like to paint the card edges and fold line of the buildings use a fine brush and water colour paints, test the colour of a bit of waste card before applying to the model.



Cut strips of spare brick to cover the joint between the houses.

